



Proposed depot for Castlemaine Road

☆ The stretch of Castlemaine-Maldon Road heading into Castlemaine. Butchers Road and the proposed depot site are on the right hand-side where the hill begins to decline.

An unprecedented rescinding of a vote has taken place at last month’s Mount Alexander Shire Council meeting.
 In October 2021 council voted four to three against a proposed contractor’s depot on Butchers Road Muckleford (when driving to Castlemaine, Butchers Road is on the right hand side as you descend the hill).
 In what is believed to be a first for Mount Alexander Shire Council, Councillor Henderson rescinded her vote on the Depot, stating she had not been made aware of a revised traffic engineering report, particularly in relation to addressing the issue regarding sight distance.
 Councillor Henderson told the *Tarrangower Times*, “It was not a pleasant decision to make.”
 Councillor Stephen Gardner told the *Times* that he is against the proposal.

“This is the first time a motion has been rescinded and I think that’s a dangerous thing to start doing.”
The Proposal
 The applicants for the proposed Contractor’s Depot own a large number of earth moving trucks and equipment in Castlemaine.
 The intention is to use the land for servicing and washing of trucks and equipment, with 10 trucks and six trailers stored on site when not in use. The operating hours of Monday-Friday would be between 7am-6pm, Saturday 7am-1pm and closed Sundays.
 According to the amended Traffic Engineering Report, the existing Castlemaine-Maldon/Butchers Road intersection has sight distances slightly below requirements. A Safe Intersection Sight Distance (SISD) for cars doing 100 kilometres an hour, assuming a two-second reaction time, is 248 metres.

Analysis of existing conditions shows the SISD is approximately 220 metres, 28 metres less than guidelines.
 Proposed works involve removal of roadside vegetation and widening of the road to ensure site lines and widening the sealed section of road.
 Consulting Arborist, Landscape Designer, and local resident Susan Luke told the *Tarrangower Times* that deep excavation along the north-boundary of the property has caused around 30 native roadside trees to decline in health. Large tree roots have been removed from the south-side of these trees and they now stand in a narrow, elevated strip of dry soil above the Castlemaine-Maldon Road. Risks to road users from dead limb and tree failure will increase over time as trees decline further.
 In April 2020, one of these large trees fell across the Castlemaine-Maldon Road shortly after the Walmer Fire Brigade submitted an objection letter to Council identifying, among
Continued on page 3

Maldon

“Serving your community”

Main Street Maldon
Ph: 5475 2458

IGA

plus LIQUOR

wish their many clients and good friends a very Happy Christmas and a wonderful New Year.

REGULAR HOURS
GROCERIES OPEN

Mon-Sat: 7.30am - 7pm
Sun: 9am-5.30pm

LIQUOR OPEN

Mon-Thurs: 9am - 7pm
Fri-Sat: 9am - 7.30pm
Sun: 10am-5.30pm

Groceries

Christmas Day 9am - 4pm
Boxing Day 9am - 5.30pm
Monday 27 & Tuesday 28
9am - 5.30pm
New Year's Day 9am - 5.30pm

Liquor

Closed Christmas Day
Boxing Day 10am - 5.30pm
27 & 28 10am - 5.30pm
New Year's Day
10am - 5.30pm



Community Diary

If you have a community event that you would like publicised in this Community Diary, please email: karen@tarrangowertimes.com.au or send details to us at PO Box 18 Maldon 3463, or drop a note into the letterbox in the office door to have it listed.

This is a free community service.
It is a good idea to advertise closer to the event.

EVERY DAY EXCEPT MONDAY
LIONS CLUB OP SHOP , 10am to 2pm. Enq: Jenny 0407 158 833.
FIRST SUNDAY OF THE MONTH
CASTLEMAINE FARMERS MARKET , 9am to 1pm at the IGA carpark in Forest Street. Enq: www.castlemainefarmersmarket.org or 0490 366 243. MALDON PONY CLUB RALLY (except January) at the Maldon Campdraft grounds at 9.30am for gear checks for a 10am kick off. Enq: Kira Chalmers 0407 140 580.
EVERY SUNDAY
MALDON MUSEUM , Shire Gardens, 11.30am – 2pm. Admission \$2.50 adults, children free.
EVERY SUNDAY FORTNIGHT
MALDON PÉTANQUE CLUB games every second Sunday at St. Brigid's at 1.30 for a 2pm start. Enq: Sandy Noble 0429 006 130. Andrew Leckie 5400 1054. SOCIAL PÉTANQUE is played on the Penny School pistes every second Sunday, alternating with MPC, at 1.45 for a 2pm start, unless rain is bucketing down, or it is over 30°. Enq: 0459 093 452.
SECOND SUNDAY OF THE MONTH
ATHENAUM LIBRARY , 97 High Street, Maldon. Open 10am-1pm includes book sales. Tina Fratta 0437 094 469. MALDON MARKET : Hand Made, Home Grown, 9am – 1.30pm. Bill Woodfull Recreation Reserve. THE MALDON VINTAGE MACHINERY & MUSEUM is a haven for machinery enthusiast's before and after the industrial revolution, but with more. Open 10am-4pm. Entry free - donations welcome. More info: Peter 0408 146 537.
LAST SUNDAY OF THE MONTH
CASTLEMAINE REPAIR CAFE , 10am - 1pm at Castlemaine Community House ,30 Templeton St. Enter from back door. Bring along broken electrical, general sewing repairs and maybe a cuppa and weekend paper in case you have to wait a while. No kitchen because of COVID. Gold coin donation. Learn to repair.
EVERY MONDAY
LAP SWIMMING , Maldon Swimming Pool, 6pm - 7pm. OCCASIONAL CHILDCARE , Maldon Neighbourhood Centre 9.30am-2.30pm. Enq. 5475 2093 or info@maldonncc.org.au . ATHENAEUM LIBRARY , High Street, Maldon. 2-4pm. Suzette Phillips 0429 776 893. MALDON BRIDGE CLUB at the Maldon Hotel, 1.15pm - 4.30pm. New players welcome including solo players. Enq: Danny Murphy 0430 733 782. MALDON WALKING GROUP , starting at 9.30am for a gentle walk. Start at Maldon Neighbourhood Centre. No booking required. Cancelled if heavy rain or a Code Red Day. Enq: 5479 1000.

Tarrangower Times

Your Paper, Your Stories, Your News!

Est 1858

Available from: Maldon Newsagency, Castlemaine Newsagency, Newstead Country Store and Baringhup General Store.

4/93 High Street (PO Box 18), Maldon Vic 3463.
Tel: (03) 5475 2256
Email: editor@tarrangowertimes.com.au
www.tarrangowertimes.com.au
www.facebook.com/TarrangowerTimes
www.instagram.com/tarrangower_times

Other contact details:

Jade Jungwirth (Editor) 0408 594 246 or jade@tarrangowertimes.com.au
Karen Sloan (Design | Accounts) 0404 357 556 or karen@tarrangowertimes.com.au
Kerry Cain (Advertising) 0419 102 723 or kerry@tarrangowertimes.com.au

Guaranteed Office Hours:

Mon: 9am - 11am, Tues: 9am -12pm, Wed: 9am - 1pm.

ADVERTISEMENT LODGEMENT TIMES:

- Classifieds - 12noon Tuesday.
- Casual Display - 12noon Tuesday.

CONTRIBUTED ARTICLES:

- Community and News 12noon Tuesday.
- Late notices such as Births and Deaths by 10.30am Wednesday.

The *Tarrangower Times* is a member of the Victorian Country Press Association. The *Times* is owned by Tarrangower Times Pty Ltd, edited by Jade Jungwirth and printed at Express Print, Morwell.

Copyright in this publication is held by Tarrangower Times Pty Ltd. Reproduction of any portion including advertisements and photographs without permission is not permitted and may constitute an offence. Copyright © 2021.

SOCIAL GOLF – 8.30am – 9 holes, free for members or \$10 green fees. Enq: maldongolf4u@gmail.com or Gay Reid 0413 013 766.
NORDIC POLE WALKING (during school terms), 9.30am at Castlemaine Botanical Gardens. Further info and bookings 5479 1000.

FIRST MONDAY OF THE MONTH
CRYPTIC CROSSWORD MORNINGS from 10am MNC Community garden.
SECOND MONDAY OF THE MONTH
THE MALDON GARDEN, FLORAL ART AND CRAFT CLUB , 2pm. Enqs: Carmel 0417 014 763.
THIRD MONDAY OF THE MONTH
CRYPTIC CROSSWORD MORNINGS from 10am MNC Community garden. THE MALDON GARDEN, FLORAL ART AND CRAFT CLUB , 2pm. Enqs: Carmel 0417 014 763.
EVERY TUESDAY
AQUA AEROBICS , Maldon Swimming Pool, 6pm. Cost \$9.50 (or \$6 with season pass). COMMUNITY TRANSPORT SERVICE . Book the day prior for your door-to-door service. Trips within and to Maldon & Castlemaine in the morning, fortnightly trips to Maryborough and Kangaroo Flat. Phone 5475 2093. \$3 one way, \$5 return. More info: www.maldonncc.org.au/community-bus . MAH JONG for seniors 10am-1pm at Maldon Community Centre. Beginners welcome. Enquiries: Kerry 0407 738 855. MALDON BOWLING CLUB , at 10am, as long as COVID restrictions allow.

MALDON BRISK WALKING GROUP, 7.30am meet at Maldon Neighbourhood Centre.
MALDON SOCIAL TABLE TENNIS, 1.30pm-3.30pm, Maldon Community Centre. Cost \$10 subscription to Maldon Seniors, \$2 donation on the day. Enq. Anne 0425 859 662.
MALDON CROQUET CLUB, 9.30am. New members welcome. Enq. Damien Kennedy 0428 130 764.
YOGA AND RELAXATION, Maldon Neighbourhood Centre Hall. Evenings 6-7.30pm. Come and try, first class free. Enq: Andrea 0427 772 878.

FIRST WEDNESDAY OF THE MONTH
NUGGETTY LAND PROTECTION GROUP meeting. For further info contact Christine Fitzgerald – ckfzt5@bigpond.com – 0419 347 408.
EVERY WEDNESDAY
ATHENAEUM LIBRARY , High Street, Maldon. 2-4pm. Enqs Suzette Phillips 0429 776 893. CANASTA for seniors 10am at Maldon Community Centre. Beginners welcome. Enquiries: Lyn 0409 566 551. COMMUNITY LUNCH (no lockdowns) 12 noon, Maldon Community Centre. Delicious two-course lunch during school terms. All welcome. \$5. Enq: 5475 2093 OR COMMUNITY PANTRY (during lockdowns) Delicious home-delivered meals for a \$5 donation. Order info@maldonncc.org.au or 5475 2093. EASY STEPS TO FITNESS AEROBICS , 9am - 10am Maldon Neighbourhood Centre, beginners welcome. \$10 concession, \$15 full. Enq: Sean 0419 210 043. HATHA YOGA WITH WENDY , 5 – 6.30pm at Maldon Neighbourhood Centre.

LAP SWIMMING, Maldon Swimming Pool, 6pm - 7pm.
MALDON MEN'S SHED, 10am to 4pm at rear of Vintage Machinery Museum (accessed from Phoenix Street). All welcome. Contact Barry Murfett 0403 352 753. (Note: Closed on days of Total Fire Ban or over 38°).
MALDON MUSEUM, Shire Gardens, 11.30am - 2pm. Admission \$2.50 adults, children free.
NORDIC POLE WALKING (during school terms), 5.30pm in Maldon. Further info and bookings 5479 1000.
THE MALDON VINTAGE MACHINERY & MUSEUM is a haven for machinery enthusiast's before and after the industrial revolution, but with more. Open 11am-3pm. Entry free - donations welcome. More info: Peter 0408 146 537.
YOUNG AT HEART PLAYGROUP, Maldon Neighbourhood Centre 10-11.30am. Enq. 5475 2093 or info@maldonncc.org.au.

EVERY WEDNESDAY FORTNIGHT
ART & CRAFT GROUP , 1.30pm – 4pm at Maldon Neighbourhood Centre.
EVERY FOURTH WEDNESDAY
MALDON CEMETERY FRIENDS WORKING BEE , 9.30am - 11.30am. Please come out and help get our historic cemetery clean, weed free and blooming! Our cemetery grounds and buildings need a little care and attention from some willing helpers on a regular basis. Training, equipment and morning tea provided. BYO Hat, sunscreen, insect repellent and especially gardening gloves.
EVERY THURSDAY
AQUA AEROBICS , Maldon Swimming Pool, 6pm. Cost \$9.50 (or \$6 with season pass).

TAI CHI EXERCISE GROUP (CHIRP), 10.30-11.30am at Maldon Neighbourhood Centre. Contact Jenny 0417 475 270 to register.
MALDON BOWLS CLUB, Bowls practice anytime Thursday until dark.
MALDON BRIDGE CLUB, 12.45pm to 4.30pm at the Maldon Hotel. New players welcome including solo players. Enq: Danny Murphy 0430 733 782.
MALDON CROQUET CLUB, 9.30am. New members welcome. Enq. Damien Kennedy 0428 130 764.
MALDON CHESS CLUB, 10.30am. Do you play? Come along. Do you want to learn? Come along. For enquiries contact John 0438 012 076.
NORDIC POLE WALKING (during school terms), 9.30am at Castlemaine Botanical Gardens. Further info and bookings 5479 1000.
OASIS KID'S CLUB, 3.20pm-4.45pm Maldon Baptist Hall, Edward Street. All primary aged children welcome. Free. Enq Gavin & Julie 5475 2338 or 0458 084 728.

SECOND THURSDAY OF EVERY MONTH
FREEMASONS MALDON meet at 7.30pm. Enq: Peter 5472 2202.
THIRD THURSDAY OF EVERY MONTH 2022
MALDON GOLDEN MOVIES will resume fantastic films from Thursday 17 February 2022, Subject to COVID regulations from then on. BYO smart phone and green Vax tick to scan QR code. Maldon Community Centre, Francis Street
EVERY FRIDAY
ATHENAEUM LIBRARY , High Street, Maldon. 2-4pm. Enqs Suzette Phillips 0429 776 893.

CHAIR YOGA, 11am – 12 noon at Maldon Neighbourhood Centre.
COMMUNITY PANTRY Delicious home-delivered meals. Order mtalexcommunitypantry@gmail.com or phone 0472 537 866.
COMMUNITY TRANSPORT SERVICE. Book the day prior for your door-to-door service. Trips within and to Maldon & Castlemaine in the morning, fortnightly trips to Maryborough and Kangaroo Flat. Phone 5475 2093. \$3 one way, \$5 return. More info: www.maldonncc.org.au/community-bus.
LAP SWIMMING, Maldon Swimming Pool, 6pm - 7pm.
MALDON MUSEUM HISTORY RESEARCH CENTRE, 10am - 1pm.
MALDON SOCIAL WALKING GROUP, Gentle walking. 9.30am meet at Maldon Neighbourhood Centre.
HATHA YOGA WITH WENDY, 9 – 10.30am at Maldon Neighbourhood Centre.
IMT - ARE WE BEING HEARD? Between 9am and 11am. You can listen to us on your phone you know. Listen on the TuneIn Radio App- MAINfm 94.9, or on your computer <http://mainfm.net>, OR SMS during the program on 0488 863 186. Please SIGN Your SMS.
SOCIAL GOLF – 8.30am – 9 holes, free for members or \$10 green fees. Enq: maldongolf4u@gmail.com or Gay Reid 0413 013 766.

SECOND FRIDAY OF EVERY MONTH
MALDON RSL SUB-BRANCH Monthly meeting in the Maldon RSL Hall behind the Athenaeum Library at 3pm. All Service and ex Service members are welcome to attend. No meeting in January.
LAST FRIDAY OF EVERY MONTH
MAREE EDWARDS LISTENING POSTS are postponed until further notice. My office is still available for assistance, please contact us on 5410 2444 or maree. edwards@parliament.vic.gov.au .
EVERY SATURDAY
ATHENAEUM LIBRARY , High Street, Maldon. 9.30am - noon. Enqs Suzette Phillips 0429 776 893.

MALDON MEN'S SHED, from 9am to 12pm at rear of Vintage Machinery Museum (accessed from Phoenix Street). All welcome. Contact Barry Murfett 0403 352 753. (Note: Closed on days of Total Fire Ban or over 38°).
MALDON CROQUET CLUB, 9.30am. New members welcome. Enq. Damien Kennedy 0428 130 764.
THE MALDON VINTAGE MACHINERY & MUSEUM is a haven for machinery enthusiast's before and after the industrial revolution, but with more. Open 10am-4pm. Entry free - donations welcome. More info: Peter 0408 146 537.

SATURDAY 18 DECEMBER
MALDON BRASS BAND at Maldon Hospital 2pm. CAROLS BY CANDLELIGHT , Bill Woodfull Reserve at 7pm. Be early to register attendance, gates open 6pm. Featuring Maldon Brass Band and local artists, Lions Club raffle and visit from Santa. BBQ tea available from the Maldon Football Netball Club.
TUESDAY 21 DECEMBER
MALDON BRASS BAND , Carols around town 6.45-7pm til late.



Bendigo Health Psychiatric Services Regional Triage
24 hour emergency –

1300 363 788

EMERGENCY COUNSELLING SERVICES

Kids Helpline: 1800 55 1800
Lifeline (24 hours): 13 11 14
Mensline Australia: 1300 78 99 78
Parentline: 13 22 89
Suicide Helpline: 1300 651 251
Beyondblue: 1300 22 4636

A black and white photograph of a paved road winding through a wooded area. The road has a white line down the center and is flanked by trees and bushes. A small sign is visible on the left side of the road.

Letter to the Editor



STEVE BARTY GAS



licensed drainer no: 39620

licensed drainer no: 39620

19 Main St. Ph. 5475 2271

Modern mining in Maldon: Porcupine Flat Mill



☆ The trucks deposit the ore into the plate feeder, which is then sent through the jaw crusher and onto the radial stacker.

AS you drive towards Bendigo, past Porcupine Village and the dredge, you will see a sign on the left hand side of the road; ‘Octagonal Gold Processing Plant’. This facility, referred to as “the Mill,” is still operational and currently processing ore from Kaiser Reef A1 Gold Mine, located 23 kilometres from Jamieson.

The processing operation at Maldon can be best described by the generic term ‘Carbon

In Leach’. All gold recovered is extracted by cyanide leaching. In order to leach the contained gold satisfactorily, the ore is reduced in size in two stages. The first stage involves crushing to less than 100 millimetres, followed by grinding to less than 100 microns, about the thickness of a sheet of paper

Once gold has been leached, the tailings (remains of the ore), a grey sludgy substance, are then placed in large,



☆ Tailings (remains of the ore) in a large purpose built dam on site.

highly engineered dams on site to dry.

Once the dams are full, soil is placed on top, and a process of revegetation begins. All water used in the process is collected in the tailings dam and recycled back through the mill. While being quite toxic to humans, the cyanide handling on site has very strict controls to ensure there is no risk to humans, animals or the environment.

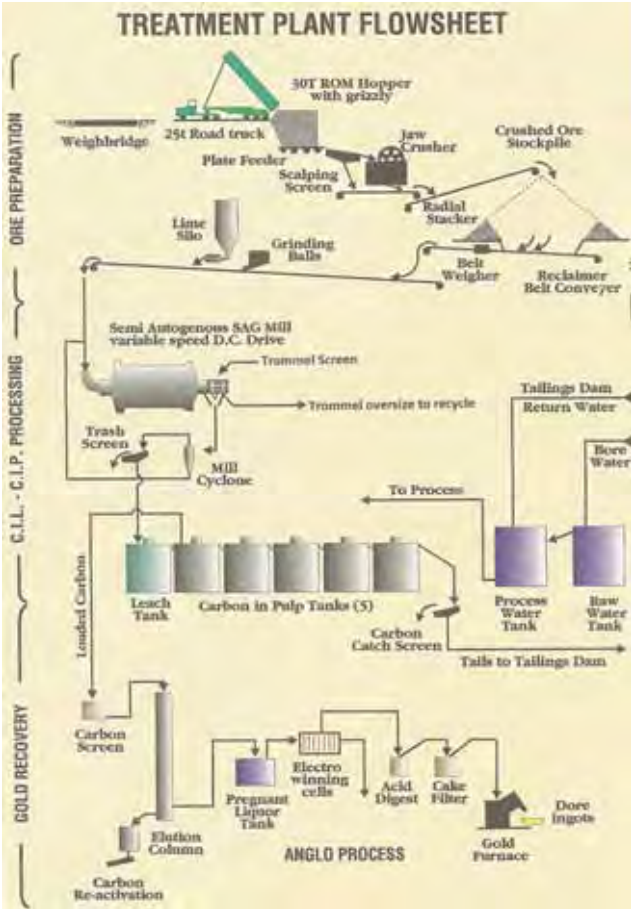
The long strip of land on Bendigo-Maldon Road, between Porcupine Village and the Mill, is a previous

tailings dam site, which has been regenerated by previous mining companies. The land on the other side of the Mill, on the left hand side of the road towards Bendigo, is being utilised by Kaiser Reef for current tailings dams.

Kathy Whiteman, Kaiser Reef Health, Safety, Environment and Communities Coordinator, told the *Tarrangower Times* that the Mill has an environmental review committee, with community representatives, that meet quarterly to discuss issues



☆ This full tailings dam sits beside Bendigo-Maldon Road.



☆ This flow sheet demonstrates the complex processes used at the Mill.


regarding effects of ground water, dust tests etc.

“We have also been working with MULGA (Maldon Urban Landcare Group) on another mining site to assist with weed management,” said Kathy, who has worked at the Mill since 2014. “And we provide water to the Nuggetty Water Group..”

The gold processing plant was originally commissioned and designed by E L Bateman

and Co. and was constructed in late 1987 by Triad Minerals to process low grade open pit gold ore from the nearby Union Hill deposit.


Subsequent milling campaigns included underground sulphide ore from the Eaglehawk and Linscotts reefs in 1996-97 (Alliance Resources Limited) and from the Alliance South Shoot in 2014 (Octagonal Resources Pty Ltd).



Compassion, Respect & Understanding

Prearranged & Prepaid Funerals available.

Peter Thompson and family of **Thompson family Funerals** Proudly serving the people of Castlemaine and district since 1950
~ The family that care ~



Queer and Now on MAINfm

SHERENE Clow, producer of *Queer and Now* on MAINfm, is excited to be receiving a \$3000 Volunteer Grant to assist in training 10 new presenters for the program.

“It’s a great way to enrich diversity across MAINfm’s programming, giving LGBTQI+ presenters the opportunity to work across a range of programs, including *Queer and Now*.”

Station Manager Stephanie Riddle is also grateful to have received \$5390 in funding through the Stronger Communities Program. This funding has allowed the station to purchase a new transmitter and receiver, which will be used by the station for the next decade.

“This equipment is the beating heart of the station,” said Stephanie. “This will allow us to repair the old equipment so that we can use it for a back up if needed.”

Federal Member for Bendigo Lisa Chesters was present at 94.9 MAINfm to officially announce their success in receiving the two Federal Government grants.

“The transmission equipment using money received through the Stronger Communities Program is vital to making sure that MainFM is able to continue to broadcast across the region,” said Ms Chesters.

“With close to 150 volunteers and 70 shows a week, it is such an important broadcaster, that champions inclusivity and diversity and is a true community radio station.”



Australian Government

OFFICIAL MEDICAL ADVICE

Getting vaccinated against COVID-19 is easy at one of more than 10,000 locations in Australia.

Book now australia.gov.au

Authorised by the Australian Government, Canberra.

ELECTRICAL & SOLAR!

Air conditioner giveaway



☆ Image is not a true representation of the air conditioning unit - illustrative purposes only.

THANKS to everyone for entering the air conditioning competition. We will announce the lucky winner in next week's *Tarrangower Times*.

A massive thank you to Pat Cummins from EcoTech Electric and Solar for your generous donation of an air conditioner and installation, at what can be a very difficult time of year for people, not to mention hot!

Unfortunately the entry below was not eligible for the competition (due to already owning an air conditioner) but we loved his entry so much we thought we'd share it with you:

**My bedroom needs to cool
And EcoTech have just the tool
Thanks, Pat Cummins you're a star
There is no other sparky on a par.**

*Stuart Garrow
Maldon*



☆ Head down to the Maldon Pool and check out the new furniture!

ESCAPE the heat this summer by visiting the Maldon Pool where you can now relax in one of the new banana lounges or visit with friends at the new table and chairs.

After receiving a grant of \$3000 from the Maldon and District Community Bank this year, the pool committee decided it was time to replace the tired old plastic tables and chairs, so make sure you head down and check them out.

"Maldon's swimming pool is a really pleasant space to relax in the summer-time. We're even luckier this year to have

our pool operating as normal. Please come and enjoy the pool, meet the fantastic staff and show how grateful we are to them," said committee member Lee Mead.

Committee Member Anne Hayes told the *Tarrangower Times* that the community bank have been amazing over the years, providing funds for the pool cover and providing heating for the showers.

"We're rapt with the new furniture," said Anne. "I had mothers coming up to me yesterday saying how great they were.



☆ The new sun lounges look very inviting... perhaps with a good book?

"The committee is keen to get new members so if anyone is interested they can contact me on 0429 943 123."

The pool is open every day the temperature is above 23 degrees. School holiday hours are 1pm-6pm with water aerobics Tuesdays and

Thursdays and lap swimming Monday, Wednesday and Friday 6pm-7pm.

The swimming pool committee will be fundraising at the January 9 Maldon Market, so if you can assist on that day on the gate or BBQ please let us know.



EcoTech

ELECTRICAL & SOLAR

- Home Automation
- New and Heritage homes
- Solar Systems
- Home Safety checks
- Security Cameras
- Heating and Cooling

**Phone Pat Cummins
0400 066 932**



OPEN FOR INSPECTION: SATURDAY 12:30PM-1:30PM



Campbells Creek
3 Scott Court \$765,000

QUIET ASPECT WITH TOWN CONVENIENCE & COUNTRY VIEWS 3 2 2

Set on a massive 2047m2 with no rear neighbor and in a quiet cul-de-sac this private sanctuary in the popular Campbells Creek has just come on market. With a drive through backyard featuring sheds, an aviary plus lots of space and perimeter plantings, the pet proof area is ideally suited to add a large shed, pool and a veggie/orchard. The north facing living areas of the residence have direct access to a 3metre verandah along the breadth of the home and a large patio for alfresco entertaining. The brick home has 3 bedrooms with robes, the main with walk-in robe, 3 piece ensuite, ceiling fan and reverse cycle air conditioning. There is a well designed open planned kitchen-dining-living space plus a separate lounge. The kitchen enjoys bay window northern views to the outdoors, dishwasher, gas cooking and plenty of prep and storage space.

OPEN FOR INSPECTION: SATURDAY 2:30PM-3:00PM



Metcalfe
14 Wilsons Road \$700,000 - \$730,000

RIVER VIEWS AND WALKS IN METCALFE VILLAGE - COTTAGE, STUDIO & 1.2 ACRES (4,822m2) 3 2 4

Set on just over one acre (4822m2) of elevated and rolling river flats of the Coliban River it takes a gentle 60 metre stroll to be part of the flowing waters and mighty river red gums. Serenity is real here. The low maintenance property is just off the sealed Kyneton - Metcalfe Road with mains power, NBN, its own 4 tanks of water for garden and house, plenty of fruit trees, landscaped and tiered gardens with professional brick paved paths, large retaining boulders, its own dam, and uninterrupted private quiet views. The Tuscan theme finished cottage enjoys a lined and decked front verandah overlooking the dense planted garden beds and a three car port at the rear which doubles as a north facing alfresco. It features Hebel block under hard plastering, much double glazing, upgraded wall and ceiling insulation, recent paint work, security doors, cosy wood fire, reverse cycle heating and cooling and raked ceilings with exposed beams.



Happy Holidays

We will be taking time to relax with our families over Christmas.
Our offices will be closed 5pm 23rd December 2021 and reopening 9am 4th January 2022.

For urgent maintenance issues during this time please contact:

Narelle Waller
Ph: 0408 571 131
narelle@wallerrealty.com.au

For all sales enquiries during this time please contact:

Rob Waller
Ph: 0418 571 130
rob@wallerrealty.com.au

Wishing everyone a very Merry Christmas and safe and Happy New Year.



Rob Waller Director
0418 571 130



Narelle Waller Director
0408 571 131



Blasi Mulholland
Property Consultant 0417 311 733



Brett Tweed Sales
0417 564 697



Stuart Hassett
Property Manager 0417 737 660



Catrina Weiss
Asset Manager

A history of Strangways



☆ Authors Derek Reid, Joan Sartori and Ken James.

THIS new publication includes chapters on schools, churches, gold, those who served, gossip and more. There are a lot of stories,

photos and local colour.

The book is the result of three years research by co-authors, Ken James, Derek Reid and Joan Sartori.

Joan is a long-time Strangways resident and secretary of the Newstead Historical Society, Derek is the president of Maldon

Museum and Archives and the past president of Newstead Historical Society and Ken is a Melbourne based researcher with an interest in localities in the Castlemaine district as his great-great grand parents and children lived at Golden Point, Chewton.

Derek told the *Tarrangower Times* that he found writing the Strangways book to be an interesting project to work on as it was similar to so many small country communities of the region that sprang up due to the gold rush.

"It was also interesting to see how the community grew and developed while reading through the archives and newspaper articles," said Derek.

"In the early 1850s Strangways was a bigger township than Newstead, until they built the crossing

over the Loddon River at Newstead, to cater for the gold diggers travelling from the Castlemaine gold diggings across to the diggings at Maryborough and Avoca.

"COVID created a few problems with not always being able to get to the various libraries and archives to access the historical records needed for doing the research, and

most of the time the three of us involved with the writing were mostly communicating via emails and phone calls while doing the research and writing of the book."

The book is available to purchase from the Mount Alexander Shire Visitor Centres at Castlemaine and Maldon.

Free travel vouchers this festive season

Continued from page 3

Passengers on reserved V/Line services still need to book their travel so they can be issued a ticket free of charge.

On New Year's Eve, Victorians will be able to welcome in 2022 across the state, with all train, tram and bus services free from 6pm on 31 December until 6am on 1 January. The first V/Line train services departing Melbourne on each line will also be free, even if they leave after 6am on New Year's Day. Customers travelling during these free travel periods do not need to touch on or off with their myki.

A normal weekday public transport timetable will be in place between 6pm and midnight on New Year's Eve, with additional services after midnight.

From 1 January 2022, metropolitan public transport fares will increase by 2.3 per cent on average. After freezing fares last year,

the increase will add 20 cents to the daily Zone 1, Zone 2 and Zone 1+2 metropolitan fares.

The average regional fare increase across the network will be 1.1 per cent.

For regional Victorians, the cost of getting around town will remain unchanged, with the regional town bus fare remaining at \$2.40 for a two-hour fare or \$4.80 for a daily fare – for the seventh consecutive year.

"Victorians will no doubt be keen this festive season to celebrate their hard-won freedom, so we're making sure they have travel options to do just that," said Ben Carroll, Minister for Public Transport.

For information and to plan your journey on Christmas or New Year's Eve visit ptv.vic.gov.au.

During these difficult times...



We are still here to help you, 24 hours a day, every day



12 Campbell Street, Castlemaine
Ph 5470 5951 all hours
www.mafunerals.com.au



Grassfires move so quickly, it's impossible to outrun them.

This summer, significant pasture growth in paddocks and roadsides means that fast-moving grassfires will be a serious risk across Victoria. Rural grassfires can be just as dangerous as bushfires, and can actually spread even faster, travelling at speeds of up to 25km/h. If you live close to open paddocks or grasslands, you could be at risk and need to be prepared. On high-risk Fire Danger Rated days, the safest option is to leave early.

How well do you know fire?

Plan. Act. Survive. Go to vic.gov.au/knowfire

**Ballistics studies show
at least 1 in 4 birds hit in
duck shooting are not killed
outright but left to suffer
agonising injuries.**

**Isn't it time Victoria
banned the cruelty as
other states have done?**



**Recreational duck shooting is banned in NSW,
QLD, ACT and WA. To help ban it here, visit:**

www.regionalvictoriansOTDS.com

Photo by Eleanor Dilley

VR4687260

When it rains, it paws for CFA Oscar1 Brigade



A specialist CFA brigade has been called out to two incidents within a week, both involving the rescue of a dog from a mine shaft.

Bendigo-based Oscar1 Brigade helped rescue Bruno the Bull-Arab on Sunday 5 December after he'd fallen down a mine shaft at Castlemaine Diggings National Park.

Captain Daniel McMahon said it was quite unusual and surprising to receive another call less than six days later, this time to rescue Terry the Kelpie-cross from a mine shaft at Woodend.

"The owner said they were camping and the dog just went for a run, but as it was night and you can't see these mine shafts at the best of times, he just fell down the hole," said Captain McMahon.

"The Woodend team did a great job in securing the scene because one of the biggest risks at a job like this is the owners trying to communicate with their loved animal and ending up falling into the shaft as well.

"It was a 15-metre shaft but we thought it may have been a false floor, meaning there could have been another 10 or 20 metres below if the floor had collapsed.

"Terry was in surprisingly good nick though, with no injuries, so we hooked him up to the ropes and Woodend brigade helped pull him up.

"The owner was ecstatic when they were reunited."

Captain McMahon said it was great to have a good result from both incidents in Castlemaine Diggings National Park and Woodend.

"We hadn't been called out to a rescue in quite a while, so to have two similar jobs in a week was quite surprising.

"Rescuing a dog in a mine-shaft is a serious job, but for us it also doubles as real-world experience in case we are called to a community member in the same unfortunate situation.

"In both scenarios it's a multi-agency effort, there's crowd control required and there's a very concerned person pushing us to rescue their loved one."

Oscar1 Brigade trains for a variety of rescue situations including grain silos, tower rescues, and mines.

Steve's Wine pick

Kyneton Ridge Estate Sparkling Shiraz NV



Like most of the brands we carry, Kyneton Ridge Estate is a small family owned and operated vineyard and winery. The Kyneton Ridge Estate Sparkling Shiraz NV is a classic Victorian sparkling shiraz, crimson red in colour offering notes of raspberry, plum and cinnamon. The wine is beautifully balanced with subtle tannins.

Sparkling Shiraz is a uniquely Australian wine that originated in Victoria in the late 1800's and until relatively recently was referred to as Sparkling Burgundy. Sparkling Shiraz is bottled initially as shiraz on its first fermentation and the secondary fermentation, which is known as *méthode champenoise* takes place in the bottle.

Over many years Sparkling Shiraz has gained a reputation as a wine to be traditionally consumed at Christmas - usually over lunch – but for those in the know, a good sparkling red can be enjoyed at any time or occasion, either as an aperitif or with a good meal.

The Kyneton Ridge Estate Sparkling Shiraz is an ideal wine to accompany any celebration, so why not treat yourself to a bottle for this year's Christmas lunch!

CASTLEMAINE CENTRAL WINE STORE

DISCOVER VICTORIA HERE

Fine local and regional Victorian wine, cider and beer

Open Monday to Saturday from 10.30am

Proudly supporting Victorian winemakers since 2014

5470 6487

@castlecentralwines

36 Lyttleton Street Castlemaine

MALDON

IGA plus LIQUOR

GROCERIES OPEN

Mon-Sat: 7.30am - 7pm

Sun: 9am-5.30pm

LIQUOR OPEN

Mon-Thurs: 9am - 7pm

Fri-Sat: 9am - 7.30pm

Sun: 10am-5.30pm

SPECIALS

from Wednesday 15th Dec to Tuesday 21st Dec

Peters Original Ice Cream 4 Litres Selected Vars \$4.70

Carlton Dry 24 pack \$44ea

Australia Calypso Mangoes \$2.49ea

XXXX Gold 30 can Block \$44ea

11-17 Main Street Maldon.

Ph: 5475 2458

Know Your Local

Jen Storer



☆ Jen's artistic space in a gorgeous yellow shed in the back yard.

I have to confess I didn't know who Jen was when I went to interview her! Someone had recommended her for 'Know Your Local' as she was a local author, so off I went, none the wiser.

A little way into the interview I realised that Jen is an incredibly well-known children's author! In fact my daughter and I have read most of her books and love her work.

We met at Jen's beautiful home, where she and her partner have lived for the past three years. Her love of gardening and artwork is immediately apparent when you step inside. Some of Jen's own artwork hangs on the walls, but she has no interest in illustrating books.

"Illustrators bring the writer's work to another level. They see things you can't. I appreciate the depths of their knowledge and their techniques."

Jen has been a career author for 24 years with 23 books published, writing children's fantasy novels and the *Truly Tan* series.

Growing up in Horsham Jen found there were limited options, particularly as a woman, so she pursued a



career in nursing before going back to university when she was in her 30s to study literature and film.

"It was harder in the 60s and 70s, girls were told what to do and they had to go and get married.

"My eldest child was one when I went back to uni: I was a single parent and worked part time as a nanny and taking in ironing.

"I've always been really good at focusing. I always thought that was normal, but then when I started mentoring writers I realised that not everyone has that ability to focus. Maybe it's because I'm a Taurus so I'm pretty stubborn."

She also runs an online business called 'Girl and Duck,' where she provides creative writing masterclasses.

"The name came about in a strange way," said Jen. "I rang Gus Gordon, a well established children's illustrator, and said I want a logo. He asked me what the business was called, I said I don't know. He asked what picture I wanted, I said I don't know; although I do like how you draw ducks. Gus began working on the logo and he named the file Girl and Duck and that was how the name came about," Jen laughs.

"I love teaching classes, but it can be intense. I started Girl and Duck thinking it would be all about the technical aspects of writing, but in reality, it's a safe landing place where people have permission to be creative across all ages. There are a lot of women in their 70s which surprised me, but the older women have so many

stories to tell. They are all great founts of knowledge.

"The industry is exceptionally sexist. On the ground it's not, but structurally it is. There's still a presumption that writing children's literature is 'women's work'."

Jen writes predominantly for middle grade readers and finds it a challenge to include characters that are representative of gender diversity, mostly due to mass marketing trends. She is also mindful of trying to be representative of people living with disabilities.

"I heard a fascinating interview with Jen Campbell who reviews books. She talked about being a person with a disability and how books always represent disability as a disfigurement in villains. "There are sensitivity readers now, so you can choose to have your book put through a reader before it's published.

"My favourite part of the job is the collaboration, the friendships and the connection with readers at events or through letters. The worst is the isolation and the frustration. I don't get rejected very often anymore but the length of time between writing and publication can take years. It creaks along like a mechanical crab. You have to have motivation and self belief.

"It is time consuming and a juggle, but I'm fortunate to have a Virtual Assistant, who's living in Korea at the moment. She's super helpful. And my partner works part-time at Cobaw Health and part-time as my IT person which frees me up to write more, otherwise my publisher's asking, "Where's your work?"



Arts About

by Nancy Whittaker

December, 2021



☆ Kareen, Jeff and Dr O'Connor.

JUST down the road from me is the fabulously revitalised Methodist Church, which is now Cascade Art Gallery.

At the recent launch of Jeff Gardner's book of poetry and prints *Lucy the Dragon*, Dr.

Juliet O'Connor made a very insightful speech. She is a specialist in children's book history, having curated a collection of five centuries of children's books at the State Library of Victoria.

The exhibition includes the No. 1 print from each Limited Edition over the last 20 years. 170 prints and new Jeff Gardner etchings inform the narrative of this exhibition. Jeff's prints are dreamlike, with entertaining titles such as *Small Treasures* and *Life in Orbit*. Swirling energy and fine detail are depicted in a variety of printmaking methods including etching,

Painter, Printmaker, Poet

drypoint, aquatint, screen print and lithographs. In her opening address Dr. O'Connor explained the background to the book in considerable detail.

To quote, "Many of you know Jeff through his achievements as painter and printmaker, but as we absorb the chronology of his first printings around us, I'd like to add the context of his poetry. Jeff's latest book of poetry, *Lucy the Dragon*, is available in the magnificent limited edition of 10 copies plus one artist proof and as the first book in the *Little Orbit Books* series.

Lucy the Dragon complements Jeff's earlier collection of verse *Two Noisy Miners Went to Sea*, and he regularly contributes his poetry to the quarterly *Daylesford Macedon Life Magazine*.

Jeff was travelling with his daughter Pippa who was 12 years old and unimpressed with the lengthy trip. So, Jeff amused her with stories inspired by her new puppy Lucy the Labrador. This was the genesis of the first story in verse called Rabbit Jam in the book *Lucy the Dragon*.

This marvellous family story references many things in Jeff's life in addition to his wonderful daughter Pippa. A further influence is the 19th

Continued on page 19



☆ *Lucy the Dragon*.



☆ Dr O'Connor amid Jeff's prints.



☆ Exhibition Catalogue.



☆ Pippa in the crowd.

POP UP GOLD



Beautiful linen, cotton, hemp and silk pieces from Christine Boyle's own label as well as other high quality South East Asian makers. There is also a great pre-loved collection and Peace Bomb Jewellery from Article 22.

1 Spring Street, Maldon



☆ The crowd – including Simon Dow, Nancy Whittaker, Cheryl Mills and Christine Johnson.



Community Bank Maldon & District

Scholarship Program

Need help with the costs of study?

Applications are now open for \$2,000 scholarships to go towards the cost of study in 2022. Four categories will be awarded: University / TAFE / higher education, Agriculture and Indigenous

Application forms and detailed application guidelines are available on our website – <https://maldoncb.com.au/investing-back-community/sponsorships-grants/> Applications open on 1 November 2021 and close **5pm Friday 17 December 2021** Scholarship recipients will be notified in January 2022

Community Bank Maldon & District is pleased to be offering four scholarships in 2022 worth \$2,000 each, across four different categories. The purpose of each scholarship is to support students in the Maldon, Newstead, Harcourt, Dunolly and Mount Alexander districts for new or ongoing studies in 2022. Scholarships are awarded to cover costs associated with education, such as course fees, rent, purchasing computers, books, equipment or other resources associated with your course/training. 2022 scholarship guidelines including detail on the four categories of scholarship are available on our website or by contacting Shannon Burdeu, executiveofficer@mdcb.com.au or 0478 435 110.

ADVERTISEMENT

Maree Edwards MP

STATE MEMBER FOR BENDIGO WEST

Listening Posts are postponed until further notice.

My office is still available for assistance, please contact us on 5410 2444 or maree.edwards@parliament.vic.gov.au.



Suite 3, 16 Lockwood Road
(PO Box 1238),
Kangaroo Flat, Vic 3555
P: 5410 2444
www.mareeedwards.com.au

Authorised by M Edwards, 16 Lockwood Road, Kangaroo Flat
Funded from Parliamentary Budget

ADVERTISEMENT



Federal Member for Bendigo

LISA CHESTERS MP



PO Box 338 Bendigo 3552
Cnr. Williamson & Myer Sts, Bendigo 3550

T: 03 5443 9055 • F: 03 5443 9736
E: Lisa.Chesters.MP@aph.gov.au

www.lisachesters.org

@LMChesters • @LMChesters

Authorised by L. Chesters, ALP, 16 Myers Street, Bendigo

Love That Jam



☆ Scrumptious jams that add zing to your special dessert.

Sometimes you just gotta 'Love That Jam'! Millie Ousley is passionate about the delicious jams that she produces in Maldon.

The jam contains 100% Australian fruit, and the unique flavours are amazing.

Millie, founder, creator and jam stirrer of Love That Jam, developed her unusual jams in 2020 in Maldon. She combined some 'kooky' flavours and, with two teenage boys as her tasters, six jam flavours and one relish were born. Millie, who is well known in Maldon for her incredible cake making skills, confided that she was influenced by Willie Wonka and Adriano Zumbo when creating her flavours. Her mission is to 'spread' Love That Jam Australia wide.

Jam flavours are Pineapple Chilli, Turkish Delight, Blackberry Liquorice, Mango Passionfruit, Strawberry Basil and Berry Balsamic. And there is a Tomato Raspberry Relish!

Millie points out that her jams are not really for toast (although you could spread them on your favourite bread). They are perfect on scones or ice cream or as a dessert topping for cheesecakes. Millie provides some stunning recipes on her webpage www.lovetthatjam.com.

These jams would be perfect in hampers or as a special gift this Christmas.

For retail orders: email lovetthatjam2@gmail.com or phone 0432 191 952. Local stockists: IGA (Maldon and Castlemaine) or Berrymans Cafe & Tearooms.

You can see Love That Jam on Instagram or Facebook.

LOVE THAT JAM

Available at IGA
Maldon and
Castlemaine and
Berryman's in
Maldon.

www.lovetthatjam.com
lovetthatjam2@gmail.com
Phone: 0432 191 952



Newstead Country Store



☆ Enjoy a great coffee in the cosy dine-in area.

Newstead Country Store is definitely a 'one stop shop'. Scott and Melissa Chaney have recently renovated their store to include a cosy dine-in area. There is also outdoor dining under the front verandah - check out their new comfortable outdoor settings when you visit.

They offer great coffee and a range of teas. They also have an extensive menu of fresh home-cooked meals at reasonable prices. They cater for lunch (dine-in or takeaway) seven days a week. For orders phone: 5476 2252. On weekends breakfast is also available. Their freshly cooked takeaway meal packs are available from 11am Monday - Thursday, and they are excellent. You can check out what meals are available on any given day on their Facebook page.

A huge favourite with locals is their roasts. The meat is always succulent - roast pork, lamb or beef served with freshly cooked vegetables.

Scott and Melissa consistently have a smile ready to greet their customers. They also have a newsagency section and a selection of gifts in their store. Next time you are in Newstead, why not call in for a coffee or a meal and experience the old fashioned and friendly atmosphere they have created.

Christmas trading hours: Christmas Eve 7am-12.30pm, Christmas Day closed, Boxing Day 9am-1.30pm, 27 Dec 9am-2pm, 28 Dec 7am-2pm, 29 Dec 7am-2pm, 30 Dec 7am-7pm, New Year's Eve 7am-2pm, New Year's Day 10am-2pm, 2 Jan 9am-4pm, 3 Jan 7am-3.30pm, 4 Jan back to normal trading hours.



12 Lyons Street, Newstead.

Dine in or Takeaway
food available
seven days a week.
For orders phone:
5476 2252.

Normal trading hours:
Mon & Tues: 7am-2pm
Wed - Fri: 7am-7pm
Sat: 8am-7pm, Sun: 9am-4pm

Jade, Kerry and Karen wish the TT's readers, advertisers, contributors and supporters a very merry and relaxing Christmas and a safe and happy year in 2022.

Many thanks to Viv who has helped out throughout the year, and also to Beth and Mike who each week proofread the TT from cover to cover.

We will be taking a two-week break after our last edition for the 2021 year on Friday 24 December.

The next edition will be published on 14 January 2022.



*Merry
Christmas*

MALDON LICENSED POST OFFICE

*Leon and Brooke wish our
customers all the best in 2022.*

**Closed Christmas Day - Reopen 29 December.
Closed New Year's Day - Reopen 4 January 2022.**

If anybody knows how to serve up a dish of good old fashioned country hospitality, it's Jamie Heffernan.

Just over five years ago, Jamie combined his experience working in hotel management and travel to establish Maldon Getaways, a unique holiday-rental accommodation service.

Located in the heart of the historic gold-rush town, Maldon Getaways boasts 17 properties that each offer visitors the chance to unwind.

Jamie's generous hospitality will have you feeling right at home and wishing you could stay an extra night. Visit www.maldongetaways.com.au or follow @maldongetaways on Instagram.



Jamie

Maldon Getaways



#golocalfirst #mountalexander

SHOP
LOCAL

SHOP
LOCAL

Chaperon

Wines of Grange Hill Vineyard Victoria



Merry Christmas and best wishes for 2022 to all from Russell and Angelina xx.

Today our property 'Grangehill' still uses the buildings Edward Bond used to handcraft his wines under the 'Grangehill' labels in the late 1800's.

The original front label has been reproduced to celebrate the property turning 150 years old. The vineyard has been re-established using traditional dryland viticulture and organic principles. Our vineyard produces Shiraz on trellising. Grenache and Mourvedre are grown as bush vines. Traditional winemaking methods are used to handcraft our softly textured wines. Our wines are aged in French and American oak barriques for one to two years.

'Wines driven by passion and tradition.'

OUR WINE LIST

NEW RELEASE - 2021 ROSE (Grenache).

2019 GM (Grenache, Mourvedre blend).

2019 GSM (Grenache, Shiraz and Mourvedre blend).

2018 SHIRAZ.

Prices: single bottle \$20. Purchase six bottles - \$110.

Purchase 12 bottles - \$200.

2019 SHIRAZ Grangehill Vineyard:

Prices: single bottle \$40. Purchase six bottles - \$215.

Purchase 12 bottles - \$385.

We also offer free local delivery on 6 plus bottle purchases.

Our cellar door is located at 135 Gallaghers lane Eddington Vic 3472 (15kms north of Maldon).

Hours: 11am - 5pm Saturday & Sunday or by appointment

Closed Saturday 25 December - Christmas Day.

Open Sunday 26 December - Boxing Day.

Contact: Russell Clarke 0457 353 838 Angelina Chaperon 0468 455 544.

You can also visit us at the Maldon Market on the second Sunday of each Month and taste our wines.

You can follow us on:



grangehillvineyard



Cascade Art



☆ Jeff Gardner, Printmaker - Exhibition now open. See us!

Thursday - Sunday 10am - 5pm. Open regular hours right up until 5pm Christmas Eve. The exhibition closes on 31 January 2022.

Close to 200 Jeff Gardner number one prints, framed and unframed, have been released and are available for purchase.

"I drew from my life, imagination and memory. My subconscious was always in play and often surprised me. Is this surrealism? I'm not sure. To me, it goes to the very heart of self-expression," Jeff said.

Also available is the newly launched 'Lucy' book, named after the family Labrador dog who morphed into a dragon! Perfect for a little fun Christmas present.

LUCY THE DRAGON illustrations and poetry by JEFF GARDNER.

With wit and humour, Jeff Gardner has created a sensitive dragon whose one fault is that she likes to eat 'rabbit jam.' She also likes to sit on the couch with a pot of raspberry tea, two old cats and perhaps a mouse.

This book is not just for children. Lucy is also a story for the young at heart. Hand printed by the artist, the 16 illustrations in this limited-edition collectable book are original copperplate etchings accompanied by letterpress text on Hahnemühle etching paper.

The reproduction hardcover book was designed, printed, and bound entirely in Australia. Limited edition of four hundred hard-covered bound books - 48 pages RRP \$40 GST inclusive.

There is also a limited deluxe edition of original etchings and letterpress text and a hand-bound edition of 10 books.

The gallery is closed from 25 December 2021 and will reopen on 6 January 2022.



Beaton's Stores



Beaton's Store is an iconic retail store located in Main Street, Maldon. The building is one of Maldon's oldest. Originally a drapery store, it was constructed in 1892.

Beaton's is a popular choice for locals when shopping for women's and men's fashion. The store is overflowing with stylish clothing, hats and accessories this Christmas. As most summer clothing is linen or cotton, it is perfect for the hot days ahead. And the good news is that at present, they have many linen shirts reduced to \$69.

Beaton's are famous for offering high-quality garments at competitive prices. They feature an impressive range of brands instore and bargains online.

Beaton's range focuses on ethically sourced garments using natural fibres.

They have built a reputation for providing quality clothing made from cotton, linen, angora, possum and merino lambswool. They stock a broad range of sizes - womenswear from 8 - 26 and menswear from small to XXXL.

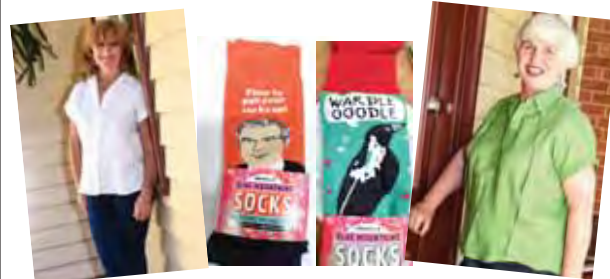
And there is more! They also stock a selection of jewellery and hankies by Rosedale. Both would make perfect stocking fillers!

Hours - Sunday to Friday 11am - 4pm. Saturday - 10am - 4pm. Closed Christmas Day and Boxing Day.

Kylie and her staff wish everyone a happy Christmas and a safe New Year.

BEATON'S STORES

STOCKISTS OF COUNTRY CLOTHING & FOOTWEAR



Check out our summer range for the ideal Christmas present.

4 Main Street, Maldon Ph: 0433 144 328

OPEN: Sun - Fri 11am - 4pm, Sat 10am - 4pm. Closed Christmas Day & Boxing Day.

48 Main

4 8 Main continues to entertain locals and visitors with music each week. On Friday evenings (fortnightly), there is an 'Open Mic' session from 7pm until late. Saturday nights you'll see original artists on stage from 7pm onwards and Sundays there will be a variety of artists performing from 4 - 6pm.

This well-loved micro wine bar offers a good selection of local beers, wines and ciders. Steve, the owner of 48 Main Wine Bar, has Brookes and Shedshaker beers on tap and a variety of bottled beer. The wine selection is impressive and extensive.

Steve said, "The dynamic duo - Lisa and Melissa will be behind the bar to ensure great service with a smile!"

48 Main will be open seven days a week over the festive season. Don't forget to throw your loose change into the hat on the bar to help aid the local fire brigade!



☆ The charming duo - Lisa (left) and Melissa are always happy to help you with your wine/beer selection at 48 Main.

48 Main

Local Bar
Local Beer
Live Music

Open: Every Thursday, Friday, Saturday & Sunday

MTA Travel



☆ Well known local Genine McHugh can help you with all of your travel plans.

I bring travel to your door literally. I am a mobile travel advisor with one of Australia's best franchises, MTA Mobile Travel Agents. I have a wealth of knowledge, and unlike other agents, I am available 24/7 to clients.

It is a new world, and I recognise that travellers are not as confident as before. Rules and requirements change, sometimes daily, maybe your favourite agent isn't operating anymore. Even seasoned travellers need an expert by their side. With 20 plus years of travel industry experience and 30 plus years travelling the world, my specialty would be listening to what you really want.

I believe that travellers want life-changing and life-affirming rare signature experiences and to have meaningful connections when they travel. Luxury is not about the latest designer bag - it is about the exclusive intimate experiences that will make your holiday an exciting, memorable adventure. For many years I have used my extensive knowledge of these experiences when organising travel. One-of-a-kind dinners, behind the scenes tours where clients meet the makers and growers of fabulous local produce.

I have travelled extensively. Cruising oceans and rivers, coach touring, train travel, car/camper-van travel, backpacking, hiking, ballooning and, so much more. I haven't travelled everywhere. But it's on my list! Contact me and experience the difference when it comes to personalised one on one service. 0400 914 007 gmchugh@mtatravel.com.au.

Genine McHugh, MTA Travel



Maldon Butchers



☆ Brad with his award winning pork and fennel sausages.

There is still time to get your Christmas order in. Make sure you place it by Monday 20 December. Brad and his team still have their delicious hams, free-range turkeys, pork roasts and ducks available.

Maldon Butchers will be open until 4pm on Christmas Eve, don't forget to pick up your orders early. While you're there, you might want to stock up on some of Brad's prize-winning gourmet sausages if you're planning a Boxing Day barbecue.

You might be looking for that last-minute gift so, why not select from the delicious range of sauces, pickles, local olive oil or seasonings on the shelves.

Maldon Butchers will be closed on Christmas Day, Boxing Day and New Years Day.

Brad, Priscilla and their hard-working team would like to wish their customers a happy Christmas and a safe New Year.

MALDON BUTCHERS

Quality

PLACE YOUR ORDERS EARLY!

Otway Pork & Free Range Christmas Hams, Chicken & Turkeys & a great selection of Seafood will be available this year.

All your Christmas party BBQ needs catered for including our famous sausages and rissoles.

Ph. 5475 2271

Maldon Getaways



☆ Maldon & Me is the latest amazing property listed by Maldon Getaways.

Maldon Getaways is an established accommodation booking service operated by Jamie Heffernan.

They offer a range of unique, holiday-rental properties ranging from quaint gold-rush cottages to stylish retreats.

"Our well-appointed private properties ensure visitors will enjoy a relaxing stay and also provide a comfortable base from which to explore Maldon and the surrounding regions," Jamie said.

With a lot of hard work, Jamie now hosts 18 quality properties. Maldon Getaways has been welcoming visitors to Maldon since 2016. Jamie has an eye for detail and always ensures everything is just right before guests arrive.

The list of properties is impressive. One of the newest properties listed is Maldon & Me (pictured).

This 1800s miners' cottage is renovated with a feminine and pretty emphasis. The home offers three bedrooms and two luxury bathrooms and boasts an outdoor cinema!

If you have family and friends staying over the summer months but can't accommodate them, Jamie can help. You can book online or phone him directly.

If you are looking for a beautiful gift idea this Christmas, you can purchase a gift card from Maldon Getaways, valid for a year. All properties are, of course, subject to availability.

For more info go to www.maldongetaways.com.au, or phone Jamie 0408 108 087.

Jamie wishes the *Times* readership a merry Christmas and a happy and healthy year in 2022.



tel. 0408 108 087

jamie@maldongetaways.com.au

www.maldongetaways.com.au

Gold Exchange Cafe



If you're looking for home-cooked delicious food with a great coffee to match, Gold Exchange is the place.

Over the festive season, owner Cathy and her hard-working crew will be serving a selection of cakes with a pick me up coffee while you take a break from Christmas shopping.

Breakfast offers something for everyone, from the big Aussie Breakfast to the super healthy Brekky Bowl. The Brekky Bowl is well-loved by locals. House-made baked beans, mushrooms, spinach, feta and poached egg - what a combination!

Later in the day, you might like to relax with a glass of local wine with Smoked Salmon Smash (smoked salmon, avocado, spinach and egg on sourdough) or Cathy's famous organic beef burger.

Cathy wishes her customers a happy Christmas and New Year.



☆ Make time for a coffee at the Gold Exchange this festive season.

Maldon Neighbourhood Centre



☆ Maldon Walking Group gathering at the Maldon Neighbourhood Centre.

Goodbye 2021 and welcome 2022!

The COVID-19 pandemic has continued to affect the activities and programs of the Maldon Neighbourhood Centre in 2021. Despite this ongoing challenge, we have kept the community safely connected through our programs. Two significant projects - Climate Ready Maldon and Connect Maldon - were completed.

"We'd like to thank all the staff and volunteers of the Maldon Neighbourhood Centre and supporters from the community.



The Maldon Neighbourhood Centre will be closed from 3pm Tuesday 21 December until Monday 17 January 2022.

We wish our community a wonderful Christmas and Happy New Year.

www.maldonnc.org.au ~ facebook.com/maldonnc

They have worked so hard this year in very trying circumstances," said Coordinator Amy Atkinson.

Our Occasional Childcare service has seen significant personnel changes over the last 12 months. The present team of Anna Robertson, Courtney Bright-Casey, Julie-Anne Leerson and volunteer Lesley Rowbottom bring some amazing skills and energy to the program. We will be welcoming families after the Christmas break from 24 January 2022.

Our weekly Playgroup has been a wonderful way to connect families with small children, to each other and with the Neighbourhood Centre more broadly.

"The Baringhup-Maldon Community Bus has been parked more than we would like this year with interruptions to charters, community transport and our popular bus tours due to varying restrictions. The Community Bus is back on the road and we'd love to see it out and about as much as possible. Please call our Bus Booking Officer, Stewart, for any charter enquiries 0428 329 299," said Amy.

2022 will be an exciting year of learning, with some postponed courses kicking off. Cooking Together and Connecting to this Country are two new courses postponed until 2022. And our favourites, like Simple Woodwork, run in partnership with the Maldon Men's Shed, will continue.

"The program for the first half of 2022 will be in the *Midland Express* on 11 January and, it is packed full of opportunities to learn, gather and connect."

Maldon Market - Hand Made, Home Grown has moved to its new location at the Bill Woodfull Recreation Reserve, where we have continued to operate COVID-Safe markets in accordance with public health directives.

"We have received wonderful feedback from visitors and stallholders alike about the new location and are planning some seating and shade options for the market on 9 January 2022.

"We wish the Tarrangower community a safe and happy festive season and, we look forward to creating more opportunities for 'Friendship & Learning' at the Maldon Neighbourhood Centre in 2022."

The Maldon Neighbourhood Centre will be closed from Tuesday 21 December and re-open on Monday 17 January. Information about upcoming events will be available on our website (www.maldonnc.org.au) and Facebook page (www.facebook.com/maldonnc).

For more information: please contact MNC on 5475 2093 or info@maldonnc.org.au.

GOLD EXCHANGE CAFE

EVERYTHING HOMEMADE!



Wishing everyone a safe and Merry Christmas. Thank you for your custom and hope to see you in the New Year!

Open Boxing Day 8am - 4pm and

New Year's Day 8am - 3pm

46 Main Street - 0439 368 077

Mon - Fri: 6.45am - 3pm ~ Sat, Sun: 7.30am-3pm

WHAT MAKES US HAPPY?



☆ Maldon Baptist Nativity 2021.

CHRISTMAS is a happy time and it is meant to be a happy time for all, but it brings me to this question. 'What makes us happy?'

For a baby it is a feed, a comfy bed and of course, a dry nappy. For a child it may be a new toy, some lollies or a visit to an amusement park, followed by a treat at the ice cream shop. For a teenager happiness may be found in an invitation to a party, a new outfit, or a solution to their skin problem. What about the early adult? Happiness may be found in a secure job with opportunities to advance and earn a good income. Happiness for this age group may also be found in a solid, long term relationship.

What about the middle aged? Where is their happiness found? For them it may be in paying off their mortgage and being able to use their money from now on to build things for their future. Then we come to those in retirement. What makes them happy? Good health, security and the opportunity to do the things they dreamt about as they worked their way through the previous stages just mentioned.

There is one more question I'd like to ask, particularly at this time of the year. What makes God happy? Christmas does. It is not the tinsel or the sumptuous Christmas meals, but it is in the giving of a gift. Not just any gift but it is the special Gift of His Son Jesus who He gave to us 2000+ years ago.

What makes God happy? God is happy when we accept and receive His Gift. We do this by believing in His Son Jesus, who was given to pay the price for our wrongs (our sin). This restores our relationship to God our Creator.

What makes God happy? Our faith in Him and in His Son Jesus Christ makes God happy, and that is something worth thinking about.

Don't forget, Christmas begins with Christ.

Our Christmas services: Sunday 19 December at 10.30am and Christmas Day at 9.30am.

Maldon Baptist Church, corner Templeton and Edwards Streets.

Happy Christmas!

Pastor Gavin Alexander
Maldon Baptist Church

Much Ado



☆ Stunning hampers can be tailored to your needs.

Gourmet Christmas Hampers

Much Ado has gorgeous Christmas hampers in store right up until Christmas Eve. They are available in three sizes, small - \$50, medium - \$100 and large \$150. A perfect gift for businesses and individuals to show their love and appreciation. Lauren from Much Ado said, "We can make any of the hampers to a brief - we are completely flexible and are happy to work at any price point."

Exquisite new stock is arriving daily. Charming pots and practical wooden spoons from France, Artisan block print cushions and napkins, Botanical printed cushions, European kitchenware and durable enamel Falconeware. Beautiful lamps, vases, fine china mugs and more. They also have some unique Christmas decorations to beautify your tree this year.

Also just in are some beautiful new books and some vintage puzzles and bingo games which make perfect stocking fillers.

Produce

The pantry tables are also well stocked with local teas from Teaporium, small-batch relish, mustards, pickles and local honey. These condiments are perfect for the Christmas table.

Much Ado recently stocked new local wines from the 'Farmer and The Scientist' range. Varieties include; Rose, Pinot Grigio and Shiraz. And a new Lome Shiraz has been added to the shelves.

MUCH ADO
GENERAL STORE. MALDON
22 Main Street

MUCH ADO MALDON CHRISTMAS HAMPERS

Our gorgeous Christmas hampers are available in three sizes

Small \$50

Medium \$100

Large \$150

The perfect gifts for businesses + individuals to show their love + appreciation to those that deserve it most.

All our christmas hampers can be made to brief + are entirely flexible – happy to work to any price point.

Phone 5475 1005 or info@muchado.com.au

Maldon Takeaway



☆ Please support the MAAW Christmas Tree Appeal this year.

This year Maldon Takeaway is asking for donations for MAAW.

Their 2021 Christmas Tree Appeal is underway to raise funds and goods for Mount Alexander Animal Welfare. MAAW is a group that re-homes rescue pets and promotes animal welfare throughout Mount Alexander Shire and beyond.

Rosie Skinner, Senior Shelter Manager, says that they are always appreciative of any donations gifted to the shelter. You can leave donations under the tree at Maldon Takeaway up until Christmas Eve.

Dried/canned dog or cat food, towels, toys, treats, small animal food (guinea pig/rabbits) and of course, cash donations are most appreciated. (There is a tin provided under the tree for cash donations).

Melitta and Adam and their hard-working team from Maldon Takeaway wish everyone a safe and happy Christmas and New Year.



**MALDON
TAKE AWAY**
10 Main Street

0476 887 062
Open 11am-7.30ish every day

Closed: Christmas
Day, 26 December
and New Year's Day.

Maldon Hotel



☆ The beer garden at Maldon Hotel just keeps getting better!

The Maldon Hotel offers a selection of 10 beers and ciders on tap, and they have a great range of reasonably priced wines. Combined with their excellent food, the Maldon is a perfect venue to celebrate with your family and friends over the festive season.

Michael and Matt have been busy beautifying the beer garden, and it is looking great!

A huge gazebo, which shelters the entire garden makes this a perfect all-weather location. "We have plans for live music in the beer garden over the coming months," Michael said. "This will most probably be on Sunday afternoons." Keep watching the *TT* for details.

Their menu is extensive, and there is a varied selection of specials daily. Their pizzas are excellent with a good choice of toppings. All meals are available takeaway. It's a good idea to phone your order on 5475 2231.

Opening times are Monday to Thursday 4pm - late, Friday to Sunday 12pm - late. The Maldon will be closed on Christmas Day only.

Michael, Matt and staff wish their customers a safe and happy Christmas and New Year.



**MALDON
HOTEL**

**Great pub food
at reasonable prices**

Dine In or Takeaway

Varied specials board on offer daily.

Pizzas available 7 nights a week.

All meals can be ordered as a takeaway.

Phone your order in on 5475 2231.

Open 7 days a week

Monday - Thursday 4pm - late,

Friday - Sunday 12pm - late.

Closed Christmas Day only.

58 Main St., Maldon - 5475 2231

**Thompson family
Funerals**

Castlemaine & District Funeral Parlors

123 Mostyn St., Castlemaine 5472 2202



- The family that cares -

Peter Thompson and family of
Thompson family Funerals
would like to extend their wishes
to the community for a

**Peace filled
Christmas and New Year**

Compassion Respect Understanding



MDCB Letter to the community



☆ L to R: Paul, Adam, Lara and Kyle from the Maldon Branch.

As Chair of our local company that runs our Community Bank Maldon & District, I am proud to announce the bank invested over \$300,000 into our communities during the 2021 calendar year.

This is one of our largest contributions ever and it simply could not have happened without the backing of our great community, especially customers, community groups, members, directors and staff – thank you!

Our company formed over 20 years ago to meet the community need for a bank, establishing a social enterprise model where community funds came from locals taking up our service. Since inception, we have provided over \$3.5mill back to the community to meet a myriad of further needs.

In 2021, Community Bank Maldon & District supported:

- Maldon Primary School
- Maldon Football Netball Club
- Mount Alexander Business Awards
- The Maldon Classic
- Maldon Croquet Club
- Castlemaine Golf Club
- Maldon Golden Movies Film Society
- Maldon & District Campdraft
- Maldon Petanque Club
- MDCB 20/20 Castlemaine and Districts cricket competition
- Maldon Easter Fair
- Maldon Neighbourhood Centre
- Maldon Bowling Club
- Maldon Photographic competition
- Maldon Golf Club and hole-in-1 competition
- Maldon Inc
- Maldon Twilight Dinner
- Maldon & Baringhup Agricultural Society

Over \$110,00 has been invested in 55 community projects through our community partnership (sponsorship) program. In September 2021 we gave away over \$200,000 in one evening for community organisation needs. An additional, \$100,000 was invested into our community grants fund ready for a future large community grant round. Our community grants program is usually held every 2-3 years.

Community needs that we have delivered include Driver Education program, Small Business Action program, scholarships, lighting, seating, defibs, prizes, scoreboards, promotion, shade sales, equipment, water supply, pool furniture, renovations, community development and digitising history. Also, we sponsor the *Tarrangower Times* through advertising each year, outlining our ongoing commitment to the local community and understanding the importance of a paper being able to provide relevant and timely local information regarding events and activities in the community. We've been really pleased this year to be the sponsors of the schools' supplement each fortnight which encourages primary school students to foster a love of writing.

Our professional board seeks to keep improving to continue meeting this need and also have a real appetite for bolder, longer-term projects - so please let us know any ideas.

Thank you to all our current customers as you play a vital role in the prosperity of our community. The more we can do for you, the more we can do for everyone. This is our simple model and with local staff, members and board, our organisation exists to strengthen our communities.

For those wanting to start or do more banking with us, you don't need to live or work in our community to bank with us. Once you have your accounts or insurances with one of our three Community Bank branches, Newstead, Maldon or Dunolly: you can bank anywhere within the Bendigo Bank and Community Bank network—online, in any branch or via telephone banking. Our services include savings accounts, personal and home loans, business accounts, insurance, investment, super and financial planning.

Every account that you open, every loan you take out, every insurance policy or other product you purchase from the Maldon & District Community Bank contributes to the accumulation of funds where we re-distribute at least 80% of profits via our community partnership or grants program. So there's a simple reason to bank at the Maldon & District Community Bank—because it means you get great local banking service, competitive products and that your part of strengthening your community. Feel proud when waving your card to buy!

Even though the Community Bank has been around for over 21 years, how our model works is still unknown to many and there are still myths and unknowns – so let's debunk these.

The Community Bank is locally run by a board of directors – all of whom are professional, passionate and committed to the local community. There is support for the board from our Executive Officer, Shannon Burdeu, and Communications Officer, Nicki Renfrey. This dynamic duo is the engine room for our community support and communications. Shannon commenced in March 2021 and has hit the ground running and loves assisting community groups to achieve their goals. Nicki is the catalyst to why our communications are making great inroads into social media, e-newsletter, print and radio. Please connect where you can and interact (like and comment on our posts!) to support our messaging.

Our ownership is made up of local members who get a return on investment.

The branch staff maintain absolute confidentiality at all times. Customer details and activities are never discussed or shared with non-branch staff or the board. There is a very distinct line between the operations in the branch and the work of the board, so you can be rest assured that your banking details remain confidential.

Changing banks has never been easier. 'Open banking' is a game changer, allowing customers to own their own data instead of the bank owning it. This allows you to get better-suited banking products and switch products or banks more easily. This should also lead to more competition and drive down fees and charges.

The Community Bank operates in a franchise arrangement with the Bendigo Bank. This means that our Community Bank has all the same products as any Bendigo Bank.

Hope that settles any queries. People serving the bank are our reason for our success. This year we farewelled Wendy Merlo (Customer Relationship Officer) after 17 years and Karly Smith (Exec Officer and Director) after 14 years. Adam Balzan will also be departing at the end of the year after five years' service. Adam has been the gold standard and his financial, community focus and people skills will be hard to replace, but the door will open for a new opportunity. My appreciation for Adam's efforts is immense and I wish him well as he focuses on family and new challenges. Thanks also to our wonderful branch staff who continued to provide great service in a challenging year.

Please contact us through the following: Community Branches Maldon (81 Hight St - 5475 1747); Newstead (54 Lyons St) or Dunolly (109 Broadway) for all banking needs. Executive Officer, Shannon Burdeu 0478 435 110 for community needs, membership or more information about the company. Queries.

- <https://maldoncb.com.au/>
 - www.facebook.com/communitybankmaldondistrict/
 - www.instagram.com/communitybankmaldondistrict/
- Thanks again and we look forward to a prosperous 2022.

Ross Eggleton, MDCB Chair

Maldon Vet



☆ Be safe this Christmas and keep your pet on their regular pet food diet.

Andrea from Maldon Vets has some sound advice in keeping our pets safe this festive season.

As much as we love the Christmas cheer, our pets may not completely understand what all of the change and activity is about. Because of this, our furry friends could stick their noses in unsafe places or experience an unusual sense of anxiety. It's up to us, as responsible pet parents, to make sure we keep them cool, calm and safe over the holidays.

Pets seem to love human food, but too much can damage their internal organs. Loads of table scraps, especially if it's outside of their usual diets, can wreak havoc on their digestive systems. Xylitol, found in chocolates and lollies, can be fatal if eaten in abundance. Just be safe and keep your pet on their regular pet food diet. Treats specially formulated for pets are a safe alternative.

The Christmas tree takes centre stage during the holidays, and all of those dangly ornaments, flashing lights and wires make for an attractive new toy. Keep your tree secured and anchored so curious cats are not successful in pulling it down. Make sure the power and extension cords are tucked safely out of reach. And if you have a live tree, keep the tree water completely covered because it can contain fertilisers and bacteria that could make your pet very sick.

Maldon Vets will be closed from 24 December - reopening 4 January. In an emergency, you can call Andrea directly on the clinic mobile phone number 0492 805 480.

Andrea and Jackie wish their furry friends and owners a happy and safe Christmas and New Year.



Maldon Vet Clinic

DON'T MISS OUT!

Order your pet's food or medication by - Fri 17th Dec

CHRISTMAS HOURS

We will be closed from - 3pm Fri 24th December
Re-opening - Tues 4th Jan
For emergencies during this time please call **0492 805 480**

Ph 54 751 751
info@maldonvet.com.au
48 Hornsby Street, Maldon





Maldon Fudge and Ice Creamery - Still Making it in Maldon!



☆ Rich and smooth Whisky cream ice cream with sharp marmalade - yummo!

Maldon Fudge and Ice Creamery have happily settled into their new premises at 29 Main St and are looking forward to a busy holiday season. The move has given the long-established and much-loved business some increased shop space and allowed them to introduce some unique product ranges to Maldon.

Along with the new premises, some exciting new Ice Cream flavours have evolved. Maldon Butter Toffee and Orange Choc Chip are all proving very popular. Carmen has also developed some new Vegan Ice Cream recipes using coconut milk. Vanilla, Cherry and Chocolate Coconut have delighted all customers who have tried them.



☆ Personalised children's books are available at Maldon Fudge and Ice Creamery this year.

Old favourites French Vanilla, Milk Chocolate, Rum and Raisin, Bubblegum and Strawberry are still incredibly popular. The famous traditional Brandy Cream Ice Cream will be available again this December. You can place orders by calling in or phoning Carmen on 0447 573 050.

The move has also allowed owners Carmen and Stephen to set up a separate production area to make their delicious Ice Cream and Fudge. The new space has also allowed room to introduce a range of Nougats. They are all made on-site. Salted Butter, Raspberry Cream and Licorice are proving to be very popular. Making products on-site ensures high-quality products every time and supports other local businesses.



☆ Or .. Personalised socks!

In addition to the products made on-site, the business is also stocking a small range of other products. They have beautiful Wonderful Life Carousels, Baghera Ride-on Cars and pedal Cars. There is also a range of individually named products such as storybooks and pencil cases.

Gift vouchers and take home packs remain available. Carmen and Stephen are looking forward to seeing you over the summer.

From mid-December, the shop will increase opening hours to Wednesday to Sunday 11am until 4.30pm.

From 26 December the shop will be open seven days per week 11am until 4.30pm over the holiday period.



MALDON FUDGE AND ICE CREAMERY

Made Here

SMALL BATCH PREMIUM

ICE CREAM

FUDGE

Freshly made right here

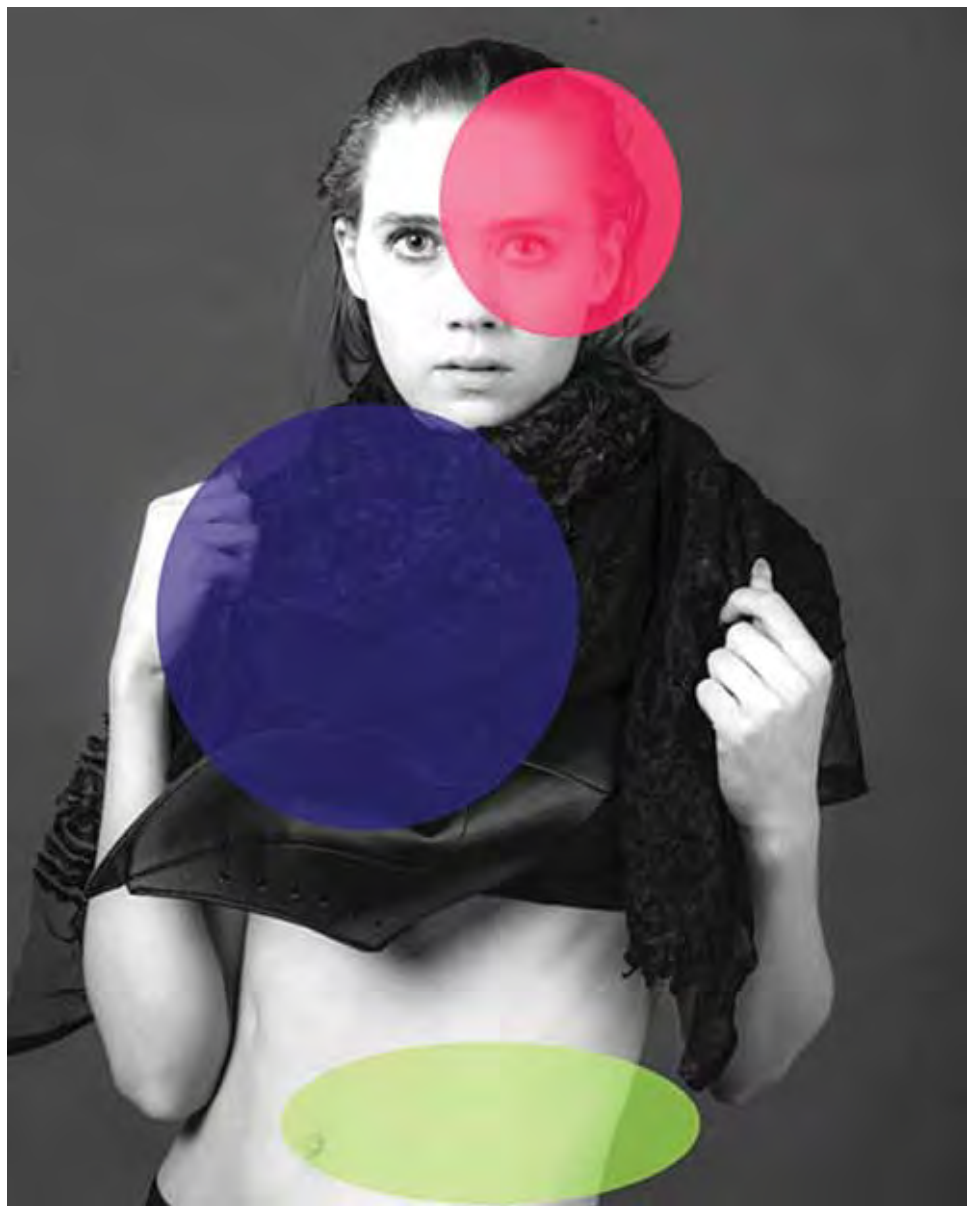


FREE Fudge Tasting

MALDON FUDGE AND ICE CREAMERY

MALDON MADE

Simon Dow



simon dow photographer

portraits / fine art / fashion /
creative

maldon studio / melbourne /
on location

0400 337 301

web / insta

simondowphotographer.com

As 2021 draws to a close, we are all invited to reflect on this year of change, interruption, and some deep and irrevocable shifts in our world.

The importance of the arts, including visual, performative and written, is ever more vital at a time when we feel our world and humanity struggling for balance, meaning and a way forward on new evolutionary pathways. Artists of all persuasions have continually raised the prickly questions and eased the hearts and minds of humans or left us all with burning questions.

EDGE galleries opened their doors this year with the vision to bring powerful and sometimes provocative work to Maldon. Despite the rolling lockdowns, we have been able to house four significant photographic exhibitions featuring the work of Jessica Ledwich, Arrayah Loynd and Simon Dow and evocative installations by Nicola Lay, Deborah Aldridge, Jessica Ledwich and Simon Dow.

The line-up of artists for 2022 at EDGE is very exciting, with eight new exhibitions scheduled, bringing some truly wonderful art to Maldon. We will also exhibit the finalists from both the Maldon Portrait Prizes and the Maldon Photography Competition. Look out for 2022 artist announcements soon!

EDGE galleries are grateful to Maldon for its warm welcome, and the ongoing deep conversations had with visitors in the gallery continues to inspire. We hope that once our world strikes a sense of a way forward, our artist talks, performances and workshop offerings can once again take off and help to inspire all who visit. Please see our website for more information on exhibitions, performances and artist talks.

We wish everyone in Maldon and surrounds a joyous holiday season with loved ones and look forward to throwing open our doors in February with the beginning of an amazing year of exhibitions.

Simon Dow is also doing portrait sessions with regional Victorians to bring them together into an exhibition and a book. Please contact Simon at EDGE if you are interested in participating.

Brad Hooper architect(ure)



☆ Providing comprehensive architectural services for new builds, additions and renovations; for housing, commercial and institutional projects; on urban, rural and sensitive sites; in contemporary and heritage contexts.



This architect likes spending time with clients, sifting the ‘musts’ from the ‘maybes’, diving into the ‘whys’ and grinning when we get to the ‘Ahas!’ Scratching a 4B pencil on the back of an envelope explaining concepts whether standing in a paddock or across a table. This is part of this architect’s day.

From the first walk on the land to sharing the dream, from that pencil sketch to the crisp precision of computer drawing, matching the wish-list to the budget, to winning permits, to turning the first sod, then scratching a detail on a timber off-cut and coming to a slick solution on the site, to that first cuppa in the new kitchen. It’s the journey of making places.

Maldon is the perfect environment for my practice. As a long-standing National Trust member, the built setting of the township is a great fit, and the former Calder’s Ironmongery building is an unbeatable workspace/living space. The district’s landscape never stops giving to a lover of the natural world. And not least, people make the place, and Maldon’s community has been welcoming and supportive before and during these COVID times. Thank you once again, Maldon.

Brad Hooper

brad hooper
architect(ure)
0418 105 954

bradhooperarchitect@gmail.com

| Advice | Concepts | Design | Documentation |
| New build | Alterations | Additions | Renovations |

C R E A T I N G S P A C E (S)
C H A N G I N G S P A C E (S)



Your Community Library

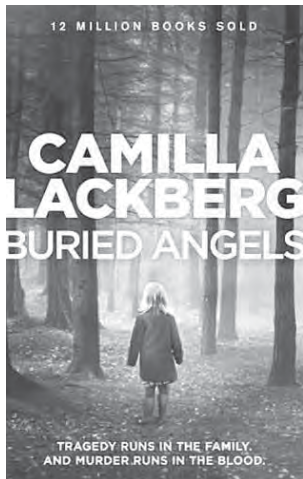
97 High Street, Maldon.

Open Mon, Wed & Friday 2-4pm, Saturday 9.30am - 12 noon.

Enqs: 0429 776 893

maldonathenaeumlibrary@gmail.com

The Maldon Athenaeum Library committee would like to wish all the library's members and volunteers a happy Christmas and peaceful New Year. We would also like to thank you all for your help and support throughout 2021. Season's greetings everyone.



The couple have barely settled in before they are subjected to an attempt of arson. And when they begin to remove the floorboards in the dining room, they find dried blood underneath.

Buried Angels by Camilla Läckberg

A family vanishes without a trace from the island of Valö outside of Fjällbacka. The dinner table has been exquisitely set, but everyone except the one-year-old daughter Ebba is gone.

Years later Ebba returns to the island with her husband Tobias to renovate the house and open a B&B.

BLAST FROM THE PAST

THE CHINESE QUESTION

On Tuesday 24 June 1862 the *Tarrangower Times* editorialised about the 'Chinese Question'. The *Times* said that there had been many reports of Chinese being mistreated on the goldfields. The Chinese had usually borne this harassment with 'their accustomed meekness and humility'.

In its editorial the *Times* reported that the Melbourne Chamber of Commerce had declared themselves in favour of the Chinese community because they were spending money and supporting local businesses. On the other hand most European miners resented the Chinese who they saw as competitors. Many Europeans also thought that the Chinese's mining methods spoiled ground that they could mine more efficiently.

According to the *Times*, the position of those writing on the 'Chinese Question' depended on their own prejudices. The Chinese did not attend the usual places of worship and so they were not popular among devout Christians. As they were not heavy drinkers, they were not popular with local publicans. The *Times* however believed that in future the Chinese were more likely to adopt the Europeans' drinking habit rather than adopt their religion.

The *Times* said that it had at times been both disgusted and amused at the animosity towards the Chinese. The *Times* recalled that years ago when the Chinese first appeared in London they were 'quite a curiosity' and fashionable ladies flocked to the tea shops that employed them to be advised on the latest blends. In Australia the same people who in England would have seen the Chinese as members of an exotic civilisation now depicted them as demons or sub-human.

The *Times* had some sympathy with those who found the Chinese ugly and poorly dressed but it observed many of those who opposed the Chinese were not so good looking. In fact, if they were shaven and dressed in loose blue trousers, blouse and an appropriate hat, they might pass as Chinese.

As the Chinese had come to Australia lawfully, they should receive the full protection of the law and not be prosecuted. There was also no economic reason to exclude them as they were industrious and Australia had more than enough land to accommodate them.

Many were concerned that the great majority of the Chinese were young single men who hoped to make their fortunes and return home. Without wives or their countrywomen, some Europeans feared that there would be an ever-increasing number of mixed race children. The *Times* pointed out that the British had a 'good deal of the mongrel' in them being a mix of Celts, Normans, Saxons and Danes. The British saw their hybrid heritage as a positive contribution to their character.

The *Times* knew that its views might be unpopular, but it hoped the editorial would stimulate discussion among its readers.

This information was supplied by the Maldon Museum and Archives.

The Hidden Child by Camilla Läckberg

Crime writer Erica Falck is shocked to discover a Nazi medal among her late mother's possessions. Haunted by a childhood of neglect, she resolves to dig deep into her family's past and finally uncover the reasons why. Her enquiries lead her to the home of a retired history teacher. He was among her mother's circle of friends during the Second World War, but her questions are met with bizarre and evasive answers. Two days later he meets a violent death.

Detective Patrik Hedström, Erica's husband, is on paternity leave but soon becomes embroiled in the murder investigation. The dark past is coming to light, and no one will escape the truth of how they came to be.

The Ice Child by Camilla Läckberg

SEE NO EVIL

It's January in the peaceful seaside resort of Fjällbacka. A semi-naked girl wanders through the woods in freezing

cold weather. When she finally reaches the road, a car comes out of nowhere. It doesn't manage to stop.

HEAR NO EVIL

The victim, a girl who went missing four months ago, has been subjected to unimaginably brutal treatment – and Detective Patrik Hedström suspects this is just the start.

SPEAK NO EVIL

The police soon discover that three other girls are missing from nearby towns, but there are no fresh leads. And when Patrik's wife stumbles across a link to an old murder case, the detective is forced to see his investigation in a whole new light.

Author: Camilla Läckberg is a Swedish crime writer. As of the early-2010s, her work has been translated into more than 40 languages in 60 countries. She has been called 'the rock star of Nordic noir'.

Book reviews courtesy of goodreads.com.

The Maldon Athenaeum Library Team

Arts About

by Nancy Whittaker

December, 2021



Continued from page 10

century English artist, writer of travel journals and non-sense poetry, Edward Lear.

I spent a sociable afternoon speaking to Jeff, Karen and Pippa about the inspiration and execution of the breadth of creative endeavour that brings us all here to celebrate Jeff's body of work. Jeff explained that he wanted to be an artist from the age of 14 and first wrote poetry and stories when he was 15, combining them with his drawings.

Pippa says that growing up everything she did with Jeff was about creating stories.

Kareen Anchen, Cascade Art Gallery Director has been the driving force behind publication of both the *Little Orbit Books* version and the limited edition of *Lucy the Dragon*. I have been lucky to see some of the future manuscripts Jeff and Kareen

have prepared and they are sublime.

These editions of *Lucy the Dragon* are the culmination of the extraordinary creativity of Jeff Gardner, and the familial relationships between Pippa, Karen and Jeff.

It seems fitting that I conclude by quoting Pippa. She told me she adores the book and the character of Lucy the dragon, noting that Jeff's talent is inspiring, his imagination exceptional and that in fact everything Jeff does is art."

Dr O'Connor concluded by saying, "Today, we celebrate Jeff as a superb painter, print-maker and poet."

Drop into the Cascade Art Gallery between now and 31 January: at The Church, 1A Fountain Street, Maldon.

For further information call 0408 844 152 or go to www.cascadeart.com.au or info@cascadeart.com.au.

Tarrangower Times

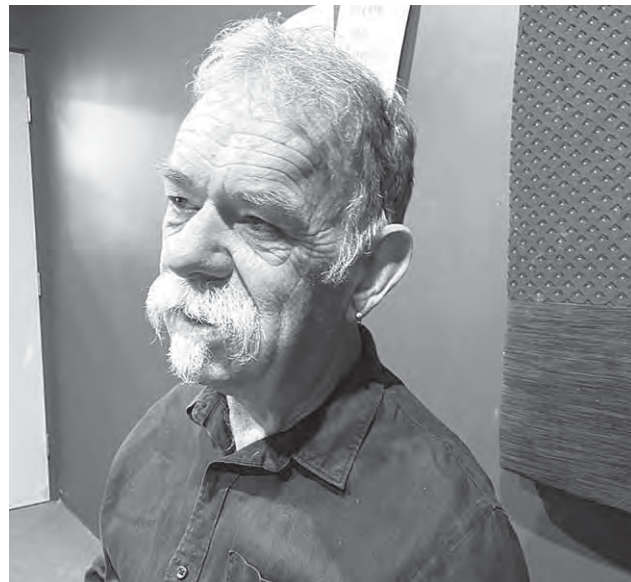
Your paper, your stories, your news!

We would love the paper to be 'your' paper, so please tell us what's working for you; what you like, what you don't, what you'd like to see more or less of and what new things you'd like included.

Write a letter to the editor and email it to editor@tarrangowertimes.com.au or post to P.O. Box 18.

If you'd prefer you can call: 5475 2256, 0408 594 246 or pop in, when COVID allows and say hi to Jade at 4/93 High Street, Maldon on a Monday, Tuesday or Wednesday morning.

IMT - In Maldon Today Radio Program



TODAY it's the program you wait all year for. The whole dang lot of us in the studio – albeit in two one-hour shifts - to farewell 2021. A cacophony worthy to be compared with Question Time as each of us try to emulate Sam Kerr's hip-and-shoulder on the nearest dickhead.

Last Friday 10 December Keven and Nancy discussed with Chris Blake (Blakey, pictured) his penchant for collecting gizmos, including everything from old petrol bowlers, enamel fuel signs and drag racing cars, to buildings and most recently French Bulldogs called Gizmo and Spud. We learned that a drag car can get up to 174 kilometres per hour in seven seconds with seven gear changes. Classic cars like a Citroen and a couple of old Holdens are also part of Blakey's collection; we also explored the difference between Vintage and Classic cars, and what constitutes a collector.

And that will be all from IMT for this second Plague year. Our first broadcast in the new year will be on 14 January, when Nancy and Slats meet Daisy Bainbridge to anticipate the 2022 Twilight Dinner.

To catch up on our previous programs click on <https://www.mixcloud.com/nancymay007/>.

See our ad on page 22.

Mike Smythe

MALDON BRIDGE CLUB

EXPERIENCE WINS THE DAY



"THE game of Bridge is hugely experience-based," Gavin Wolpert, a top professional and a co-founder of an influential website, bridgewinners.com, said recently.

He's 33 years old - an age that, in the bridge world, counts as something like late adolescence. The longer you play, the better you get at making good decisions, because you've seen it before. When you're young, you don't walk in and suddenly start winning every event.

There is no doubt that our winners this week certainly fitted well into the above statement.

Kevin and Newstead Jo have been playing Bridge for many years and have the luxury of discussing their day's play while resting for the evening at home after bridge perhaps. I believe Jo taught Kevin the art of Bridge some years ago and they have combined well as a team for many years.

The cards were varied and a lot of thought had to go into

making the best bid. To get over-excited and go to game was not always successful and the opposition quickly took advantage by earning extra points. A double: or two were made – some successful, others not!

At the end of play the scores were tallied and it was not a surprise to hear the top scorers were Kevin and Newstead Jo with 52 points. Gretchen and Louise were gallant in defeat and earned second place with 49 points. Third place went to Aileen and Judy Mac with 42 points. There was an equal fourth between Fred and Mark, along with Maldon Jo and Sandy with 39 points each. Well done to everyone and no doubt we all will be hoping for easy hands next week to deal with.

Scones, jam and cream were on the menu for afternoon tea and enjoyed by all. Thank you Maldon Hotel staff once again. One more week to go before we all take a break for Christmas and New year and hope everyone enjoys their special time with family and/or friends.

Whatever your age group or skills please feel free to join us each Thursday from 12.45pm to 4.30pm or on Mondays at the Maldon Hotel 1.15pm to 4.30pm to help us in our endeavour to:

USE IT OR LOSE IT
Judy McKnight

TT Dine Out Directory

BERRYMAN'S CAFÉ & TEA ROOMS - MALDON

30 Main Street - 5475 2904
Open 7 days
Full menu is available to take away.
We also have some individual home-made frozen meals.

BULL & MOUTH HOTEL - MARYBOROUGH

119 High Street - 5461 3636
Open for Breakfast, Lunch and afternoon tea
Sunday - Tuesday 9am - 5pm and
Breakfast, lunch, afternoon tea and dinner
Wednesday - Saturday 9am - 10pm.



CAFÉ MALDON - MALDON

52 Main Street - 5475 2022
Open 7 days - dine in and takeaway
Please call to book. Only 10 inside and 8 outside.
Seating is for one hour only.
Please keep your mask on until seated.
<https://order.hungryhungry.com/cafemaldon/menu>

CROWN HOTEL - NEWSTEAD

8 Lyons Street - 5476 2222
Open 3pm every day
Meals Thursday - Sunday
Friday night roast
Sunday night pizza 5.30pm - 7.30pm
Bottle shop open from 3pm.

CUMBERLAND HOTEL - CASTLEMAINE

191 Barker Street - 5472 1052
Open Monday - Thursday 9am-12pm, Friday 9am-1am, Saturday 10am-1am, Sunday 11am-11pm.
Meals at the Bistro 7 days per week.
Lunch 12pm-2.30pm, Dinner 6pm-8.30pm.
Extensive Menu.

DIG CAFE - NEWSTEAD

13 Lyons Street - 5476 2744
Well known, well loved cafe with excellent food and coffee, fully licensed. Open 8.30am until 3.30pm each day and Friday nights for takeaway pizza from 5pm until 8pm. Bookings essential as numbers are restricted. www.digcafe.com.au

GOLD EXCHANGE CAFE - MALDON

46 Main Street - 0439 368 077
Open 7 days
Limited dine-in and takeaway.
Monday-Friday from 6.45am-3pm and
Saturday and Sunday from 7.30am-3pm.

KANGAROO HOTEL - MALDON

89 High Street - 5475 2214
Monday closed
Tuesday 4pm til close
Wednesday 12pm til close
Thursday 4pm til close
Friday Saturday and Sunday 12pm til close.

Le Sel DELI - MALDON

12 Main Street - 0417 329 776
Open 7 days a week
Monday to Thursday 9am - 3pm
Friday to Sunday 9am - 5pm
Saturday night **Le Sel French Bistro** contact us for bookings.

MALDON FUDGE & ICE CREAMERY

29 Main Street
(Between IGA and the Pharmacy)
Great range of Fudge, Nougat and Ice Cream.
Ice Cream is also available in take home tubs.
Open Wednesday, Friday, Saturday and Sunday
11 am - 4.30pm.

MALDON HOTEL - MALDON

58 Main Street - 5475 2231
OPENING HOURS
Monday & Tuesday: 4pm - close
Wednesday - Sunday: Middyay - close
Bookings recommended

MALDON ROSE CAFE - MALDON

6 Main Street
(formerly Zen Cafe)
Everything baked on premise.
All Press coffee, Harney & Sons tea.
High teas available.
Open 10am - 4pm Saturday & Sunday.

MALDON TAKEAWAY - MALDON

10 Main Street - 0476 887 062
Open 11am-7ish every day.
Fish and Chips, burgers, hot dogs,
loaded fries, souvlakis, pizza, coffee
and happy to be here service.



NEWSTEAD COUNTRY STORE - NEWSTEAD

12 Lyons Street - 5476 2252
Normal trading hours:
Monday & Tuesday: 7am-2pm
Wednesday - Friday: 7am-7pm
Saturday: 8am-7pm
Sunday: 9am-4pm



RAILWAY HOTEL - CASTLEMAINE

65 Gingell Street - 5472 1250
Great food, both traditional pub food and gourmet.
Daily specials.
Open 7 days a week for dinner and lunch on weekends. Phone : 5472 1250 for bookings.

Health & Fitness Directory

KEYSTONE PILATES

Keystone Pilates provides a safe friendly environment where people of all ages and abilities can work on their strength, flexibility and balance.

CALL FOR A FREE ONLINE TRIAL

The Faulder Watson Hall, Barker Street, Castlemaine
Contact Lloyd 0421 329 895



MALDON GOLF CLUB

GOLF LESSONS – on demand - all standards - clubs available

SOCIAL GOLF – 9am Monday and Friday. Ring to check times - 9 holes, free for members or \$10 green fees

RECREATIONAL - exercise and dog walking memberships available.

Enq: maldongolf4u@gmail.com or Gay Reid 0413 013 766.



SUMMER IS HERE - A GREAT TIME

TO GET YOUR BIKE SERVICED

(Mention this ad and we will donate \$10 from the service fee to the MALDON, MURRAY TO MOYNE cycling team, in support of the MALDON HOSPITAL)

51 Templeton Street,
Castlemaine
Ph: 5470 6333



MALDON CROQUET CLUB

(Established 1925)

Francis Street Maldon

Social Croquet every Tuesday, Thursday and Saturday from 9.30am and Tuesday evening from 7pm from October to March.

New players always welcome to come and give it a try. Equipment supplied. Also open to young players, Working With Children certificated members to help with learning and coaching available. Weekly green fees \$5.
Enquiries: Damien Kennedy 0428 130 764.



MALDON SWIMMING POOL

Tel: 5475 2074

Opens Saturday 4th December

Aqua Aerobics: 6pm Tuesday & Thursday - cost \$9.50 (or \$6 with season pass)

Lap Swimming: 6pm - 7pm Monday, Wednesday, Friday

Fun, Play & Recreation:

Weekends, School Holidays, Public Holidays: 1pm – 6pm

School Weekdays: 3pm – 6pm



treadpodiatry

TREAD PODIATRY

Providing superior foot care to those in need.

- Foot & ankle pain · Orthotics · Children's feet · Wound care
- Nail surgery · Sporting injuries · Diabetic foot health
- Gait analysis · General footcare

255 Barker Street, Castlemaine. Ph: 5472 3295




ARBORIST


Arborea
Tree Management
Consulting Arborist
Contract Climber • Tree Pruning & Removals • Cable Bracing & Risk Assessment • Mulching & Stump Grinding • Tree Maintenance & Protection • All Tree Works
Fully insured
Reubin Williams
0439 326 113

CARPENTER


Cain Carpentry
CONSTRUCTION
0407 651 287
Local Registered Builder.
Renovations and New Builds.

ELECTRICAL


EcoTech
ELECTRICAL & SOLAR
• Home automation
• New & heritage homes
• Home safety checks
• Security cameras
• Heating & cooling
Phone Pat Cummins
0400 066 932

JP

Justice of the Peace (JP)

Local JP Margaret McKnight available for witnessing documents by appointment.
Contact: 5475 2440 or 0439 752 465

PET CARE


Maldon Vet Clinic
Opening hours:
Tues - Fri 9am - 5pm
Ph 54 751 751
Fear-free consultations and home visits available

48 Hornsby Street
Maldon
Emergencies
0492 805 480

BUILDING DESIGNER

BUILDING DESIGNER
Maldon Based

DESIGN
Home Design
Planning Applications
BAL Assessment
Project Management
0402532082
eric@s3design.eco

COMPUTER HELP


COMPUTER HELP
Castlemaine Maldon Surrounds
call Stefan
03 4432 7106
support@dkom.com.au
www.dkom.com.au

ELECTRICAL

Ian Cain Electrical
Rec No 13585

Domestic, industrial, commercial, farming,
emergency call out on request
Carisbrook
Phone/Fax **5464 1402**
Mobile **0418 388 226**
ices@westnet.com.au

LOST & FOUND

The *Tarrangower Times* offers a **FREE** service for Lost & Found
5475 2256 or editor@tarrangowertimes.com.au

PET CARE


Mutz Kutz
All your pet grooming needs
Pet & stock feed + accessories
Bookings Essential
5475 1212
57-59 Main Street
Maldon

BUSINESS CARDS

BUSINESS CARDS
Full colour, 1 or 2 sides on 300gsm gloss card with FREE design.
500..... \$140.00
1,000 \$180.00
Phone Karen on **0404 357 556**
Don't forget they're tax deductible

CONCRETER

CONCRETER
PAT COLLINS
PATHS, SHEDS, FLOORS, DRIVEWAYS, PATTERN, COLOUR
PAVING ALSO BRICK PAVING
Shelbourne Road
Maldon
Ph. (03) 5475 1080

SEEN ANYTHING?

Seen anything interesting?
Call the *Times* on:
5475 2256

PAINTING


Ezy Paint
GIVING YOUR HOME THE COAT IT NEEDS
Interior & Exterior
Residential & Commercial
New/Old houses
Staining
Roofs
Over 15 years experience
Free Quotes
Ph: Daniel
0400 090 480

PLASTERING

Maldon Plastering Services
Heritage restoration, new homes, extensions and renovations.
No job too small.
Phone Richard Port
0412 397 404

CABINET MAKER

CABINET MAKING & INTERIORS
Custom-made fitted and free-standing furniture
Kitchens, kitchen renovations, wardrobes, vanities, bookcases etc.
Repairs and restorations
No job too small
Martin Waddington
Ph: **0423 405 863**
Email: mwaddington70@gmail.com

DIRECTORY

To appear in the *Tarrangower Times* **Business & Services Directory** for only \$14.40 per week, give Karen a call on:
0404 357 556
or karen@tarrangower-times.com.au

FLOORING

TRUE BLUE FLOORS
• Sanding & Polishing Specialists
• New & Old Floors
• Free Quotes
For Quality Workmanship
Ph: TIM OOSTENBRINK
0417 110 922
MALDON

PAINTING

Jim's Painting

0458 374 579

PLUMBER

Steve Kile
Licensed Plumber & Gasfitter
VBA Lic No 28819
Ph. **0409 638 966**
All your plumbing, gasfitting, roofing & drainage needs at competitive prices.
Free quotes/estimates, 32 yrs experience
stephenkile@outlook.com

CABINET MAKER

JOINERY & HANDYMAN
All Woodwork Jobs
Interior & Exterior.
Maldon and surrounds.
No job too small.
Free quotes.
Nick Pierce
Ph. **0491 115 459**

DRESSMAKER

DRESSMAKER / TAILORESS
Alterations & repairs.
Experienced and reliable.
Maldon based.
Very reasonable rates.
Phone: 5475 2952 or 0448 510 103

FRAMEMAKER

MOLLYPENNY
UNIQUE, TRADITIONAL & GALLERY STYLE
FRAMEMAKER
• FOR ARTWORKS ON ALL MEDIA, ANY SIZE
• BOXWORK FOR MEDALS & EPHEMERA
• CANVAS STRETCHING
• MIRRORS • REPAIRWORK
BY APPOINTMENT:
0412 194 760
mollypenny1@gmail.com

PAINTING

Malcolm Stone Painting Services
Maldon & Surrounds
Over 40 years Experience

All types of painting
Interior - Exterior - Inc. Heritage
Please call Mal on **0400 417 417**
Maldon

STOCK FEED

Stock Feed and Pet Food
Brands incl: Black Hawk, CopRice, Cobber and Barastoc Poultry Feed & Wild Bird Seed.

FREE LOCAL DELIVERY
Open 7 days a week
14 High St, Maldon.
Ph: 5475 1018
S P MACHINERY

CARPET CLEANING

Eastman
CARPET CLEANING
For all your carpet and upholstery cleaning requirements
GARY
0428 332 476
gary@eastmancarpetcleaning.com.au

ELECTRICAL

Cainpower
Bernie Cain
Your Trusted Local
Electrical Contractor
Rec 8335
Maldon & Surrounds
0417 526 308

HAIR DRESSER

Debbie's Salon
Mens & Ladies
HAIRDRESSER

for all your Hair Care
Closed Tuesdays
Sat. mornings by appt.
27 Harker St., Maldon
Ph: **5475 2400**

FREE!!!

Advertise your items under \$200 for **FREE**
Email: editor@tarrangowertimes.com.au
or phone: 5475 2256
animals must be free



The Tarrangower Times is bound by the Standards of Practice of the Australian Press Council. If you believe the Standards may have been breached, you may approach the newspaper itself or contact the Council by email (info@presscouncil.org.au) or by phone (02) 92611930. For further information see <http://www.presscouncil.org.au>.

PUBLIC NOTICES

Tarrangower Times

APOLOGIES FOR VARIED OFFICE HOURS ON MONDAY, TUESDAY & WEDNESDAY MORNINGS. AS THE OFFICE MAY BE UNATTENDED PLEASE CALL FIRST.
5475 2256 OR 0408 594 246

Russell Morris Concert Maldon Golf Club

Saturday 18th December 2021

Full details on times, facilities, food and bar, entry requirements, vaccination certificates, courtesy bus, special requirements etc
steampacket.com.au clif@steampacket.com.au

FOR SALE

FORD XH LONGREACH 'OUTBACK' UTE.
Excellent condition.
860,000km.
Plenty of spare parts including panels.
Price negotiable.
0428 507 610.

GARAGE SALE

Garage Sale
10 Reef Street, Maldon.
Saturday 18 December
8am to 3pm.

PUBLIC NOTICES

Panacea Estate

329 Seers Road, Welshmans Reef.
(Formerly Chapple's Cairn Curran Estate)

Saturday Sessions | Relax among the vines

Every Saturday, great music will be playing and the wine will be flowing, so grab a picnic rug (or nab some chairs and a table with us) and relax among the vines and gardens.



IMT - In Maldon Today Radio Program Tune in to 94.9 MAINfm

Every Friday morning between 9am and 11am.
Tune into www.mainfm.net or the TuneIn Radio App.
Studio guests and latest news and gossip in 'Street Talk'
Suggestions and feedback: inmaldontoday@gmail.com
or Facebook (IMT – In Maldon Today Radio Program)
SMS comments during the show (0488 863 186)
and sign it so we can read it out on air

Listen later on <https://www.mixcloud.com/nancymay007/>

FREE!!!

Advertise your items
under \$200 for FREE
Email:
editor@tarrangowertimes.
com.au
or phone:
5475 2256
animals must be free

Seen anything interesting?
Call the Times on: 5475 2256

PUBLIC NOTICES

ROB LEESON

Photographer



Pets, People, Portraits

0400 100 075

www.robbleeson.com.au

Advertising and material deadline
12 noon Tuesday
Phone 0404 357 556

The TT will be taking a two-week break after our last edition for the 2021 year on Friday 24 December.
The next edition will be published on 14 January 2022.

FOR SALE

HANDMADE KAURI TIMBER DOUBLE WASH TROUGH.
As new. Suitable for older home renovations.
Price negotiable.
0428 507 610.

Maldon Newsagency & Tattslotto



Open every day of the year! Shop when it suits you!
Come and browse our ever changing range of cards, ribbon and wrap.
Telstra & Optus prepaid mobile cards in stock.
Home delivery of all major newspapers, magazines & The Tarrangower Times.



Your local specialist
stationery store
Phone 5475 2433



CHRISTMAS GIVING TREE APPEAL

New Unwrapped gifts for children from babies to teenagers can be left at Maldon Information Centre in High Street until 18 December.
The gifts will be distributed to families in need throughout Maldon and surrounds this Christmas.
Call Bonnie Gainger on 0400 358 606 for information.

Proudly
sponsored
by

Maldon Newsagency & Tattslotto



TATTS INSTANT SCRATCH-ITS
Scratchie sales have returned to Tatts.
Try your luck with Tatts Instant Scratch-Its (\$1-\$10) at Maldon Newsagency. We are not just a paper/magazine Lotto shop.
Come and check out our range of ever changing products.
Open for your convenience from 5.30am daily.
Use us at your convenience.

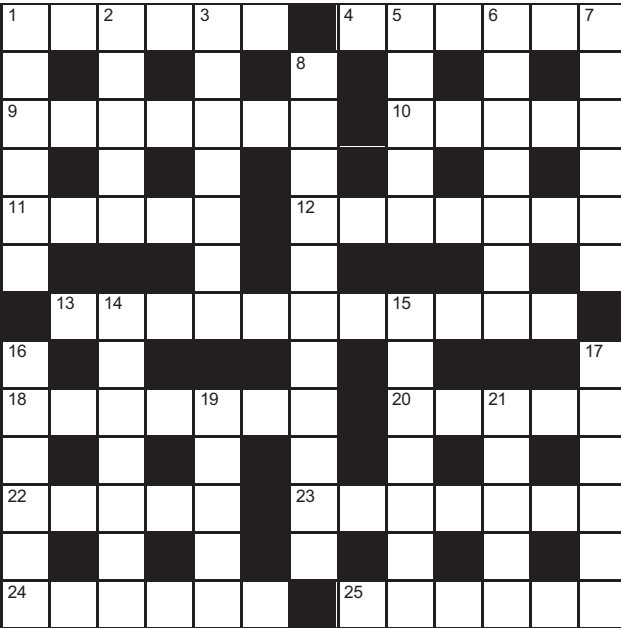
CROSSWORD Number 831

Across

- 1 Soothe
- 4 Energetic
- 9 Suggest
- 10 Invasions
- 11 Main artery in heart
- 12 Use
- 13 Basically
- 18 Routine
- 20 Large, striped cat
- 22 Demands
- 23 Winning
- 24 Complete
- 25 Road

Down

- 1 Slender tree
- 2 Singing group
- 3 Video recording
- 5 Dog breed
- 6 First letter of name
- 7 Less difficult
- 8 Hesitantly
- 14 Piece
- 15 Draw attention
- 16 Copper and tin alloy
- 17 Brilliant
- 19 One that hoards money
- 21 Steer



Solution to No. 830



Rainfall Baringhup

Week Ending 14.12.21

0.0mm

Monthly Totals So Far:

Month	2021	2020	2019
Jan	92.9	44.6	3.2
Feb	8.9	56.3	12.6
Mar	72.3	32.8	4.3
Apr	9.8	99.6	4.5
May	42.0	49.2	100.8
June	54.0	38.3	75.2
July	63.1	23.5	35.3
Aug	35.0	48.7	45.7
Sept	47.7	40.9	19.1
Oct	87.8	47.1	4.9
Nov	57.5	25.7	38.6
Dec	13.3	29.1	3.9
TOTAL	591.0	535.8	348.1

Rainfall Maldon

Week Ending 14.12.21

0.0mm

Monthly Totals So Far:

Month	2021	2020	2019
Jan	83.4	35.2	4.8
Feb	17.0	52.8	21.6
Mar	83.8	37.0	7.6
Apr	14.4	145.4	5.6
May	53.6	66.2	115.5
June	81.0	49.2	92.2
July	82.8	32.8	53.6
Aug	41.8	62.2	57.6
Sept	49.2	54.6	29.4
Oct	76.8	73.2	8.6
Nov	62.4	37.2	43.0
Dec	18.8	39.2	9.8
TOTAL	668.6	685.0	449.4

Rainfall Newstead

Week Ending 14.12.21

0.0mm

Monthly Totals So Far:

Month	2021	2020	2019
Jan	101.6	53.6	5.0
Feb	13.6	38.0	18.2
Mar	67.2	35.8	6.2
Apr	11.4	107.6	5.0
May	53.2	56.2	113.6
June	62.6	46.6	82.8
July	68.2	29.4	43.0
Aug	44.0	69.6	51.6
Sept	70.0	46.8	31.2
Oct	85.4	56.2	9.8
Nov	70.4	22.8	42.0
Dec	15.4	31.2	8.4
TOTAL	663.0	593.8	416.8

Water Storage Capacity as at 14.12.21

Site	Cairn Curran	Max ML	147,130	Current ML	98,802	% Full	67.15
Site	Malmsbury	Max ML	12,118	Current ML	10,938	% Full	92.70



The Book Wolf

Christmas is coming.

You need gifts.

0487 193 223

1/26 High Street

MALDON PONY CLUB



☆ Maldon Pony Club 2021.

LAST weekend Saturday 4 and Sunday 5 December Maldon Pony Club held its last rally of the year.

With over 20 members turning out for the weekend a lot of fun was had by young and old. The majority of members and their families camped out at the CampDraft grounds, with the club providing breakfast and lunch on the Sunday.

The camp kicked off on Saturday afternoon with show jumping and more show jumping. It was wonderful to see the riders pushing themselves and jumping higher and higher in a relaxed, safe and helpful environment. A few of our adult riders got out on their ponies and had a go as well. Sunday was also time for more show jumping, a few wandered around the cross country course and arts and crafts with some 'brow-band' making. The afternoon

finished with a fantastic lunch and our yearly awards ceremony. It was very exciting to see one of our Senior Riders MacKenzie Downing qualify and compete at the Nationals this year representing Maldon Pony Club and the State of Victoria in Eventing. MacKenzie is a wonderful role model for our club and this year won the Alan and Cheryl Lang award for Leadership and Loyalty.

Sienna Taylor won the Brian and Judy McKnight perpetual trophy for Horsemanship. It is great to see young riders acknowledged for not only their riding skill but also for their attitude, commitment and responsibility to the club, their community and their horses.

The DC's award (District Commissioner - Head of the Club) went to Holly Williams. Holly is our quiet achiever. She is always working hard

to improve her riding and skills with her horse. Most Improved Rider - Junior: Milhani Taylor and Senior: Keeley Mannix. Both these riders have continued to improve all year and are good role models to their peers. The Rising Star Award went to Alice Hogan who has just gone ahead this year in leaps and bounds. Her riding improves every time she goes out.

Encouragement awards this year were given to Francis Walls - for never giving up, Sadie Garsed for big improvements in her riding and giving everything a go and Zarielle Marsh for continuing to be brave as she overcame a bad fall and kept going!

The club has enjoyed a very successful year, all our riders have shown great resilience and flexibility through this strange and challenging year and we are looking for a fun and great 2022 at the Club

next year. As always thank you to all our volunteers, supporters, friends and family. Have a wonderful holiday break and we are excited about next year.

Nicole Funston



☆ MacKenzie and Archie.



☆ Sal the pony in the Christmas spirit.

MUCKLEFORD CRICKET REPORT



A Grade batted first against Maiden Gully at Mapson & Timmins Oval.

A 98 run opening partnership between Matt Meade (60) and Ed Gingell (23) in just 15 overs was the perfect tonic for a big score. Some big hitting from John Watson (43) and some other solid contributions saw us eventually end with a big total of 9/226.

Two very early wickets saw us take control of the game, and despite some solid Maiden Gully resistance, we were able to dismiss them for 157. Jez Priest led the way with the ball to claim 3/43, with 2 wickets apiece to John Watson, Stefan Maroudas and Ed Gingell.

A Reserve ventured up to Maiden Gully for an all important clash.

Batting first, we fell in a spot of bother at 4/42. However some very solid contributions from Marty Sharples (31), Callan Hough (30) and Hayden Coombes (21) saw us recover to a very healthy 9/153. Early wickets saw Maiden Gully stumble to 4/53. However, similar to our batting they were able to

develop some partnerships which saw them require 8 off the last over to win. Marty Sharples (3/17) was entrusted with the last over which saw it come down to Maiden Gully 1 off the last ball to win. However a catch on the final ball saw the result end in a tie!

The Gold B Grade team hosted Guildford at North Muckleford.

Losing the toss and being forced to field our guys took a bit of a hammering early on. However to Gold's credit they were able to take the last 7 wickets for just 8 runs. Harry Harvey was the star with the ball with 4/10, with Teague Callaway (2/0) and Fionn Kennedy (2/43) the other multiple wicket takers. Nev Cooper was able to guide the Gold team to an 8 wicket win making 42*.

The Maroon B Grade team made the trek over to Hepburn.

Batting first, it was pleasing to see some solid contributions with the bat with Toby Chapple (35), Brent McGuire (34) and David Leathem (30) all chipping in with the bat as we compiled 8/148. Things were looking ominous with the ball as Hepburn were cruising at 2/111. Enter Craig Tingay who turned the game on its head to claim 6/26 as Hepburn lost their last 8 wickets for just 8 runs to be dismissed for 119.

The Under 13 Maroon team played Castlemaine Blue at the Western Reserve.

Bowling first, they did well to restrict Castlemaine Gold to 88. Martha Gross, Florence Layne and Jack Smith were the wicket takers. In reply everyone got amongst the runs ending their innings on 2/155. Jack Smith top scored with 22 but received great support from Eva Gross (19), Clyde McKechnie (15) and Florence Layne (13).

The Under 13 Gold team hosted Newstead.

Batting first, we ended our innings with 102 with Jonah Edmonds top scoring with 16. Tom Hamilton (12). Abe Isdale (13) and Miles Crilly (10) also batted well to push the score over 100. In reply Newstead ended their innings at 87. Abe Isdale was the best of the bowlers taking 2/11 with other wicket apiece to Tom Hamilton, Anuwa Featherstone and Jonah Edmonds.

This week's fixture:

A Grade vs Newstead @ Newstead
A Reserve vs Newstead @ Mapson & Timmins Oval
B Grade Maroon vs Castlemaine Blue @ Campbells Creek
B Grade Gold vs North Castlemaine @ Wesley Hill
Under 16s - Bye
Under 13 Maroon vs Harcourt @ Harcourt
Under 13 Gold vs Hepburn @ Hepburn
Brett Cole

MALDON TENNIS CLUB REPORT



Continued from page 24

Our serving and ball placement is getting better each week and after the break we will be back on fire. Thank you to everyone for your support, volunteering and help for the first half of the season. Have a great Christmas holiday and we will see you in the New Year.

Nicole Funston

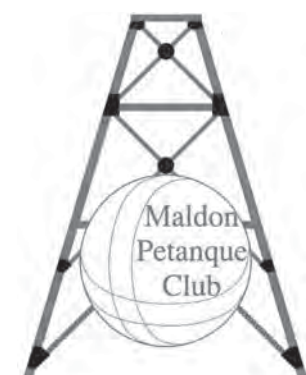
☆ **Left:** Section 3 Maggie, Archie, Harrison and Francis.



MALDON PÉTANQUE CLUB



☆ Geoff McLennan (on the right) presenting Steve Phillis with his 'Most Improved Player 2021' award. Steve will be the first name on the perpetual trophy, the McLennan Shield, which honours the contributions to the club by Geoff and Marion. Club Vice President Beverley Forsyth (pictured) was MC for the annual awards.



AFTER a year of uncertainty through the pandemic and a variety of weather conditions, last Sunday brought about the end of the 2021 Petanque season.

The day opened with the presentation of annual trophies. Because of the COVID confusion trophies for the 2020 season had not been presented, so they were done retrospectively. The Club Champion for 2020 was George Forster and the Most Improved Player was Matt Loake. It was then time to announce the awards for 2021. The Club Champion was our Club President Andrew Leckie, runner up was Steve Phillis and coming third was Chris Przygoda. The inaugural 'McLennan Trophy for the Most Improved Player' was won by Steve Phillis. A



☆ Barry Droney getting into the Christmas mood.

special award was made to Vice President Beverley Forsyth for services rendered.

There were no official games, but in beautiful sunshine we were able to show our skills in a game of fast petanque played over 12 ends. The winner of this highly competitive game was Terry Hunter closely followed by Barry Droney.

After all of the above we moved to St Brigid's hall to

share a BBQ and fellowship to wind up another successful season.

Next season will commence on Sunday 9 January 2022 at 2pm on the St Brigid's pistes 'weather permitting'.

The Maldon Petanque Club wishes all petanquers and their supporters a peaceful Christmas and an excellent 2022.

Geoff McLennan

MALDON BOWLING CLUB



LAST Wednesday, 8 December, our club held a very successful monthly district Triples Event.

Twelve teams competed over three games of 10 ends. The major sponsor for this event was Warral Maldon, the local honey producer. Lindsay Callaway, owner and managing director, donated a tub of delicious honey for one of the raffle prizes. Lindsay drew the winning raffle tickets on the day and made the presentation of his excellent honey. A big thank you also to Maldon Quality Butchers for providing another great meat tray for first prize.

Saturday Pennant Results

On Saturday, 11 December, Maldon played away to Maryborough Highland Black. Kevin filled in as skipper for Eric. This team lost 17 to 20 but did win 11 of the 21 ends. A great effort.

Peter Seamer filled in as skipper and his team of



☆ Warral Maldon owner Lindsay Callaway and club president Peter Sedgwick showcasing some of the products available.

Annette, Melissa and Darrin had a loss but did win 10 of the 21 ends.

Peter Sedgwick's team of Ellen, Phillip and new team member Sean had a win 30 to 26. A great game by Sean in his first Pennant game for Maldon and first game on grass. On Saturday, 18

December, we host Avoca at Maldon. Good luck Maldon!

Peter Sedgwick

Maldon & District
Community Bank® Branch

● **Bendigo Bank**

The Maldon & District Community Bank is a Platinum Sponsor of the Maldon Bowling Club.

MALDON TENNIS CLUB REPORT



☆ Junior 1, Wilbur.

THIS week was the last week of tennis until after the holidays.

Everyone has had a great start to the season and although the score sheet hasn't shown the results we are aiming for, we are getting better every week and everyone's skills are continually improving. This week saw the Junior 1's beaten by Newstead and the Section 3 team losing to Castlemaine.

Continued on page 23

CASTLEMAINE FINANCIAL SERVICES

- Accounting & Taxation
- Business Services
- Financial Planning
- SMSF Advice

12 Mostyn Street, Castlemaine. Phone: 5470 6100



FUELS
AND
LUBRICANTS

ROBERT COX MOTORS
HIGH STREET, MALDON, 3463

Robert Cox

SPECIALISING IN MECHANICAL REPAIRS

- Lubrication Service • Smash Repairs • Tyres
- Windscreen Replacement • Batteries • Parts
- Disc and Drum Brake Machining
- Wheel Alignments

* LICENSED MOTOR VEHICLE TESTER *

TELEPHONE 03 5475 2381



BRACKEN LAWYERS

A boutique legal practice specialising in:

- Conveyancing • Property Law
- Commercial Leases • Guarantee and Loan advice
- Business Sale and Purchases

Based in 'The Hub' 3/233 Barker Street, Castlemaine and servicing Maldon by appointment.

Phone 5470 5062 or email ian@brackenlawyers.com
www.brackenlawyers.com