

Tarrangower Times

Est 1858

www.facebook.com/TarrangowerTimes

www.tarrangowertimes.com.au

Friday, February 4, 2022

Inside
this
week



Neighbourhood
Centre
Resignation.
Page 3.



The Maldon
Classic.
Page 4.



Know Your Local
- Janet Trudgeon.
Page 9.

School's Back!



☆ L-R: Crossing guard Ray Stevenson, Freycie, Florence, Frances and Primrose.

Castlemaine family loses everything

Kelly and Dustin's rental property in Castlemaine became unliveable after the floods last Friday.

Kelly, who had spent the morning at a specialist appointment for her youngest son, went to the shops in Castlemaine for 15 minutes to buy supplies for the start

of school, only to return home to find every room completely water-logged.

The family of five, their two dogs and three birds had nowhere to sleep and other than a few items of clothing rescued from high cupboards, had lost all of their belongings.

Kelly contacted the SES and Carolyn Ross, Acting Housing Worker at Mount

Alexander Shire Council who began ringing businesses in the area to find the family accommodation. After an arduous search Carolyn Ross, Executive Manager at the shire, contacted Jamie Hefferman from Maldon Getaways who had a property available for the family and their pets.

Kelly told the *Times*, "We're waiting for the insurance

company to come on Friday and assess the damage. We basically don't have anything. Council has paid for five nights here, but after that we're homeless. We've been talking to our real estate agent and they're trying to find us somewhere to rent that's fully furnished.

"We're only three or four months off having our house

built in Campbells Creek. We'll just have to wait and see what the insurance company says.

"It's been crazy and we're just trying to hold our composure for the kids. They're tired and had to go back to school on Monday, with our youngest starting his first day of prep.

"Two of our kids have autism, in-fact we got the diagnosis for the youngest earlier that day, so it's been a bit of an emotional rollercoaster, especially because they don't have any of their toys or comforts.

"We're lucky though. We're safe and everyone's been really supportive and hopefully

Continued on page 3



Artist: Simon Dow



Artist: Roz Avent

Maldon Portrait Prize 2022 I Be Human

Painting, Drawing and Mixed
Media Finalists Exhibition:
6 - 13 February 2022

Photography Finalists Exhibition:
20 - 27 February 2022

www.maldonartistnetwork.org.au

EDGE Galleries 35 - 37 Main St Maldon
10am - 4pm

I Be Human Online exhibition and People's
Choice Award audience voting:
1 March - 15 June 2022

Maldon Artist Network



Community Diary

If you have a community event that you would like publicised in this Community Diary, please email: karen@tarrangowertimes.com.au or send details to us at PO Box 18 Maldon 3463, or drop a note into the letterbox in the office door to have it listed.

This is a free community service.
It is a good idea to advertise closer to the event.

EVERY DAY EXCEPT MONDAY

LIONS CLUB OP SHOP, 10am to 2pm. Enq: Jenny 0407 158 833.

FIRST SUNDAY OF THE MONTH

CASTLEMAINE FARMERS MARKET, 9am to 1pm Western Reserve, Forest Street. Enq: www.castlemainefarmersmarket.org or 0455 332 692.
MALDON PONY CLUB RALLY at the Maldon Campdraft grounds at 9.30am for gear checks for a 10am kick off. Enq: Kira Chalmers 0407 140 580.

EVERY SUNDAY

MALDON MUSEUM, Shire Gardens, 11.30am - 2pm. Admission \$2.50 adults, children free.

EVERY SUNDAY FORTNIGHT

MALDON PÉTANQUE CLUB games every second Sunday at St. Brigid's at 1.30 for a 2pm start. Enq: Sandy Noble 0429 006 130. Andrew Leckie 5400 1054.
SOCIAL PÉTANQUE is played on the Penny School pistes every second Sunday, alternating with MPC, at 1.45 for a 2pm start, unless rain is bucketing down, or it is over 30°. Enq: 0459 093 452.

SECOND SUNDAY OF THE MONTH

ATHENAUM LIBRARY, 97 High Street, Maldon. Open 10am-1pm includes book sales. Tina Fratta 0437 094 469.
MALDON MARKET: Hand Made, Home Grown, 9am – 1.30pm. Bill Woodfull Recreation Reserve.
THE MALDON VINTAGE MACHINERY & MUSEUM is a haven for machinery enthusiast's before and after the industrial revolution, but with more. Open 10am-4pm. Entry free - donations welcome. More info: Peter 0408 146 537.

LAST SUNDAY OF THE MONTH

CASTLEMAINE REPAIR CAFE, 10am - 1pm at Castlemaine Community House ,30 Templeton St. Enter from back door. Bring along broken electrical, general sewing repairs and maybe a cuppa and weekend paper in case you have to wait a while. No kitchen because of COVID. Gold coin donation. Learn to repair.

EVERY MONDAY

LAP SWIMMING, Maldon Swimming Pool, 6pm - 7pm.
OCCASIONAL CHILDCARE, Maldon Neighbourhood Centre 9.30am-2.30pm. Enq. 5475 2093 or info@maldonnc.org.au.
ATHENAEUM LIBRARY, High Street, Maldon. 2-4pm. Suzette Phillips 0429 776 893.
MALDON BRIDGE CLUB at the Maldon Hotel, 1.15pm - 4.30pm. New players welcome including solo players. Enq: Danny Murphy 0430 733 782.
SOCIAL WALKS, No booking required, all welcome! Meet at the Neighbourhood Centre, 9.30am-11am. \$1 donation for cuppa.

SOCIAL GOLF – 8.30am – 9 holes, free for members or \$10 green fees. Enq: maldongolf4u@gmail.com or Gay Reid 0413 013 766.

FIRST MONDAY OF THE MONTH

CRYPTIC CROSSWORD MORNINGS from 10am MNC Community garden, starts 7 Feb.

SECOND MONDAY OF THE MONTH

THE MALDON GARDEN, FLORAL ART AND CRAFT CLUB, 2pm. Enqs: Carmel 0417 014 763.

THIRD MONDAY OF THE MONTH

CRYPTIC CROSSWORD MORNINGS from 10am MNC Community garden, starts 7 Feb.
THE MALDON GARDEN, FLORAL ART AND CRAFT CLUB, 2pm. Enqs: Carmel 0417 014 763.

MOSTLY LAST MONDAY OF THE MONTH

NIGHT SKY APPRECIATION SOCIETY, Meet under the oak at Maldon Neighbourhood Centre. Mon: 31 Jan, 28 Feb, 28 Mar, 8.30pm; 2 May, 30 May, 27 Jun, 7.30pm.

EVERY TUESDAY

AQUA AEROBICS, Maldon Swimming Pool, 6pm. Cost \$9.50 (or \$6 with season pass).
COMMUNITY TRANSPORT SERVICE. Book the day prior for your door-to-door service. Trips within and to Maldon & Castlemaine in the morning, fortnightly trips to Maryborough and Kangaroo Flat. Phone 5475 2093. \$3 one way, \$5 return. More info: www.maldonnc.org.au/community-bus.
CONVERSATION HOUR: meet, greet & chat, Coffee & conversation in the garden. Tuesdays 10.30 - 11.30am. All welcome, free. Maldon Neighbourhood Centre.
MAH JONG for seniors 10am-1pm at Maldon Community Centre. Beginners welcome. Enquiries: Kerry 0407 738 855.
MALDON BOWLING CLUB, at 10am, as long as COVID restrictions allow.
MALDON BRISK WALKING GROUP, No booking required, all welcome! Meet at Maldon Neighbourhood Centre 7.30am - 8.15am. No cost.
MALDON SOCIAL TABLE TENNIS, 1.30pm-3.30pm, Maldon Community Centre. Cost \$10 subscription to Maldon Seniors, \$2 donation on the day. Enq. Anne 0425 859 662.
MALDON CROQUET CLUB, 9.30am. New members welcome. Enq. Damien Kennedy 0428 130 764.
NORDIC POLE WALKING (during school terms), 9.30am at Castlemaine Botanical Gardens. Further info and bookings 5479 1000.
YOGA AND RELAXATION, Maldon Neighbourhood Centre Hall. Open your body and mind with yoga and relaxation. First class free. Tuesdays 6pm – 7.30pm. \$12 casual.

FIRST WEDNESDAY OF THE MONTH

DIABETES SOCIAL GROUP, 2 – 3pm. \$2 includes tea & coffee. Info: Jo Ann 0412 640 818.
NUGGETTY LAND PROTECTION GROUP meeting. For further info contact Christine Fitzgerald – ckfitz5@bigpond.com – 0419 347 408.

EVERY WEDNESDAY

ATHENAEUM LIBRARY, High Street, Maldon. 2-4pm. Enqs Suzette Phillips 0429 776 893.
CANASTA for seniors 10am at Maldon Community Centre. Beginners welcome. Enquiries: Lyn 0409 566 551.
COMMUNITY LUNCH 12.00 noon, Maldon Community Centre, \$7 donation.
EASY STEPS TO FITNESS, Fitness through simple dance steps. MNC 9am – 9.45am. \$10. Bookings: Sean 0419 210 043.
HATHA YOGA, Gentle yoga class. All levels of ability. Maldon Neighbourhood Centre 5 – 6.30pm. \$15/casual or \$120/10 classes. Bookings: text Wendy 0490 064 084.
LAP SWIMMING, Maldon Swimming Pool, 6pm - 7pm.
MALDON MEN'S SHED, 10am to 4pm at rear of Vintage Machinery Museum (accessed from Phoenix Street). All welcome. Contact Barry Murfett 0403 352 753. (Note: Closed on days of Total Fire Ban or over 38°).
MALDON MUSEUM, Shire Gardens, 11.30am - 2pm. Admission \$2.50 adults, children free.
NORDIC POLE WALKING (during school terms), 5.30pm in Maldon. Further info and bookings 5479 1000.
THE MALDON VINTAGE MACHINERY & MUSEUM is a haven for machinery enthusiast's before and after the industrial revolution, but with more. Open 11am-3pm. Entry free - donations welcome. More info: Peter 0408 146 537.
YOUNG AT HEART PLAYGROUP, Meet other local families in a fun and friendly environment. Wednesdays 10am – 11.30am at MNC. No cost.

EVERY FOURTH WEDNESDAY

MALDON CEMETERY FRIENDS WORKING BEE, 9.30am - 11.30am. Please come out and help get our historic cemetery clean, weed free and blooming! Our cemetery grounds and buildings need a little care and attention from some willing helpers on a regular basis. Training, equipment and morning tea provided. BYO Hat, sunscreen, insect repellent and especially gardening gloves.

EVERY THURSDAY

AQUA AEROBICS, Maldon Swimming Pool, 6pm. Cost \$9.50 (or \$6 with season pass).
GENTLE TAI CHI, Maldon Neighbourhood Centre 10.30-11.30. Starts 3 Feb. \$5 donation. Bookings: Jenny 0417 475 270.

MALDON BOWLS CLUB, Bowls practice anytime Thursday until dark.
MALDON BRIDGE CLUB, 12.45pm to 4.30pm at the Maldon Hotel. New players welcome including solo players. Enq: Danny Murphy 0430 733 782.
MALDON CROQUET CLUB, 9.30am. New members welcome. Enq. Damien Kennedy 0428 130 764.
MALDON CHESS CLUB, 10.30am. Do you play? Come along. Do you want to learn? Come along. For enquiries contact John 0438 012 076.
NORDIC POLE WALKING (during school terms), 9.30am at Castlemaine Botanical Gardens. Further info and bookings 5479 1000.
TECH HELP TO STAY CONNECTED Be Connected program and supported by friendly volunteer digital mentors. No experience needed! Thur 9.30 – 11.00am. Starts 3 Feb. Maldon Neighbourhood Centre. FREE.
OASIS KID'S CLUB, 3.20pm-4.45pm Maldon Baptist Hall, Edward Street. All primary aged children welcome. Free. Enq Gavin & Julie 5475 2338 or 0458 084 728.

SECOND THURSDAY OF EVERY MONTH

FREEMASONS MALDON meet at 7.30pm. Enq: Peter 5472 2202.

THIRD THURSDAY OF EVERY MONTH 2022

MALDON GOLDEN MOVIES will resume fantastic films from Thursday 17 February 2022, Subject to COVID regulations from then on. BYO smart phone and green Vax tick to scan QR code. Maldon Community Centre, Francis Street

EVERY FRIDAY

ATHENAEUM LIBRARY, High Street, Maldon. 2-4pm. Enqs Suzette Phillips 0429 776 893.
CHAIR YOGA, For people who require special consideration. Maldon Neighbourhood Centre, 11am – 12 noon. Starts 4 Feb. \$15/casual or \$120/10 classes. Bookings: text Wendy 0490 064 084.
COMMUNITY TRANSPORT SERVICE. Book the day prior for your door-to-door service. Trips within and to Maldon & Castlemaine in the morning, fortnightly trips to Maryborough and Kangaroo Flat. Phone 5475 2093. \$3 one way, \$5 return. More info: www.maldonnc.org.au/community-bus.
HATHA YOGA, Gentle yoga class. All levels of ability. Maldon Neighbourhood Centre 9-10.30am. \$15/casual or \$120/10 classes. Bookings: text Wendy 0490 064 084.
LAP SWIMMING, Maldon Swimming Pool, 6pm - 7pm.
MALDON MUSEUM HISTORY RESEARCH CENTRE, 10am - 1pm.
MALDON SOCIAL WALKING GROUP, No booking required, all welcome! Meet at the Neighbourhood Centre. Fridays 9.30am - 11am \$1 donation for cuppa.
IMT - ARE WE BEING HEARD? Between 9am and 11am. You can listen to us on your phone you know. Listen on the TuneIn Radio App- MAINfm 94.9, or on your computer <http://mainfm.net>, OR SMS during the program on 0488 863 186. Please SIGN Your SMS.
SOCIAL GOLF – 8.30am – 9 holes, free for members or \$10 green fees. Enq: maldongolf4u@gmail.com or Gay Reid 0413 013 766.
NORDIC POLE WALKING GROUP, for experienced walkers (during school terms), 9.30am at Castlemaine Botanical Gardens. Further info 5479 1000.

SECOND FRIDAY OF EVERY MONTH

MALDON RSL SUB-BRANCH Monthly meeting in the Maldon RSL Hall behind the Athenaeum Library at 3pm. All Service and ex Service members are welcome to attend. No meeting in January.

LAST FRIDAY OF EVERY MONTH

MAREE EDWARDS LISTENING POSTS are postponed until further notice. My office is still available for assistance, please contact us on 5410 2444 or maree.edwards@parliament.vic.gov.au.
TARRANGOWER DEMENTIA ALLIANCE, meetings from 10.30 – 12.00, Maldon Athenaeum Library.

EVERY SATURDAY

ATHENAEUM LIBRARY, High Street, Maldon. 9.30am - noon. Enqs Suzette Phillips 0429 776 893.
MALDON MEN'S SHED, from 9am to 12pm at rear of Vintage Machinery Museum (accessed from Phoenix Street). All welcome. Contact Barry Murfett 0403 352 753. (Note: Closed on days of Total Fire Ban or over 38°).
MALDON CROQUET CLUB, 9.30am. New members welcome. Enq. Damien Kennedy 0428 130 764.
THE MALDON VINTAGE MACHINERY & MUSEUM is a haven for machinery enthusiasts before and after the industrial revolution, but with more. Open 10am-4pm. Entry free - donations welcome. More info: Peter 0408 146 537.

STARTING SATURDAY 5 FEBRUARY

HOMESICK EXHIBITION, running 10am-4pm each weekend in February at the Newstead Arts Hub.

Tarrangower Times

Your Paper, Your Stories, Your News!

Est 1858

Available from: Maldon Newsagency, Castlemaine Newsagency, Newstead Country Store and Baringhup General Store.

4/93 High Street (PO Box 18), Maldon Vic 3463.
Tel: (03) 5475 2256
Email: editor@tarrangowertimes.com.au
www.tarrangowertimes.com.au
www.facebook.com/TarrangowerTimes
www.instagram.com/tarrangower_times

Other contact details:
Jade Jungwirth (Editor) 0408 594 246 or jade@tarrangowertimes.com.au
Karen Sloan (Design | Accounts) 0404 357 556 or karen@tarrangowertimes.com.au
Kerry Cain (Advertising) 0419 102 723 or kerry@tarrangowertimes.com.au

Guaranteed Office Hours:
Mon: 9am - 11am, Tues: 9am -12pm, Wed: 9am - 1pm.

ADVERTISEMENT LODGEMENT TIMES:
• Classifieds - 12noon Tuesday.
• Casual Display - 12noon Tuesday.

CONTRIBUTED ARTICLES:
• Community and News 12noon Tuesday.
• Late notices such as Births and Deaths by 10.30am Wednesday.

The *Tarrangower Times* is a member of the Victorian Country Press Association. The *Times* is owned by Tarrangower Times Pty Ltd, edited by Jade Jungwirth and printed at Express Print, Morwell.

Copyright in this publication is held by Tarrangower Times Pty Ltd. Reproduction of any portion including advertisements and photographs without permission is not permitted and may constitute an offence. Copyright © 2022.

Castlemaine family loses everything



☆ The outside of Kelly's rental property in Castlemaine.



☆ The family of five had to wade through the water to try and salvage their possessions.



☆ The insurance company will access the property on Friday, but Kelly isn't hopeful much can be saved.

the furnished house comes through.

“Carolyn at the Council has been amazing, she’s rung daily to see if we need anything. She’s really gone above and beyond for us.”

Many other locals and businesses in Castlemaine, experienced loss and damage due to the severe weather front last Friday and local council has been working closely with affected residents and local emergency service team to assist.

A Mount Alexander Shire spokesperson told the *Times*, “Our staff have been busy assisting with the clean-up, attending to requests relating to incidents such as wash-out of gravel roads, and supporting a family who have been displaced by flooding of their home.

“Since Friday, council staff have been busy undertaking assessment and repairs, and working with impacted residents to ensure they are safe.

“Thank you to everyone who worked tirelessly over the weekend to ensure our community’s safety.”

RATs for school children



THE 2022 school year is now underway, with Victorian students back in the classroom despite rising COVID numbers.

In order to keep schools operating during the pandemic, students, staff and school communities across Victoria are implementing a full suite of COVIDSafe measures including: surveillance testing, improved ventilation, high rates of vaccination and comprehensive workforce planning in place to minimise disruption to learning.

This week schools have received more than six million rapid antigen tests for the first fortnight of surveillance testing, to try and help stop the spread of coronavirus in schools and early childhood settings before it reaches the classroom.

This surveillance testing is strongly recommended for all primary and secondary school students and staff, twice-weekly at home before school, while students and staff at specialist schools are recommended to test five days each week due to the higher

Continued on page 8

Neighbourhood Centre resignation



☆ Amy Atkinson, Co-ordinator of the Maldon Neighbourhood Centre has tendered her resignation.

THE much loved, Maldon Neighbourhood Centre (MNC) Co-ordinator, Amy Atkinson, has tendered her resignation.

“We’re not leaving town,” said Amy. “It’s just time. I’m not sure what I’ll do next. At the moment I’m studying my Masters in Community, Planning and Development so I’ll have more time and space to do that.

“It has been fantastic working here. It’s been a real privilege to work with the volunteers, staff and community.”

Some of Amy’s most memorable projects during her many years at the centre are; the Maldon Market, the Community Bus and the continuation and growth of the Occasional Childcare, as well as all the amazing education and health programs the centre provides.

President of the MNC Board, Carolyn Palmer, told the *Times*, “Amy is so passionate about community development, it’s her life’s blood (well that and her children). She has so much drive and integrity. She’s amazing at networking and is so committed to the community of Maldon. She has made the Neighbourhood Centre so welcoming, and wants to make sure everyone has every opportunity.

“Amy has handled the flips and changes of COVID so well and done everything she can to ensure programs run when possible.

“I’ve had people coming up to me in the street, asking if she’s leaving. I tell them, the centre will still be there,

with someone else. It won’t be Amy, it’ll be different, not more or less.

“We have a really well-placed board at the moment, we’re like a well oiled machine. This will really help with the transition.”

Applications are open for the position of Maldon Neighbourhood Centre Co-ordinator. Visit www.ethicaljobs.com.au/members/Maldonnc/centre-coordinator-maldon to apply.

MALDON

Quality

BUTCHERS

Locally farmed

bio-dynamic beef & lamb

Free local delivery

Meat voucher is on hold until further notice.

19 Main St. Ph. 5475 2271

STEVE BARTY GAS

Proudly servicing Maldon and surrounding districts in:

Domestic LPG deliveries • LPG appliances

Forklift gas • Industrial and hospitality gases

BP oils and greases

For all your LPG needs, contact Steve Barty

5472 1262 or 0417 524 713

48

Main

Local Bar

Local Beer

Live Music

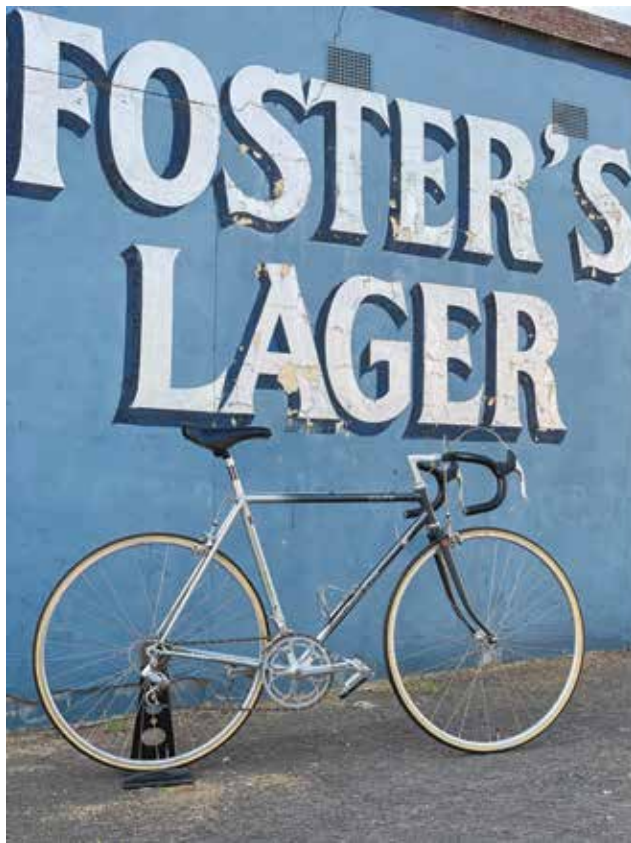
Open: Every Thursday, Friday, Saturday & Sunday

Friday, February 4, 2022 • TARRANGOWER TIMES 3

The Maldon Classic... a celebration of the steel bicycle



☆ This bike at the Maldon Railway Station is a very rare 1947 Malvern Star, top-of-the-line 'Five Star' model.



☆ In front of the Fosters sign at the Kangaroo Hotel in Maldon is a 1985 Malvern Star Equipe in showroom condition.

MALDON will once again host an event where classic steel bicycles are displayed and ridden.

Whether it is an early piece

of cycling history from the 1800s, or a more recent steel frame from those artisans still producing steel bikes, it

is hoped there will be a solid representation across the eras.

On Saturday 5 March 2022 from 10.30am until 4pm the Community Centre in Francis Street will be filled with classic bicycles. The public are welcome to take in the history and the stories associated with each bicycle. There are many avid collectors locally who have worked hard to pull this event together as a fundraiser for the Maldon Hospital.

Peter Strang, one of the members of the organising group told the *Times*, "We are delighted that the Community Bank has again assisted us to support the hospital. Alongside Mount Alexander Shire's help with planning, traffic management and promotion, we can be proud that cycling is again helping people be active, fit and great contributors to what is the wonderful lifestyle around Maldon"

Riders will take to the road on Sunday morning from 9.30am to ride either a 35 kilometre loop or a 52 kilometre loop, both coming back into town via Hamilton's Crossing.

Jim Knight, the Ride Director said, "Maldon and surrounds have so much to offer for cycling, from celebrating the history of bicycles to the natural beauty and opportunities that exist for road riding, gravel riding and mountain-biking. We hope that this supported ride on the Sunday is the start of a permanent fixture on the Maldon calendar."

As part of the preparation for this event, the Maldon Museum & Archives have been very supportive in digging out the history of cycling around the district. If any locals have any information about either the bike shop, once located where the current Lolly Shop trades, or the Tarrangower Bicycle manufacturing business run by William Meade from 1906, The Maldon Classic would be delighted to hear from them. Ideally, they would love to see a Tarrangower Bicycle resurrected from someone's shed and put on display!

Full details can be obtained from the event website www.themaldonclassic.org or on Facebook by searching The Maldon Classic.

Shelbourne silos



☆ The unveiling of the plaques commemorating the history of the Shelbourne Railway complex.

celebrating the history of the Shelbourne Railway Station.

The plaques are part of Nuggetty Landcare Groups historical projects, including producing calendars and conducting railway walks from Nuggetty to the silos.

Jane Mitchell, an active member of the group for the past 14 years, who lived directly across from the silos, was particularly passionate about keeping the silos intact and unpainted.

Treasurer of Nuggetty Land Protection Group, Christine Fitzgerald, told the *Times*, "Jane and a few others put together a submission to Loddon Shire Council to have plaques made, detailing the history of the railway station. After Jane died last year, a

Continued on page 13

LAST Saturday a large crowd gathered at the Shel-

bourne silos for the unveiling of a series of plaques,

A bank with the lot.
For locals anywhere

We deliver the products and technology you'd expect from a big bank, plus the personal service you wouldn't.

As one of Australia's biggest banks, our heartland remains firmly local. As does our focus on you and the quality banking products you need.

Feel good about who you bank with. Try Bendigo.

Find out more. Call 5475 1747 or search Bendigo Bank Maldon & District.

BANK LOCAL



Bendigo Bank

Community Bank Maldon & District

Bendigo and Adelaide Bank Limited ABN 11 068 049 178, AFSL/Australian Credit Licence 237879 A1455027 OUT_2313216, 24/08/2021



Kalamazoo Resources Limited is a gold exploration company with a primary focus on identifying commercially viable gold deposits within the central Victorian Goldfields consisting of three key projects.

- 1. Castlemaine Gold Project is located ~120km NW of Melbourne. Granted licences (EL6679, EL6752 and EL7112) which lie East and South of the Castlemaine township, covering most of the historic Castlemaine Goldfield.**
- 2. South Muckleford Gold Project is located ~150km NW of Melbourne. Granted licences (EL6959 and EL7021). This project is located only 10km from the Castlemaine Gold Project.**
- 3. Myrtle Gold Project is located ~135km NW of Melbourne. Granted licence (EL7323) located just 30km south of the Fosterville Gold Mine.**

Kalamazoo is planning to conduct low-impact gold exploration activities within these project areas.

To discuss any of our projects or if you require any further information, please visit <https://kzr.com.au/castlemaine-gold/> or Luke Mortimer on 03 9988 7796 or luke.mortimer@kzr.com.au.



- Home Automation
- New and Heritage homes
- Solar Systems
- Home Safety checks
- Security Cameras
- Heating and Cooling

Phone Pat Cummins
0400 066 932



We're upgrading the Bendigo and Echuca lines

As part of Victoria's Big Build, Regional Rail Revival are building three new stations and upgrading track and signalling to enable more frequent services to Echuca, Epsom and Eaglehawk.

Train disruptions: Coaches replace trains in both directions

Swan Hill Line	8 to 16 Feb	Bendigo to Swan Hill
	17 to 27 Feb	Southern Cross to Swan Hill
Bendigo Line	17 to 27 Feb	Southern Cross to Bendigo
Echuca Line	17 to 27 Feb	Southern Cross to Echuca

Dual naming of Australia Day - Survival day



☆ Australia Day Award winners, from left to right – Billy Lister, Youth Citizen of the Year, Kerry Reid – Citizen of the Year, Mount Alexander Shire Mayor Bill Maltby, Kelly Skinner – Senior Citizen of the Year, Fionna Allan, representing Gold Sounds Music Conference - Community Event of the Year.

IN 2019, under the leadership of Dja Dja Wurrung Elders, Mount Alexander Shire Council made the decision to formally dual name events held on 26 January as 'Australia Day – Survival Day', acknowledging the issue of how celebrations on this day impact First Nations people, and to provide a platform for education and healing through truth-telling.

Dja Dja Wurrung Elder, Uncle Rick Nelson said the collaboration between Council and the Dja Dja Wurrung community was an important step in working together towards reconciliation.

Mr Nelson said, "We all live here together so let's celebrate together, not only Australia Day but all that Aboriginal nations have survived."

Mount Alexander Shire Mayor, Councillor Bill Maltby said the event held in Castlemaine on 26 January was a fantastic opportunity for the community to come together.

"Our Australia Day – Survival Day event gave our

community the chance to reflect on our nation's history, which began with the First Australians tens of thousands of years ago," said Mayor Maltby.

"Thank you to everyone involved for their contribution to the day, and also to the wider community for coming along and being part of this."

This year's winners of the Mount Alexander Shire Australia Day Awards are:

- **Citizen of the Year;** Kerry Reid for her work as a wildlife rescuer, who through her gentle attention and dedication, has helped many sick, injured, and abandoned animals, nursing them back to health to be released into the wild. Passionate about caring for wildlife, Kerry has rescued animals for organisations such as Wildlife Victoria and the Wildlife Rescue & Information Network, along with answering calls for help from shire residents, vets, local police, and Council.

- **Youth Citizen of the Year;** Billy Lister who is an emerging community leader, with a vision to make the shire a better place for young people. With a wealth of volunteer experience under his belt, including Council's Youth Advisory Group, Young Makers Market, COscars Youth Film Festival, and much more, Billy is an ideas man who's not afraid to roll up his sleeves and make positive change happen.
- **Senior Citizen of the Year;** Kelly Skinner who is a compassionate and community-minded individual, Kelly Skinner is a whiz when it comes to pulling together an event, particularly managing the popular Newstead Live Music Festival. She is also a funeral celebrant, considerately and kindly facilitating the celebration of dearly departed loved ones.
- **Community Event of the Year** is, Gold Sounds Music Conference which brought together the Victorian regional music community for three days in



☆ Dja Dja Wurrung Elder, Uncle Rick Nelson at the 2022 Mount Alexander Shire Australia Day – Survival Day community event.

November 2021. The conference supported venues, young people, musicians and the region's music industry, to develop necessary skills, networks and strategies to recover from the impacts of COVID-19, and carry that increased capacity into the future.

Mayor, Bill Maltby, congratulated the winners and nominees for their work.

"By presenting these awards, we celebrate the contribution that inspiring Australians have made to their communities. We take this time to reflect on how we can all follow their example and each contribute to creating a better society," said Mayor Maltby.

"Although we could only have one winner for each category, we'd like to acknowledge all of our 2022 nominees for their very generous contributions to our shire," he said.

Along with the presentation of the awards, four people took the pledge to become Australian citizens at the Australia Day – Survival Day community event.

"Congratulations to all our newest citizens' on the commitment they have made," said Mayor Maltby.

"Choosing to become an Australian citizen is a significant expression of pride in being part of our country's dynamic and diverse society."

To watch the livestream of the community event visit youtube.com/c/MountAlexanderShireCouncil.

20 Dead Canaries & 1 Song of Love



THE *Tarrangower Times* recently received a letter from former Maldon resident Jim Aubrey, offering free copies of his new book to three lucky *Times* readers.

After a 20-year hiatus, Jim has written a book of poetry, *20 Dead Canaries & 1 Song of Love*, which publisher, Boolarong Press say, "Is relevant, rebellious and uniquely tuned to our troubled times."

Jim said, "This book may even be more important than the political book I edited in 1998, 'Free East Timor', because there are so many struggles for freedom remaining in our world.... One thing I learned from experience - no subjugated sovereign nation-state will ever cease its cry for freedom."

Please email jade@tarrangowertimes.com.au if you are interested in a free copy.

During these difficult times...



We are still here to help you,
24 hours a day, every day



12 Campbell Street, Castlemaine
Ph 5470 5951 all hours
www.mafunerals.com.au

ADVERTISEMENT



Federal Member for Bendigo

**LISA
CHESTERS MP**



PO Box 338 Bendigo 3552
Cnr. Williamson & Myer Sts, Bendigo 3550

T: 03 5443 9055 • F: 03 5443 9736
E: Lisa.Chesters.MP@aph.gov.au

www.lisachesters.org

[@LMChesters](https://twitter.com/LMChesters) • [@LMChesters](https://facebook.com/LMChesters)

Authorised by L. Chesters, ALP, 16 Myers Street, Bendigo

ADVERTISEMENT

**Maree
Edwards MP**

STATE MEMBER FOR BENDIGO WEST

Listening Posts are postponed until further notice.

My office is still available for assistance, please contact us on 5410 2444 or maree.edwards@parliament.vic.gov.au.

Suite 3, 16 Lockwood Road
(PO Box 1238),
Kangaroo Flat, Vic 3555

P: 5410 2444

www.mareeedwards.com.au

Authorised by M Edwards, 16 Lockwood Road, Kangaroo Flat
Funded from Parliamentary Budget





Castlemaine
8 Odgers Road

SUPER SPACIOUS 70s WITH VIEWS, NEARBY THE BOTANICAL GARDENS

Positioned with the Botanical Gardens as your borrowed landscape and neighbour, this super 70s Brick home is light, spacious and offers a great inner city lifestyle with a semi-rural atmosphere and your morning walk and coffee sorted with the Mill Complex just a short stroll away. The home features a private patio entry, 2 carports, great under-house storage, spacious open plan living and dining areas with polished timber floor, air conditioning and gas heating. There is a modern kitchen, 4 bedrooms (3 with robes), and 2 bathrooms. Just 1.3km from the train station the property also enjoys a great proximity to 2 local pubs, the local North Primary School plus the sunken oval and walking trail of the botanical gardens too.



\$725,000



Castlemaine
15 Maltby Drive

GRAND, CLASSY ENTERTAINER ON LEVEL & LEAFY GARDENS

Quietly positioned at the top of Maltby Drive in the original first stage of the Ely Estate, this grand, classy home has had a full modern day upgrade to a high standard and offers great living with functionality and convenience of local child care, aged care, schooling all within an easy stroll. Meticulously re-fashioned, the spacious home comprises 4 bedrooms with robes, 2 bathrooms, a study-office, modern central kitchen with walk-in pantry and a north facing sun-room, large open dining-family room that opens to a outdoors pergola, and a large lounge-dining room with Jestmaster fireplace and double aspect garden windows. The home has heating and cooling, quality windows, kitchen with large storage and Caesarstone benches, walk-in pantry, new bathrooms, and quality floor coverings throughout. There is a double garage, plus a parking bay perfect for a caravan with side Street access from Brown Street.



\$885,000



Campbells Creek
3 Scott Court

QUIET ASPECT WITH TOWN
CONVENIENCE & COUNTRY
VIEWS

Set on a massive 2047m2 with no neighbours in front and in a quiet cul-de-sac this private 4 bedroom 2 bathroom Campbell's Creek home is a true gem. The property is a drive through back lane with a large driveway and many plus lots of space for a garage, pet proof area is ideally suited for a large shed, pool and a veggie/orchard. The property has a large covered living areas of the residence have direct access to a 3metre verandah along the breadth of the home and a large patio for alfresco entertaining.



Metcalfe
14 Wilsons Road

RIVER VIEWS AND WALKS
IN METCALFE VILLAGE -
COTTAGE, STUDIO & 1.2
ACRES (4,822M2)

Set on just over one acre (40,000 sq ft) of rolling river flats of the Murrumbidgee, this gentle 60 metre stroll leads to a peaceful river and mighty river red gums. The low maintenance property is located Kyneton – Metcalfe Road with mains water, sewer, NBN, its own 4 tanks of water for garden and house, plenty of fruit trees, landscaped and tiered gardens with professional brick paved paths, large retaining boulders, and its own dam.



Harcourt
1 Symes Road

APPLE OF MY EYE -
COTTAGE LIVING IN
HARCOURT!

More than just a place to call home, this charmingly updated, Harcourt offers the kind of life you've only dreamed of. Set in the heart of Harcourt is prime position for country living with easy access to the endigo and nearby Castleman. This updated cottage boasts a large open plan living area with laminate flooring, wood heater and split system, and an updated timber kitchen with pressed metal splashback.



Rob Waller Director
0418 571 130



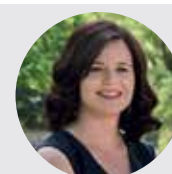
Brett Tweed Sales
0417 564 697



Narelle Waller Director
0408 571 131



Stuart Hassett
Property Manager 0417 737 660



Blasi Mulholland
Property Consultant 0417 311 733



Catrina Weiss
Asset Manager

Primary School open again in Guildford



☆ MP Maree Edwards announced re-opening of Guildford Primary School.

THE Guildford community has their own local primary school again with demand for enrolments ensuring its future.


State Member for Bendigo West, Maree Edwards, announced that the primary school campus in Guildford is again open for learning with 16 students initially enrolled with this number rising to 25 later in the year. School zones will be updated to account for the site’s reopening.

The school will operate as a campus of the Campbells Creek Primary School, re-kindling a previous arrangement between the two sites. The partnership will provide students with the social and academic advantages of a larger campus, along with the sharing of teachers and resources.

Work completed on the Guildford site included a new toilet block, upgrades to staff amenities, improved accessibility, and works to ensure the site is bushfire compliant.

“We are proud to be delivering these education facilities for the community of Guildford,” said MP Edwards. “The Guildford community has been vocal in their desire for the return of a primary school in their town and we have listened. By working together, we have been able to achieve a fantastic outcome for the children of the region.

“I know this is something the community have been hoping would happen and I am very proud to say that we have delivered on the community’s needs.”



Planning and Environment Act 1987
MOUNT ALEXANDER PLANNING SCHEME
Notice of the preparation of an amendment
Amendment C97malx

The amendment seeks to correct errors and anomalies within the Mount Alexander Planning Scheme, which are associated with both the mapping and ordinance of the Planning Scheme. The majority of these errors and anomalies are associated with the Heritage Overlay.

The amendment also proposes administrative changes to tidy up the zoning and overlay controls along the Calder Freeway (which has been declared a freeway under the Road Management Act 2004), to ensure that these are accurate and reflective of the current land use, road manager and conditions.

You may inspect the amendment, any documents that support the amendment and the explanatory report about the amendment, free of charge, at:

- the Mount Alexander Shire Council’s website <https://www.mountalexander.vic.gov.au>;
- during office hours, at the office of the planning authority, Mount Alexander Shire Council, Corner Lyttleton Street & Lloyd Street Castlemaine VIC 3450.
- at the Department of Environment, Land, Water and Planning website www.delwp.vic.gov.au/public-inspection.

Any person who may be affected by the amendment may make a submission to the planning authority about the amendment. Submissions must be made in writing giving the submitter’s name and contact address, clearly stating the grounds on which the amendment is supported or opposed and indicating what changes (if any) the submitter wishes to make.

The name and contact details of submitters are required for Council to consider submissions and to notify such persons of the opportunity to attend Council meetings and any public hearing held to consider submissions.

The planning authority must make a copy of every submission available at its office and/or on its website for any person to inspect free of charge for two months after the amendment comes into operation or lapses.

The closing date for submissions is 4 March 2022.

A submission must be sent to the Mount Alexander Shire Council (attention: Strategic Planning).

If you make a submission, Council will keep you informed during the amendment process.

DARREN FUZZARD
Chief Executive Officer

Council prepares amendment to planning scheme

MOUNT Alexander Shire Council is undertaking an amendment to the Mount Alexander Planning Scheme (Amendment C97malx).

The amendment seeks to correct errors and anomalies within the Mount Alexander Planning Scheme, which are associated with both the zoning and overlay mapping and ordinance of the planning scheme. The majority of these errors and anomalies are associated with the Heritage Overlay.

The amendment also proposes administrative changes to tidy up the zoning and overlay controls along the Calder Freeway (which has been declared a freeway under the Road Management Act 2004), to ensure that these are accurate and reflective of the current land use, road manager, and conditions.

Mount Alexander Shire Council’s Manager of Development Services, Georgina Hope said that the most recent corrections amendment to the Mount Alexander Planning Scheme was completed in 2016.

“Since the previous corrections amendment, more administrative errors and anomalies associated with both the planning scheme clauses and mapping have built up, or land conditions have altered”, said Ms Hope.

“Council officers keep a record of these so that they can be reviewed and corrected regularly, to ensure the Mount Alexander Planning Scheme is accurate and up-to-date”.

Community members can view the amendment from 4 February to 4 March, and make a submission at mountalexander.vic.gov.au/CorrectionsAmendment.

Copies of the amendment are also available to view during business hours at the Civic Centre in Castlemaine.

Submissions must be made in writing and submitted by Friday 4 March 2022.

For more information about the planning scheme amendment process, visit the ‘Planning Scheme and Amendments’ section of Council’s website at mountalexander.vic.gov.au.

RATs for school children

Continued from page 3

risk of severe illness for medically vulnerable children.

51,000 air purification devices have arrived in government and low-fee non-government schools in time for the beginning of term, helping remove potentially infectious particles from high-risk areas of schools – while more than 300 shade sails are already under construction, helping more classes learn safely outdoors.

The pool of inactive or retired teachers and school staff, and final year teaching students, has seen more than 346 teachers and 28 principals ready to be employed for short-term stints at schools as required – reducing disruption to students even in the case of COVID-19-related absences.

Minister for Education, James Merlino said, “The first day of school is a big day – and even more so after the last two years. I want to wish all students and staff heading to school this year all the very best for an exciting and much less disrupted school year.

“We’ve done the work to make sure schools are as safe as they can be – so we can keep our school communities protected and ensure that 2022 is a much less disrupted year of learning.”

Many of Australia's native ducks form life-long pairs. When one is shot, the other may never recover.

With our native ducks suffering long term decline, isn't it time Victoria banned duck shooting?

Recreational duck shooting is banned in ACT, QLD, WA and NSW



www.regionalvictoriansOTDS.com

Photo by Nalini Scarfe

Janet Trudgeon



☆ Janet and her husband Jim.

JANET is a well-known figure in the Newstead community, particularly for her involvement at the Historical Society and her work at the *Newstead Echo*.

Leaving high school in form five, Janet attended teachers college, becoming a qualified teacher at the age of 18. Her first teaching position was

at Noble Park, very close to where she had grown up.

"All the kids knew me, they were the younger siblings of kids I'd gone to school with.

"In 1961 I found a job at Newstead Primary School, which was close to my parents who had recently bought a farm in Elphinstone.

"My brother was a shearer, he'd worked all over Australia,

and he used to call our parents farm the fiddy farm," Janet laughs. "They had a little orchard, a few dairy cows and some piglets.

"I used to catch the train from Castlemaine to visit my parents and Elsie Barkla, with whom I was boarding, would drive me to the station. One day Elsie asked Jim Trudgeon, who lived across the road, to drive me. After six months, Jim asked me if I'd like to go out with him. I ummed and ahhed, the train was coming so I said, 'I suppose so'. We went to the Mount

Alexander Koala Park and then to Bendigo.

"I got promoted to a school in Kyneton, where I worked for over a year. Jim and I were married in '64 and adopted our children Glen and Leanne. Back then, there weren't many married women teachers and I stopped work. I then became involved as a parent with Newstead Primary: with parents club, school committee and volunteer reading.

"After that I did a lot of emergency teaching around the area, I did that for most of my life. It was hard. We didn't



☆ Janet was named Mount Alexander Shire Council's Citizen of the Year in 2006.



☆ Commemorating 35 years as Treasurer of Newstead Historical Society.



☆ This impressive piece of technology is the Bureau of Meteorology's official rain gauge!

Australia Day ambassador Tonia Todman. On the day the 2006 Mount Alexander Australia Day Awards were presented, The 2006 Citizen of the Year Award went to Janet Trudgeon of Newstead. The 2006 Young Citizen of the Year Award to Lauren Tyrell of Tursdale and the new 2006 Service to the Community Award to Ian Wilson of Castlemaine and Des Stewart of Harcourt.

have a phone on. When Glen was at school, he'd come running home asking if I could teach. Or a school would ring my neighbour, but I'd always be late by the time I got there.

"Before moving to Newstead I didn't really have a

Continued on page 11



Greg (work) - 1st Feb

How are you?



Greg (work) - 20th Feb

See you soon.



Sent - 23rd Feb

Glad I'm back!

The sooner you get in touch after an injury, the better the return to work journey.

If you're recovering from a psychological or physical workplace injury, or if you are an employer supporting an injured worker, make contact as soon as possible. It just takes a few simple words to make a big difference.

The sooner, the better.

[worksafe.vic.gov.au/thesoonerthebetter](https://www.worksafe.vic.gov.au/thesoonerthebetter)



Improving outcomes for injured workers.



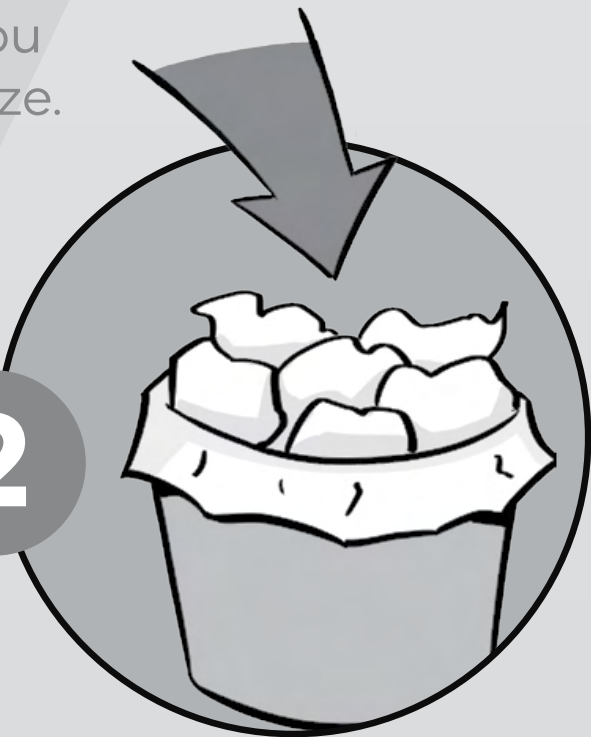
Protect yourself and your family

Cover your cough and sneeze



1

COVER your mouth and nose with a tissue when you cough or sneeze.



2

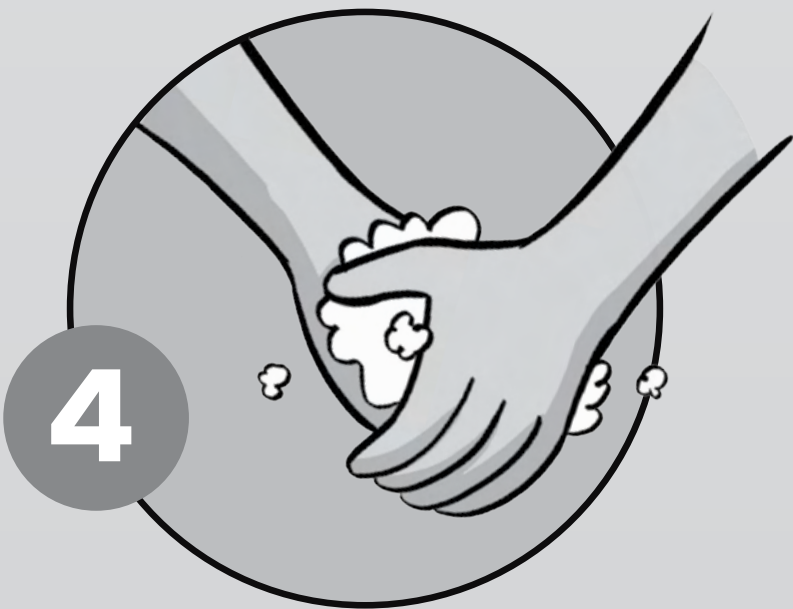
Put your used tissue in the rubbish **BIN**.



3

If you don't have a tissue, cough or sneeze into your upper sleeve or elbow, **NOT YOUR HANDS**.

WASH your hands with soap and running water. Dry your hands thoroughly with a disposable paper towel or hand dryer.



4

Stay germ free and healthy

Janet Trudgeon

Continued from page 9

community. I went to six different primary schools and didn't really have a home. Dad was in the Army and during the war years my mum and dad usually rented. When I was born, in 1939 we moved to a Melbourne suburb with family. The uncles were in the army and airforce and it was virtually all the women living together, grandma, mum, four or five aunts and the kids. The men would come home sometimes.

"Moving to Newstead in the 60s, virtually everyone knew everyone. All the kids at the school were third or fourth generation farmers kids, except the ring-ins like the policeman's kids. Mothers didn't really work, and you never called the mothers by their christian names and they didn't call teachers by their first names. You didn't see much of the fathers.

"You knew everybody's car and would wave to them, but now I only know a few."

According to Janet, who is responsible for the historical articles in the *Newstead Echo*, the paper began in around 1890 and ran until the 1960s before going off the grid for a while. The Newstead Council then took it over.

Once Newstead Shire was amalgamated into Mount Alexander shire in 1995, the

Echo became the paper it is today, now on its 292nd edition, with Janet involved since its first year.

In 2006 Janet was named Mount Alexander Shire Citizen of the Year.

"I didn't know I was going to get it and didn't know what to say, so talked about volunteering."

Cherie Lawton, who nominated Janet for the award said, "Janet's record with Newstead community activities is inspiring.... I believe it's time that her overall contribution to the community be publicly acclaimed and celebrated. When I mentioned to Newstead residents that I was nominating Janet, the common comment was, 'She is our quiet achiever.'"

An excerpt from the Historical Society Newsletter stated, 'I know of her efforts in the Girl Guides, the Uniting Church. The Community Centre, the *Echo* committee, the State School Mothers' Club and committee, RE teacher, Country Women's Association and the CFA Auxiliary... As well as that, Janet is also a person with a great sense of humour and a stock of good common sense that we turn to for guidance.'

Janet also held the role of Treasurer with the Newstead Historical Society since its inception in 1986.

"Last year, one Sunday afternoon, before Christmas, the Historical Society had an afternoon tea and the President started talking about this person, I didn't know he was talking about me," said Janet. "They presented me with a painting of the Court House that Karen Pierce had

Painted for me, because I'd been there for 35 years."

Amongst her other endeavours, Janet has also been providing the rainfall report for the Bureau of Meteorology since 1990, as well as providing the weather report to the *Tarrangower Times* every week.

Call Rob for all your plumbing needs



☆ Rob is glad to be back!

ROBERT McKnight has recently returned to Maldon to continue his plumbing business (Flowright Plumbing) and to help out on the family farm just out of Maldon.

When the *Times* caught up with Rob this week, he said, "My main aim is to provide a local full-time plumbing service to the Maldon community. I specialise in repairs and maintenance, although I also work on new builds and extensions. I can even provide a temporary hot water service while waiting on parts to fix the existing unit if necessary."

Rob grew up in Maldon, attending Maldon Primary School, then Castlemaine

Technical School. After leaving school, Rob travelled to Arnhem Land, where he worked at Ramininging for a few years.

Returning home in 2010, he completed an apprenticeship in plumbing before starting his current business in 2014 in Drysdale. Rob found a niche in Drysdale, where he worked almost exclusively on wood heaters and gas heaters.

Rob said it's great to be back in Maldon and that people have been very welcoming.

So, for all your plumbing needs, give Rob a call on 0417 492 533. His details are in the Business and Services section of this paper.

Homesick exhibition



☆ Top left: Peter Pramitha, top right: Mandy Cragg and Billy, bottom left: Ellen Roberts and bottom right: Deidre Ryan.

REVEREND of the Maldon and Inglewood Anglican Church parishes, Darcy Vaughan, is launching an exhibition at the Newstead Arts Hub on Saturday 5 February, running 10am-4pm each weekend during February.

The exhibition is a series of photos and interviews that Darcy has compiled during last year's lockdown.

The series, entitled *Homesick*, explores how our communities are functioning under the pressures of lockdowns and the resulting anxiety and uncertainty.

Darcy went visiting along the Loddon River from Inglewood to Newstead and over to Maldon to see how people were holding up.

Each visit resulted in a photo at the front gate, a figurative representation of the strange ways we were forced to relate with one another. And amongst the socially distanced catching up, each person was asked to share their reflections on the theme 'homesick'.

For some, 'homesick', stirred fond memories of a time when travel was easier. For others, 'homesick' stirred a thankfulness to be home safe. For many, homesickness

was avoided as long as a loved one was nearby. And for others still, 'homesick' was better said 'sick of home', and brought out the frustration that we were all seemingly stuck.

'Homesick' is a culmination of these visits, a collection of images and words which serve as a contemporary historic record of this shared experience. You are invited to come and reflect further on your experience of these last two years, to contribute your own perspective on this time, and to be part of considering how we might continue to support and care for one another through times of isolation.

Darcy told the *Tarrangower Times* that he had studied film at University but had been enjoying amateur photography for many years.

"This was a way of trying to capture what people were doing while isolated and trying to connect people. A way for people to share their experiences.

"I hope that people who visit the exhibition might be inspired by the words of others and to open conversations about social isolation and find ways to connect with each other."

Letter to the Editor

Praise for the Baringhup Community Committee

I would like to praise the dignified and cooperative way the Baringhup Community Committee coordinated a series of information sessions for small groups to meet with Goulburn Murray Water representatives and the follow-up community meeting.

I think the community and supporters of Cairn Curran

are amazing and have participated respectively and pragmatically in the process and I am pleased that the outcome was the establishment of a seven-person committee to continue to liaise with GMW. Hopefully, after a pretty disingenuous start by GMW, they participate in these future meetings in good faith to fully consider proportionate ways to mitigate the OH&S issues which seem to be at the heart of this situation.

Helen Evans, Baringhup

MALDON



GROCERIES OPEN

Mon-Sat: 7.30am - 7pm
Sun: 9am-5.30pm

LIQUOR OPEN

Mon-Thurs: 9am - 7pm
Fri-Sat: 9am - 7.30pm
Sun: 10am-5.30pm

SPECIALS

from Wednesday 2nd Feb to Tuesday 8th Feb

Australia White Seedless Grape \$5.99kg

Fantastic Rice Crackers 100g Selected Varieties \$1.50ea

Great Northern Super Crisp Lager 24 Pack \$46ea

Victoria Bitter 24 pack \$49ea

11-17 Main Street Maldon.
Ph: 5475 2458

MUCH ADO

GENERAL STORE. MALDON

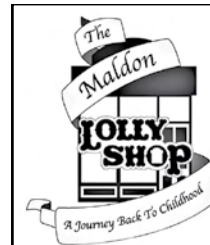
22 Main Street, Maldon

We have a gorgeous, wide-ranging selection of kids toys, swaddles, blankets, night lights + much more cuteness for your little loves! Available in-store + online.

Open Mon - Wed 10am - 3pm + Thurs - Sun 10am - 4pm



Follow Us: @muchadomaldon
Email: info@muchado.com.au
Call 03 5475 1005



10am - 4.30pm weekdays
10am - 5pm weekends

Open 7 Days

20 High St., Maldon

Ph: 5475 1136

www.themaldonlollyshop.com.au

Retailers and Wholesalers of Good Old Fashioned Confectionery; Gourmet Cordials and Delicious Chocolates



FUELS AND LUBRICANTS

ROBERT COX MOTORS
HIGH STREET, MALDON, 3463

Robert Cox

SPECIALISING IN MECHANICAL REPAIRS

• Lubrication Service • Smash Repairs • Tyres
• Windscreen Replacement • Batteries • Parts
• Disc and Drum Brake Machining
• Wheel Alignments

* LICENSED MOTOR VEHICLE TESTER *

TELEPHONE 03 5475 2381

TT Dine Out Directory

BERRYMAN'S CAFÉ & TEA ROOMS - MALDON

30 Main Street - 5475 2904
Open 7 days
Full menu is available to take away.
We also have some individual home-made frozen meals.

CROWN HOTEL - NEWSTEAD

8 Lyons Street - 5476 2222
Open 3pm every day
Meals Thursday - Sunday
Friday night roast
Sunday night pizza 5.30pm - 7.30pm
Bottle shop open from 3pm.

GOLD EXCHANGE CAFE - MALDON

46 Main Street - 0439 368 077
Open 7 days
Limited dine-in and takeaway.
Monday-Friday from 6.45am-3pm and
Saturday and Sunday from 7.30am-3pm.

MALDON FUDGE & ICE CREAMERY

29 Main Street
(Between IGA and the Pharmacy)
Great range of Fudge, Nougat and Ice Cream.
Ice Cream is also available in take home tubs.
Open Wednesday, Friday, Saturday and Sunday
11 am - 4.30pm.

MALDON TAKEAWAY - MALDON

10 Main Street - 0476 887 062
Open 11am-7ish every day.
Fish and Chips, burgers, hot dogs,
loaded fries, souvlakis, pizza, coffee
and happy to be here service.



BULL & MOUTH HOTEL - MARYBOROUGH

119 High Street - 5461 3636
Open for Breakfast, Lunch and afternoon tea
Sunday - Tuesday 9am - 5pm and
Breakfast, lunch, afternoon tea and dinner
Wednesday - Saturday 9am - 10pm.



CUMBERLAND HOTEL - CASTLEMAINE

191 Barker Street - 5472 1052
Open Monday - Thursday 9am-12pm, Friday 9am-1am, Saturday 10am-1am, Sunday 11am-11pm.
Meals at the Bistro 7 days per week.
Lunch 12pm-2.30pm, Dinner 6pm-8.30pm.
Extensive Menu.

KANGAROO HOTEL - MALDON

89 High Street - 5475 2214
Monday closed
Tuesday 4pm til close
Wednesday 12pm til close
Thursday 4pm til close
Friday Saturday and Sunday 12pm til close.

MALDON HOTEL - MALDON

58 Main Street - 5475 2231
OPENING HOURS
Monday & Tuesday: 4pm - close
Wednesday - Sunday: Middy - close
Bookings recommended

NEWSTEAD COUNTRY STORE - NEWSTEAD

12 Lyons Street - 5476 2252
Normal trading hours:
Monday & Tuesday: 7am-2pm
Wednesday - Friday: 7am-7pm
Saturday: 8am-7pm
Sunday: 9am-4pm



CAFÉ MALDON - MALDON

52 Main Street - 5475 2022
Open 7 days - dine in and takeaway
Please call to book. Only 10 inside and 8 outside.
Seating is for one hour only.
Please keep your mask on until seated.
<https://order.hungryhungry.com/cafemaldon/menu>

DIG CAFE - NEWSTEAD

13 Lyons Street - 5476 2744
Well known, well loved cafe with excellent food and coffee, fully licensed. Open 8.30am until 3.30pm each day and Friday nights for takeaway pizza from 5pm until 8pm. Bookings essential as numbers are restricted. www.digcafe.com.au

Le Sel DELI - MALDON

12 Main Street - 0417 329 776
Open 7 days a week
Monday to Thursday 9am - 3pm
Friday to Sunday 9am - 5pm
Saturday night **Le Sel French Bistro** contact us for bookings.

MALDON ROSE CAFE - MALDON

6 Main Street
(formerly Zen Cafe)
Everything baked on premise.
All Press coffee, Harney & Sons tea.
High teas available.
Open 10am - 4pm Saturday & Sunday.

RAILWAY HOTEL - CASTLEMAINE

65 Gingell Street - 5472 1250
Great food, both traditional pub food and gourmet.
Daily specials.
Open 7 days a week for dinner and lunch on weekends. Phone : 5472 1250 for bookings.

Health & Fitness Directory

KEYSTONE PILATES

Keystone Pilates provides a safe friendly environment where people of all ages and abilities can work on their strength, flexibility and balance.

CALL FOR A FREE ONLINE TRIAL

The Faulder Watson Hall, Barker Street, Castlemaine
Contact Lloyd 0421 329 895



MALDON GOLF CLUB

GOLF LESSONS – on demand - all standards - clubs available

SOCIAL GOLF – 9am Monday and Friday. Ring to check times - 9 holes, free for members or \$10 green fees

RECREATIONAL - exercise and dog walking memberships available.

Enq: maldongolf4u@gmail.com or Gay Reid 0413 013 766.



SUMMER IS HERE - A GREAT TIME

TO GET YOUR BIKE SERVICED

(Mention this ad and we will donate \$10 from the service fee to the MALDON, MURRAY TO MOYNE cycling team, in support of the MALDON HOSPITAL)

51 Templeton Street,
Castlemaine
Ph: 5470 6333



MALDON CROQUET CLUB

(Established 1925)

Francis Street Maldon

Social Croquet every Tuesday, Thursday and Saturday from 9.30am and Tuesday evening from 7pm from October to March.

New players always welcome to come and give it a try. Equipment supplied.
Also open to young players, Working With Children certificated members to help with learning and coaching available. Weekly green fees \$5.
Enquiries: Damien Kennedy 0428 130 764.



MALDON SWIMMING POOL

Tel: 5475 2074

Opens Saturday 4th December

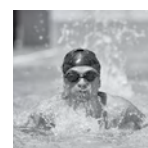
Aqua Aerobics: 6pm Tuesday & Thursday - cost \$9.50 (or \$6 with season pass)

Lap Swimming: 6pm - 7pm Monday, Wednesday, Friday

Fun, Play & Recreation:

Weekends, School Holidays, Public Holidays: 1pm – 6pm

School Weekdays: 3pm – 6pm



treadpodiatry

TREAD PODIATRY

Providing superior foot care to those in need.

· Foot & ankle pain · Orthotics · Children's feet · Wound care
· Nail surgery · Sporting injuries · Diabetic foot health
· Gait analysis · General footcare

255 Barker Street, Castlemaine. Ph: 5472 3295



BLAST FROM THE PAST

THE BOHEMIAN DRAMATIC COMPANY

E.J. Cole's Bohemian Dramatic Company, with their large team of trained horses, arrived by special train in Maldon for a one-week season on Tuesday 25 October 1910. They set up their giant canvas show tent, able to seat 2,000 people, in Gray's paddock at the corner of High and Union Streets.

On each night of their stay the Company presented a different show. On Wednesday evening the 'American Indian drama, Buffalo Bill' drew an audience of over 600 which was said to be a record for Maldon. The Indian and cowboy costumes, the use of horses and the realistic scenery combined to produce one of the finest stage shows ever seen in the town.

The next evening they presented 'With the Colors', a military drama set during the Boer War. The highlight of this show was the Company's famous horse, Cowboy. During the first act Cowboy's rider is shot while delivering important despatches. As the rider lies on the ground, the horse offers him water after tearing a water bag from its saddle with its teeth and placing it on the man's chest. Cowboy then lay down next to his master and after the rider crawled on to him, the horse jumped up and carried his master and the despatches to safety.

The Company concluded their performances under canvas with two Australian themed shows. On Friday they performed 'The Squatter's Son' which was said to encompass all aspects of bush life. It was reported to combine fast and furious action with many comic scenes. On Saturday they presented the bushranging drama 'Ned Kelly and His Gang'.

For their final two shows the Company moved to the Temperance Hall, (now the Community Centre), where they performed to full houses. On Monday their melodrama 'East Lyne' was said to have reduced many in the audience to tears. On Tuesday they ended their planned stay in Maldon with a stage adaptation of Harriet Beecher Stowe's 'Uncle Tom's Cabin'.

Before the Bohemian Dramatic Company left for Castlemaine by special train, members of the Maldon Hospital Committee organised for some of them to return on Friday 11 November to present a benefit performance for the Hospital. They chose a Californian play entitled 'My Partner, or A Woman's Love' and invited a local actor, William Shortall, to join the cast. After expenses, the Hospital Committee raised £7 from its half share of the door takings.

This information was supplied by the Maldon Museum and Archives.



Your Community Library

97 High Street, Maldon. *Dja Dja Wurrung Country.*
Open Mon, Wed & Friday 2-4pm, Saturday 9.30am - 12 noon.
Enqs: 0429 776 893
maldonathenaeumlibrary@gmail.com

Station Eleven by Emily St. John Mandel

Set in the days of civilisation's collapse, *Station Eleven* tells the story of a Hollywood star, his would-be saviour, and a nomadic group of actors roaming the scattered outposts of the Great Lakes region, risking everything for art and humanity.

One snowy night a famous Hollywood actor slumps over and dies onstage during a production of *King Lear*. Hours later, the world as we know it begins to dissolve. This suspenseful, elegiac, spellbinding novel charts the strange twists of fate that connect five people: the actor, the man who tried to save him, the actor's first wife, his oldest friend, and a young actress with the *Traveling Symphony*, caught in the crosshairs of a dangerous self-proclaimed prophet.

The Lincoln Highway by Amor Towles

In June 1954, 18-year-old Emmett Watson is driven home to Nebraska by the warden of the work farm where he has just served a year for involuntary manslaughter. His mother long gone, his father recently deceased, and the family farm foreclosed upon by the bank, Emmett's

intention is to pick up his eight-year-old brother and head west where they can start their lives anew. But when the warden drives away, Emmett discovers that two friends from the work farm have hidden themselves in the trunk of the warden's car. Together, they have hatched an altogether different plan for Emmett's future.

Silview by John le Carré

Julian Lawndesley has renounced his high-flying job in the city for a simpler life running a bookshop in a small English seaside town. But only a couple of months into his new career, Julian's evening is disrupted by a visitor. Edward, a Polish émigré living in Silview, the big house on the edge of town, seems to know a lot about Julian's family and is rather too interested in the inner workings of his modest new enterprise.

When a letter turns up at the door of a spy chief in London warning him of a dangerous leak, the investigations lead him to this quiet town by the sea . . .

Silview is the mesmerising story of an encounter between innocence and experience and between public

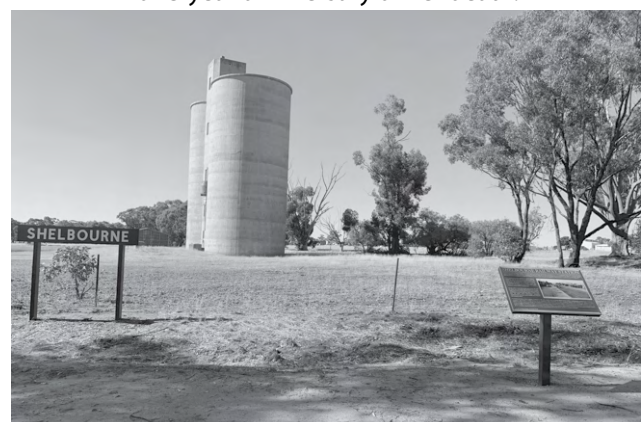
duty and private morals. In this last complete masterwork from the greatest chronicler of our age, John le Carré asks what you owe to your country when you no longer recognise it.

With thanks to Goodreads for reviews.
The Maldon Athenaeum Library Team

Shelbourne silos



☆ Secretary of Nuggetty Land Protection Group, Christine Fitzgerald, paid tribute to Jane Mitchell on the one-year-anniversary of her death.



☆ Jane wanted the silos kept intact and unpainted.

Continued from page 4

group of us got together and finished the project."

The event was held on the one-year-anniversary of Jane's death, to pay tribute to her

work on the project and was attended by many of her family and friends.

"It was an emotional day. It was a celebration of Jane. I think she would have been thrilled," said Christine.

Have your say on recreation at GMW water storages

VISITORS to Goulburn-Murray Water's (GMW) lakes, dams and reservoirs are being invited to have their say on the waterways' recreational offerings.

As part of GMW developing its Land and on Water

Service Plan, the corporation is carrying out a survey to understand what matters most to visitors to the storages.

GMW Water Storage Services Acting General Manager, Scott Wikman, said while the main purpose of its storages was to capture, store and release water to customers, they were also great places to visit for recreation.

"Many of our lakes, dams and reservoirs have fantastic recreation infrastructure like parks, barbecues, boat ramps and facilities that make them the perfect place to visit and play," he said.

"To ensure the future of our storages as a great place to visit, we would like to hear from visitors to our storages on what matters most to them in terms of service and amenity provision."

The Water Recreational User Survey is open until February 28, 2022.

A top line summary of the key themes will then be made available.

To complete the survey, head to GMW's Your Say page at www.g-mwater.com.au/your-say-at-gmw.

IMT - In Maldon Today Radio Program



TUNE in today as Nancy, and Slats welcome sometime IMT presenter Tony Harvey as their guest – let's see what makes this actor and Des Dodgy impersonator tick.

Last Friday EC and Alison debriefed on the Twilight Dinner, the beautiful summer's evening and who was wearing what. Note that AP won a prize for impersonating a time warped maid! Chat ranged over opening up alleyways to link Main Street with Tobin, lighting up the Beehive Chimney, the RAIN and other Maldon stuff. Our guest Luz Restrepo (pictured here as the rose between two thorns - is an amazing woman

who has become involved with social inclusion and the building of strong economic connections for migrant women. Her energy and passion for the causes she champions were impressive; an engaging and interesting guest.

Next Friday EC and Kev meet Tim and Alysha Griffiths, who run Carsons Antiques – one of Maldon's newest business ventures – on Main Street.

To catch up on our previous programs click on <https://www.mixcloud.com/nancymay007/>.

See our ad on page 15.

Mike Smythe



BRACKEN LAWYERS

A boutique legal practice specialising in:

- Conveyancing • Property Law
- Commercial Leases • Guarantee and Loan advice
- Business Sale and Purchases

Based in 'The Hub' 3/233 Barker Street, Castlemaine and servicing Maldon by appointment.

Phone 5470 5062 or email ian@brackenlawyers.com

www.brackenlawyers.com

Rainfall Baringhup

Week Ending 1.2.22

84.8mm

Monthly Totals So Far:

Month	2022	2021	2020
Jan	90.4	92.9	44.6
Feb	0.0	8.9	56.3
Mar		72.3	32.8
Apr		9.8	99.6
May		42.0	49.2
June		54.0	38.3
July		63.1	23.5
Aug		35.0	48.7
Sept		47.7	40.9
Oct		87.8	47.1
Nov		57.5	25.7
Dec		18.3	29.1
TOTAL	90.4	596.0	535.8

Rainfall Maldon

Week Ending 1.2.22

85.4mm

Monthly Totals So Far:

Month	2022	2021	2020
Jan	90.0	83.4	35.2
Feb	0.0	17.0	52.8
Mar		83.8	37.0
Apr		14.4	145.4
May		53.6	66.2
June		81.0	49.2
July		82.8	32.8
Aug		41.8	62.2
Sept		49.2	54.6
Oct		76.8	73.2
Nov		62.4	37.2
Dec		18.8	39.2
TOTAL	90.0	683.8	685.0

Rainfall Newstead

Week Ending 1.2.22

97.8mm

Monthly Totals So Far:

Month	2022	2021	2020
Jan	103.4	101.6	53.6
Feb	0.0	13.6	38.0
Mar		67.2	35.8
Apr		11.4	107.6
May		53.2	56.2
June		62.6	46.6
July		68.2	29.4
Aug		44.0	69.6
Sept		70.0	46.8
Oct		85.4	56.2
Nov		70.4	22.8
Dec		18.6	31.2
TOTAL	103.4	666.2	593.8

Water Storage Capacity as at 1.2.22

Site	Cairn Curran	Max ML	147,130	Current ML	96,568	% Full	65.63
Site	Malmsbury	Max ML	12,118	Current ML	6,260	% Full	53.10

ARBORIST



Arborea
Tree Management

Consulting Arborist

Contract Climber • Tree Pruning & Removals • Cable Bracing & Risk Assessment • Mulching & Stump Grinding • Tree Maintenance & Protection • All Tree Works
Fully insured

Reubin Williams
0439 326 113

CARPENTER



Local Registered Builder.

Renovations and New Builds.

ELECTRICAL

EcoTech
ELECTRICAL & SOLAR

- Home automation
- New & heritage homes
- Home safety checks
- Security cameras
- Heating & cooling

Phone Pat Cummins
0400 066 932

JP

Justice of the Peace (JP)

Local JP Margaret McKnight available for witnessing documents by appointment.

Contact: 5475 2440 or 0439 752 465

PET CARE



Maldon Vet Clinic

Opening hours:
Tues – Fri 9am – 5pm
Ph 54 751 751

Fear-free consultations and home visits available



48 Hornsby Street
Maldon

Emergencies
0492 805 480

BUILDING DESIGNER

BUILDING DESIGNER
Maldon Based



*Home Design
Planning Applications
BAL Assessment
Project Management*

0402532082

eric@s3design.eco

COMPUTER HELP



COMPUTER HELP

Castlemaine Maldon Surrounds

call Stefan

03 4432 7106

support@dkom.com.au
www.dkom.com.au

ELECTRICAL

Ian Cain Electrical
Rec No 13585



Domestic, industrial, commercial, farming,
emergency call out on request

Carisbrook

Phone/Fax **5464 1402**

Mobile **0418 388 226**

ices@westnet.com.au

LOST & FOUND

The *Tarrangower Times* offers a **FREE** service for Lost & Found **5475 2256** or editor@tarrangowertimes.com.au

BUSINESS CARDS

BUSINESS CARDS

Full colour, 1 or 2 sides on 300gsm gloss card with FREE design.

500..... \$140.00
1,000 \$180.00

Phone Karen on **0404 357 556**
Don't forget they're tax deductible

CONCRETER

CONCRETER
PAT COLLINS

PATHS, SHEDS, FLOORS, DRIVEWAYS, PATTERN, COLOUR
PAVING ALSO BRICK PAVING

Shelbourne Road
Maldon
Ph. (03) 5475 1080

SEEN ANYTHING?

Seen anything interesting?
Call the *Times* on:
5475 2256

PAINTING



Interior & Exterior Residential & Commercial
New/Old houses
Staining
Roofs
Over 15 years experience
Free Quotes

Ph: Daniel
0400 090 480

PLASTERING

Maldon Plastering Services

Heritage restoration, new homes, extensions and renovations.
No job too small.
Phone Richard Port

0412 397 404

CABINET MAKER

CABINET MAKING & INTERIORS

Custom-made fitted and free-standing furniture
Kitchens, kitchen renovations, wardrobes, vanities, bookcases etc.
Repairs and restorations
No job too small

Martin Waddington
Ph: **0423 405 863**

Email:

mwaddington70@gmail.com

DIRECTORY

To appear in the *Tarrangower Times*
Business & Services Directory

for only \$14.40 per week, give Karen a call on:

0404 357 556

or

karen@tarrangower-times.com.au

FLOORING

TRUE BLUE FLOORS

- Sanding & Polishing Specialists
- New & Old Floors
- Free Quotes

For Quality Workmanship

Ph: TIM OOSTENBRINK
0417 110 922
MALDON

PAINTING

Jim's Painting



0458 374 579

PLUMBER



FLOWRIGHT
PLUMBING & GAS
MAINTENANCE NEW HOMES DRAINAGE GAS

Robert McKnight
Plumber & Gas Fitter
LIC 107102

0417 492 533
flowrightplumbing@icloud.com

CABINET MAKER

JOINERY & HANDYMAN

All Woodwork Jobs
Interior & Exterior.
Maldon and surrounds.

No job too small.

Free quotes.

Nick Pierce
Ph. **0491 115 459**

DRESSMAKER

DRESSMAKER / TAILORESS

Alterations & repairs.
Experienced and reliable.
Maldon based.
Very reasonable rates.

Phone: 5475 2952
or 0448 510 103

FRAMEMAKER

MOLLYPENNY
UNIQUE, TRADITIONAL & GALLERY STYLE

FRAMEMAKER

- FOR ARTWORKS ON ALL MEDIA, ANY SIZE
- BOXWORK FOR MEDALS & EPHEMERA
- CANVAS STRETCHING
- MIRRORS . REPAIRWORK

BY APPOINTMENT:
0412 194 760
mollypenny1@gmail.com

PAINTING

Malcolm Stone Painting Services

Maldon & Surrounds
Over 40 years Experience

All types of painting Interior - Exterior - Inc. Heritage

Please call Mal on
0400 417 417
Maldon

PLUMBER

Steve Kile
Licensed Plumber & Gasfitter
VBA Lic No 28819

Ph. 0409 638 966

All your plumbing, gasfitting, roofing & drainage needs at competitive prices.

Free quotes/estimates,
32 yrs experience
stephenkile@outlook.com

CARPET CLEANING

Eastman
CARPET CLEANING

For all your carpet and upholstery cleaning requirements

GARY
0428 332 476
gary@eastmancarpetcleaning.com.au

ELECTRICAL

Cainpower

Bernie Cain

Your Trusted Local

Electrical Contractor

Rec 8335

Maldon & Surrounds

0417 526 308

HAIR DRESSER

Debbie's Salon

Mens & Ladies
HAIRDRESSER



for all your Hair Care
Closed Tuesdays
Sat. mornings by appt.
27 Harker St., Maldon
Ph: **5475 2400**



The *Tarrangower Times* is bound by the Standards of Practice of the Australian Press Council. If you believe the Standards may have been breached, you may approach the newspaper itself or contact the Council by email (info@-presscouncil.org.au) or by phone ([02] 92611930). For further information see <http://www.presscouncil.org.au>.

STOCK FEED

Stock Feed and Pet Food

Brands incl: Black Hawk, CopRice, Cobber and Barastoc Poultry Feed & Wild Bird Seed.



FREE LOCAL DELIVERY

Open 7 days a week
14 High St, Maldon.
Ph: 5475 1018

S P MACHINERY

Tarrangower Times Classifieds

Phone: 5475 2256

karen@tarrangowertimes.com.au

POSITION VACANT



**Maldon
Neighbourhood
Centre Inc**
Friendship & Learning

SEEKING MALDON NEIGHBOURHOOD CENTRE CO-ORDINATOR

This friendly and busy Neighbourhood Centre is seeking a passionate and experienced Centre Co-ordinator to join the team. The position is part time with negotiable hours totalling 30 hours per week.

Maldon Neighbourhood Centre (MNC) is a not-for-profit community based organisation that encourages a sense of belonging and community engagement.

To apply: <https://www.ethicaljobs.com.au/members/Maldonnc/centre-coordinator-maldon>

PUBLIC NOTICES

Tarrangower Times
APOLOGIES FOR VARIED OFFICE HOURS ON
MONDAY, TUESDAY & WEDNESDAY MORNINGS.
AS THE OFFICE MAY BE UNATTENDED PLEASE CALL
FIRST.
5475 2256 OR 0408 594 246

PUBLIC NOTICES

Panacea Estate

329 Seers Road, Welshmans Reef.
(Formerly Chapple's Cairn Curran Estate)

*Shiraz is Red, Stilton is Blue
Cheese & Wine go together,
Just like me and you!!*



Book an afternoon at Panacea Estate with the one you love! We have romantic picnic packs including a bottle of bubbles available for the weekend of Feb 12 & 13. <https://panaceaeate.com.au/bookings>

IMT - In Maldon Today Radio Program

Tune in to 94.9 MAINfm

Every Friday morning between 9am and 11am.

Tune into www.mainfm.net or the TuneIn Radio App.

Studio guests and latest news and gossip in 'Street Talk'

Suggestions and feedback: inmaldontoday@gmail.com

or Facebook (IMT - In Maldon Today Radio Program)

SMS comments during the show (0488 863 186)

and sign it so we can read it out on air

Listen later on <https://www.mixcloud.com/nancymay007/>

Seen anything interesting?
Call the *Times* on: 5475 2256

PUBLIC NOTICES

ROB LEESON

Photographer



Pets, People, Portraits

0400 100 075

www.robbleeson.com.au

Advertising deadline
12 noon Tuesday, phone
0404 357 556

Proudly
sponsored
by

Maldon Newsagency & Tattslotto



TATTS INSTANT SCRATCH-ITS

Scratchie sales have returned to Tatts.

Try your luck with Tatts Instant Scratch-Its (\$1-\$10) at Maldon Newsagency.

We are not just a paper/magazine Lotto shop.

Come and check out our range of ever changing products.

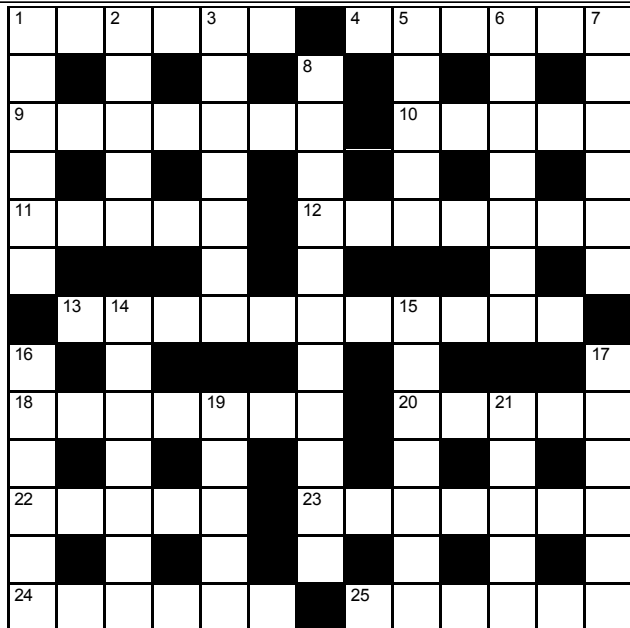
Open for your convenience from 5.30am daily.

Use us at your convenience.

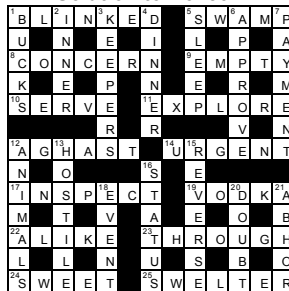
CROSSWORD Number 835

Across

- 1 Surplus
- 4 Declares
- 9 Dissolution of marriage
- 10 Bursts of wind
- 11 Call on
- 12 Bundle
- 13 In a deceitful way
- 18 Filled pasta
- 20 Firearm
- 22 Plane captain
- 23 Tiered
- 24 Finishing
- 25 Stick



Solution to No. 834



Down

- 1 Salad green
- 2 Inlets
- 3 Scrape
- 5 Reason
- 6 Fix in place
- 7 Method
- 8 Accountable
- 14 Void
- 15 Wandered
- 16 Multiply by three
- 17 Interfere
- 19 Frequently
- 21 Power

Proudly
sponsored
by

Maldon Newsagency & Tattslotto



TATTS INSTANT SCRATCH-ITS

Scratchie sales have returned to Tatts.

Try your luck with Tatts Instant Scratch-Its (\$1-\$10) at Maldon Newsagency.

We are not just a paper/magazine Lotto shop.

Come and check out our range of ever changing products.

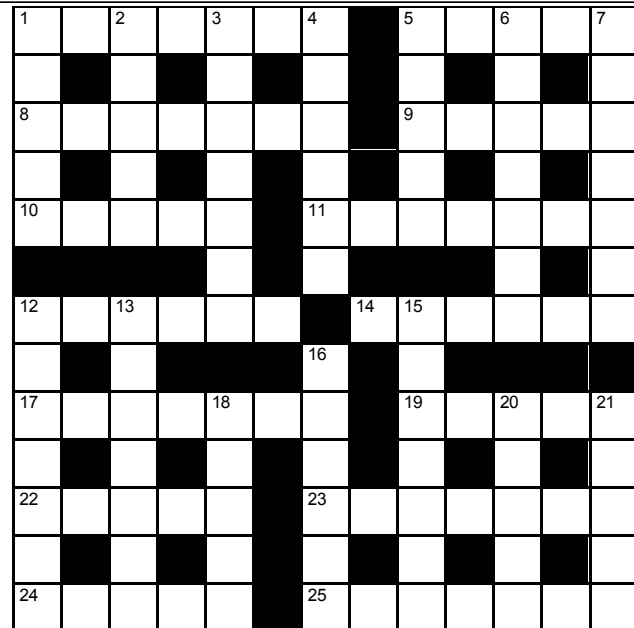
Open for your convenience from 5.30am daily.

Use us at your convenience.

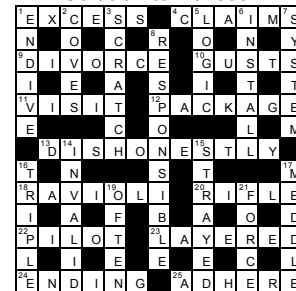
CROSSWORD Number 836

Across

- 1 Spice
- 5 Varieties
- 8 Composed
- 9 Answer
- 10 Wash with water only
- 11 Core
- 12 Awkward
- 14 Stable
- 17 Noise during storm
- 19 Preside over
- 22 Sixty-minute intervals
- 23 Out of breath
- 24 Trades
- 25 Quiet



Solution to No. 835



Down

- 1 Less
- 2 Extraterrestrial
- 3 Vents
- 4 Assortments
- 5 Duties
- 6 Yellow maize meal
- 7 Backdrop
- 12 Captures
- 13 Strange
- 15 Diplomatic
- 16 Fruit grown on vines
- 18 Office work surfaces
- 20 Side with
- 21 Rascal



The Book Wolf

**The Book Wolf accepts no responsibility
for last week's crossword.**

0487 193 223

1/26 High Street



The Book Wolf

Are you a Book Wolf frequent flier?

0487 193 223

1/26 High Street



BACK TO BACK WE FACED EACH OTHER



☆ Elaine coping with a broken chair.

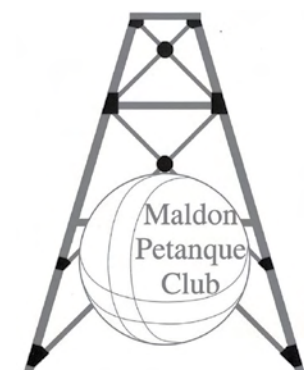


☆ Keeping an eye on Kevin.

MALDON PÉTANQUE CLUB



☆ The Rusty Poppet Trophy stays with Maldon. Debbie Hicks and Andrew Leckie, presidents of Pyrenees and Maldon Pétanque clubs.



*It was another hot one on Sunday
But off we went to Avoca to Play
We won, we won, we won
Even with the hot sun
Last Sunday we headed over to Avoca in an attempt to retain the 'Rusty Poppet Head' trophy. Because of the forecast heat it was a 10am start with three games before lunch and*

one after thankfully. Maldon had 14 players and Pyrenees had 17 so there were some teams of two players and some of three players.

At lunch time Maldon had a comfortable lead but still needed to perform well in the last round, which it did. At the end of play the trophy stayed with Maldon, the final scores being Maldon PC 19 games to Pyrenees PC 8 games.

The notable players for Maldon who all won their four games were June Hunter, Terry Hunter, Bev Forsyth, George Forster and Geoff McLennan.

Next Sunday we return to normalities with our regular club competition on the St Brigid's piste starting at 2pm.

Geoff McLennan

ON Sunday 30 January, a few brave piste artistes attended the inaugural Social Pétanque games for 2022.

Despite the fluctuating

weather report, from 31° to 29° to 28° to what seemed like 34°, though it was ONLY 30°, we gathered bravely on the Penny School piste. This

MALDON BOWLING CLUB



ANOTHER very successful community night was held on Friday 21 January. A special thank you to our generous members who supplied food on the night and helped out.

Last Saturday we travelled to Maryborough Golf for our third away game in a row. After the heavy rain on Friday the green played surprisingly well.

Peter Sedgwick's team of Charlie, Sean and Ellen lead 11 to 2 after 9 ends, however after 14 ends it was 12 all. Maldon scored 13 shots and pulled away but dropped a

final 6 shots. In the end Maldon won 26 to 18.

Peter Seamer's team of Dean, Karen, and Phil, faced a very experienced team. Maldon won 8 of the 21 ends to lose 12 to 28.

Kevin Simpson's team of Damien, Darrin and Jim won 10 of the 21 ends losing overall 13 to 22. Maldon were missing three experienced players on the day.

A big thank you to Kevin, Damien and Darrin for their dedication to the club in doing a great job of playing so well on the day. Next week we have a home match against Maryborough Highland White.

**Peter Sedgwick
President**

Maldon & District
Community Bank® Branch



The Maldon & District Community Bank is a Platinum Sponsor of the Maldon Bowling Club.

CASTLEMAINE FINANCIAL SERVICES

- Accounting & Taxation
- Business Services
- Financial Planning
- SMSF Advice

12 Mostyn Street, Castlemaine. Phone: 5470 6100

was despite potential rain also forecast. The rain proved to be a mere figment of the BOM's imagination. Back to back we faced each on the Penny School piste, and played two long, long hot games.

Before we started, Kevin and Jenny raked an enormous amount of leaf litter from the piste. Then, two languid games ensued with very lethargic players. It was so hot that one player almost succumbed to heat stroke and had to be ministered to with wet towels, while another sat down on a chair that broke under her, with startling results.

At the end of the unpleasantly warm afternoon, first

place went to Carole, Steve and Maxeen with 2 wins and +3 points. Second place went to Cap'n P, Mme Bleue and EC with 1 win and +2 points.

Barb, Elaine, Blakey and Ann were in third place, with 1 win and -1 point. Kevin, Jenny and Joan were 'lucky last' with 0 wins and -4 points. As you can see by the scores, it was a very long hot afternoon.

Our next games will be on 13 February at the usual time, in the usual place, commencing at 2pm sharp. Thanks once more to the ongoing generosity of our hosts Julian and Claire (still in absentia cos of COVID and such).

Mme Bleue

Maldon Newsagency & Tattsлото



Open every day of the year! Shop when it suits you!
Come and browse our ever changing range of cards, ribbon and wrap.
Telstra & Optus prepaid mobile cards in stock.
Home delivery of all major newspapers, magazines & The Tarrangower Times.



Your local specialist
stationery store
Phone 5475 2433



• ALAN • CHERYL • STEVE LANG

CARTAGE & DRAINAGE CONTRACTORS

House Sites - Driveways - Postholes
General Trenching & Excavations
Septic Tank Installations
Sand - Soil - Gravel
(Own supply of Muckleford Gravel)



licensed drainer no: 39620

Ph: 5475 2218 0438 560 128