

Tarrangower Times

Est 1858

www.facebook.com/TarrangowerTimes

www.tarrangowertimes.com.au

Friday, July 16, 2021

Inside
this
week

People's Choice
Award.
Page 5.



Newstead
Uniting Church
Final Service.
Page 6.



Know Your
Local.
Page 9.



Earthquake damage

☆ Ellen and Roy noticed huge slabs of granite on their property had cracked and buckled after the earthquake.



Rental crisis in Maldon

Genna, a resident of Maldon for the past six years, has only days until she has to move out of her rental property with her 12-year-old daughter.

"There's nothing available and I don't know what I'm going to do," said Genna. "I have to stay in Maldon

because my daughter's halfway through her last year of primary school. I need to find a way to stay at least until the end of the year."

The family has no car so moving out of town and commuting to school and work in Maldon would be incredibly difficult.

Genna has also recently

been involved in a Facebook scam on the Castlemaine Real Estate page, where she was sent a message from someone offering to rent her a house in Maldon. The person provided photos of what appeared to be the inside of the house and what seemed to be a legitimate contract.

The man requested her

bank details, claiming a sense of urgency due to moving for work. Fortunately, Genna took the contract to a local real estate agent to check authenticity. She also asked around town if anyone knew of the man that had contacted her.

The house in question is owned by an elderly woman who Genna has made

contact with to ensure she is aware of the scam. Genna also posted on the Castlemaine Real Estate page warning others, and has received multiple messages

from people who have been involved in similar scams, with one woman being contacted by the same man, who has since been removed

Continued on page 3

ADVERTISEMENT



Federal Member for Bendigo

**LISA
CHESTERS MP**



PO Box 338 Bendigo 3552
Cnr. Williamson & Myer Sts, Bendigo 3550

T: 03 5443 9055 • F: 03 5443 9736
E: Lisa.Chesters.MP@aph.gov.au

www.lisachesters.org

@LMChesters • @LMChesters

Authorised by L. Chesters, ALP, 16 Myers Street, Bendigo

ADVERTISEMENT

**Maree
Edwards MP**

STATE MEMBER FOR BENDIGO WEST

Listening Posts are postponed until further notice.

My office is still available for assistance, please contact us on 5410 2444 or maree.edwards@parliament.vic.gov.au.

Suite 3, 16 Lockwood Road
(PO Box 1238),
Kangaroo Flat, Vic 3555
P: 5410 2444

www.mareeedwards.com.au

Authorised by M Edwards, 16 Lockwood Road, Kangaroo Flat
Funded from Parliamentary Budget



**During these
difficult times...**



**We are still here to help you,
24 hours a day, every day**

**mount
alexander**
FUNERALS

12 Campbell Street, Castlemaine
Ph 5470 5951 all hours
www.mafunerals.com.au



Community Diary

If you have a community event that you would like publicised in this Community Diary, please email: karen@tarrangowertimes.com.au or send details to us at PO Box 18 Maldon 3463, or drop a note into the letterbox in the office door to have it listed.

This is a free community service.
It is a good idea to advertise closer to the event.

EVERY DAY EXCEPT MONDAY

LIONS CLUB OP SHOP, 10am to 2pm. Enq: Jenny 0407 158 833.

FIRST SUNDAY OF THE MONTH

CASTLEMAINE FARMERS MARKET, 9am to 1pm at the IGA carpark in Forest Street. Enq: www.castlemainefarmersmarket.org or 0490 366 243.

EVERY SUNDAY

MALDON MUSEUM, Shire Gardens, 11.30am - 2pm. Admission \$2.50 adults, children free.

EVERY SUNDAY FORTNIGHT

MALDON PÉTANQUE CLUB games every second Sunday at St. Brigid's at 1.30 for a 2pm start. Enq: Sandy Noble 0429 006 130. Andrew Leckie 5400 1054.

SOCIAL PÉTANQUE is played on the Penny School pistes every second Sunday, alternating with MPC, at 1.45 for a 2pm start, unless rain is bucketing down, or it is over 30°. Enq: 0459 093 452.

SECOND SUNDAY OF THE MONTH

MALDON MARKET: Hand Made, Home Grown, 9am – 1.30pm. Bill Woodfull Recreation Reserve.

THE MALDON VINTAGE MACHINERY & MUSEUM is a haven for machinery enthusiast's before and after the industrial revolution, but with more. Open 10am-4pm. Entry free - donations welcome. More info: Peter 0408 146 537.

LAST SUNDAY OF THE MONTH

CASTLEMAINE REPAIR CAFE, 10am - 1pm at Castlemaine Community House ,30 Templeton St. Enter from back door. Bring along broken electrical, general sewing repairs and maybe a cuppa and weekend paper in case you have to wait a while. No kitchen because of COVID. Gold coin donation. Learn to repair.

EVERY MONDAY

OCCASIONAL CHILDCARE, Maldon Neighbourhood Centre 9.30am-2.30pm. Enq. 5475 2093 or info@maldonncc.org.au.

ATHENAEUM LIBRARY, High Street, Maldon. 2-4pm. Suzette Phillips 0429 776 893.

MALDON BRIDGE CLUB at the Maldon Hotel, 1.15pm - 4.30pm. New players welcome including solo players. Enq: Danny Murphy 0430 733 782.

MALDON WALKING GROUP, starting at 9.30am for a gentle walk. Start at Maldon Neighbourhood Centre. No booking required. Cancelled if heavy rain or a Code Red Day. Enq: 5479 1000.

SOCIAL GOLF – 8.30am – 9 holes, free for members or \$10 green fees. Enq: maldongolf4u@gmail.com or Gay Reid 0413 013 766.

Tarrangower Times

Your Paper, Your Stories, Your News!

Est 1858

Available from: Maldon Newsagency, Castlemaine Newsagency, Newstead Country Store and Baringhup General Store.

4/93 High Street (PO Box 18), Maldon Vic 3463.
Tel: (03) 5475 2256
Email: editor@tarrangowertimes.com.au
www.tarrangowertimes.com.au
www.facebook.com/TarrangowerTimes
www.instagram.com/tarrangower_times

Other contact details:

Jade Jungwirth (Editor) 0408 594 246 or jade@tarrangowertimes.com.au
Karen Sloan (Design | Accounts) 0404 357 556 or karen@tarrangowertimes.com.au
Kerry Cain (Advertising) 0419 102 723 or kerry@tarrangowertimes.com.au

Guaranteed Office Hours:

Mon: 9am - 11am, Tues: 9am -12pm, Wed: 9am - 1pm.

ADVERTISEMENT LODGEMENT TIMES:

- Classifieds - 12noon Tuesday.
- Casual Display - 12noon Tuesday.

CONTRIBUTED ARTICLES:

- Community and News 12noon Tuesday.
- Late notices such as Births and Deaths by 10.30am Wednesday.

The Tarrangower Times is a member of the Victorian Country Press Association. The Times is owned by Tarrangower Times Pty Ltd, edited by Jade Junwirth and printed at Express Print, Morwell.

Copyright in this publication is held by Tarrangower Times Pty Ltd. Reproduction of any portion including advertisements and photographs without permission is not permitted and may constitute an offence. Copyright © 2021.

FIRST MONDAY OF THE MONTH

CRYPTIC CROSSWORD MORNINGS from 10am MNC Community garden.

SECOND MONDAY OF THE MONTH

THE MALDON GARDEN, FLORAL ART AND CRAFT CLUB, 2pm. Enqs: Carmel 0417 014 763 or Robyn 0418 544 966.

THIRD MONDAY OF THE MONTH

CRYPTIC CROSSWORD MORNINGS from 10am MNC Community garden.

THE MALDON GARDEN, FLORAL ART AND CRAFT CLUB, 2pm. Enqs: Carmel 0417 014 763 or Robyn 0418 544 966.

EVERY TUESDAY

COMMUNITY TRANSPORT SERVICE. Book the day prior for your door-to-door service. Trips within and to Maldon & Castlemaine in the morning, fortnightly trips to Maryborough and Kangaroo Flat. Phone 5475 2093. \$3 one way, \$5 return. More info: www.maldonncc.org.au/community-bus.

MAH JONG for seniors 10am-1pm at Maldon Community Centre. Beginners welcome. Enquiries: Kerry 0407 738 855.

COMMUNITY PANTRY Delicious home-delivered meals. Order info@maldonncc.org.au or 5475 2093.

MALDON BOWLING CLUB, at 10am, as long as COVID restrictions allow.

MALDON BRISK WALKING GROUP, 7.30am meet at Maldon Neighbourhood Centre.

MALDON SOCIAL TABLE TENNIS, 1.30pm-3.30pm, Maldon Community Centre. Cost \$10 subscription to Maldon Seniors, \$2 donation on the day. Enq. Anne 0425 859 662.

MALDON CROQUET CLUB, 9.30am. New members welcome. Enq. Ray Austin 0448 338 251.

YOGA AND RELAXATION, Maldon Neighbourhood Centre Hall. Evenings 6-7.30pm. Come and try, first class free. Enq: Andrea 0427 772 878.

FIRST WEDNESDAY OF THE MONTH

NUGGETTY LAND PROTECTION GROUP meeting. For further info contact Christine Fitzgerald – ckfitz5@bigpond.com – 0419 347 408.

EVERY WEDNESDAY

ATHENAEUM LIBRARY, High Street, Maldon. 2-4pm. Enqs Suzette Phillips 0429 776 893.

CANASTA for seniors 10am at Maldon Community Centre. Beginners welcome. Enquiries: Lyn 0409 566 551.

COMMUNITY LUNCH, 12 noon, Maldon Community Centre. Delicious two-course lunch. Every Wed. during school terms. All welcome. \$5. Enq: 5475 2093.

EASY STEPS TO FITNESS AEROBICS, 9am - 10am Maldon Neighbourhood Centre, beginners welcome. Starts 5 May. \$10 concession, \$15 full. Enq: Sean 0419 210 043.

HATHA YOGA WITH WENDY, 5 – 6.30pm at Maldon Neighbourhood Centre.

MALDON MEN'S SHED, 10am to 4pm at rear of Vintage Machinery Museum (accessed from Phoenix Street). All welcome. Contact Barry Murfett 0403 352 753. (Note: Closed on days of Total Fire Ban or over 38°).

MALDON MUSEUM, Shire Gardens, 11.30am - 2pm. Admission \$2.50 adults, children free.

THE MALDON VINTAGE MACHINERY & MUSEUM is a haven for machinery enthusiast's before and after the industrial revolution, but with more. Open 11am-3pm. Entry free - donations welcome. More info: Peter 0408 146 537.

YOUNG AT HEART PLAYGROUP, Maldon Neighbourhood Centre 10-11.30am. Enq. 5475 2093 or info@maldonncc.org.au.

EVERY WEDNESDAY FORTNIGHT

ART & CRAFT GROUP, 1.30pm – 4pm at Maldon Neighbourhood Centre.

EVERY FOURTH WEDNESDAY

MALDON CEMETERY FRIENDS WORKING BEE, 9.30am - 11.30am. Please come out and help get our historic cemetery clean, weed free and blooming! Our cemetery grounds and buildings need a little care and attention from some willing helpers on a regular basis. Training, equipment and morning tea provided. BYO Hat, sunscreen, insect repellent and especially gardening gloves.

EVERY THURSDAY

TAI CHI EXERCISE GROUP (CHIRP), 10.30-11.30am at Maldon Neighbourhood Centre (NB changed start time). Contact Jenny 0417 475 270 to register.

MALDON BOWLS CLUB, Bowls practice anytime Thursday until dark.

MALDON BRIDGE CLUB, 12.45pm to 4.30pm at the Maldon Hotel. New players welcome including solo players. Enq: Danny Murphy 0430 733 782.

MALDON CROQUET CLUB, 9.30am. New members welcome. Enq. Ray Austin 0448 338 251.

MALDON CHESS CLUB, 10.30am. Do you play? Come along. Do you want to learn? Come along. For enquiries contact John 0438 012 076.

OASIS KID'S CLUB, 3.20pm-4.45pm Maldon Baptist Hall, Edward Street. All primary aged children welcome. Free. Enq Gavin & Julie 5475 2338 or 0458 084 728.

SECOND THURSDAY OF EVERY MONTH

FREEMASONS MALDON meet at 7.30pm. Enq: Peter 5472 2202.

EVERY FRIDAY

ATHENAEUM LIBRARY, High Street, Maldon. 2-4pm. Enqs Suzette Phillips 0429 776 893.

CHAIR YOGA, 11am – 12 noon at Maldon Neighbourhood Centre.

COMMUNITY PANTRY Delicious home-delivered meals. Order mtalexcommunitypantry@gmail.com or phone 0472 537 866.

COMMUNITY TRANSPORT SERVICE. Book the day prior for your door-to-door service. Trips within and to Maldon & Castlemaine in the morning, fortnightly trips to Maryborough and Kangaroo Flat. Phone 5475 2093. \$3 one way, \$5 return. More info: www.maldonncc.org.au/community-bus.

MALDON MUSEUM HISTORY RESEARCH CENTRE, 10am - 1pm.

MALDON SOCIAL WALKING GROUP, Gentle walking. 9.30am meet at Maldon Neighbourhood Centre.

HATHA YOGA WITH WENDY, 9 – 10.30am at Maldon Neighbourhood Centre.

IMT - ARE WE BEING HEARD? You can listen to us on your phone you know. Listen on the TuneIn Radio App- MAINfm 94.9, or on your computer <http://mainfm.net>, OR SMS during the program on 0488 863 186. Please SIGN Your SMS.

SOCIAL GOLF – 8.30am – 9 holes, free for members or \$10 green fees. Enq: maldongolf4u@gmail.com or Gay Reid 0413 013 766.

SECOND FRIDAY OF EVERY MONTH

MALDON RSL SUB-BRANCH Monthly meeting in the Maldon RSL Hall behind the Athenaeum Library at 3pm. All Service and ex Service members are welcome to attend. No meeting in January.

LAST FRIDAY OF EVERY MONTH

MAREE EDWARDS LISTENING POSTS are postponed until further notice. My office is still available for assistance, please contact us on 5410 2444 or maree.edwards@parliament.vic.gov.au.

EVERY SATURDAY

ATHENAEUM LIBRARY, High Street, Maldon. 9.30am - noon. Enqs Suzette Phillips 0429 776 893.

MALDON MEN'S SHED, from 9am to 12pm at rear of Vintage Machinery Museum (accessed from Phoenix Street). All welcome. Contact Barry Murfett 0403 352 753. (Note: Closed on days of Total Fire Ban or over 38°).

MALDON CROQUET CLUB, 9.30am. New members welcome. Enq. Ray Austin 0448 338 251.

THE MALDON VINTAGE MACHINERY & MUSEUM is a haven for machinery enthusiast's before and after the industrial revolution, but with more. Open 10am-4pm. Entry free - donations welcome. More info: Peter 0408 146 537.

SATURDAY 26 JUNE TO FRIDAY 30 JULY

MALDON IN WINTER, more details: www.maldon.org.au/wp-content/uploads/2021/06/MiW-2021-program.pdf

MONDAY 19 JULY

THE MALDON GARDEN FLORAL ART AND CRAFT CLUB MEETING. Speaker: Greg Block Floral Art Demonstration 2pm at the Community Centre, members to bring a plate to share.

FRIDAY 23 JULY

TARRANGOWER DEMENTIA ALLIANCE DEMENTIA FRIEND SESSION at 10.30am at the Athenaeum Library. Tea and coffee will be available. Bookings are essential: 5475 2093 or email info@maldonncc.org.au.



Bendigo Health Psychiatric Services Regional Triage
24 hour emergency –

1300 363 788

EMERGENCY COUNSELLING SERVICES

Kids Helpline: _____ 1800 55 1800

Lifeline (24 hours): _____ 13 11 14

Mensline Australia: _____ 1300 78 99 78

Parentline: _____ 13 22 89

Suicide Helpline: _____ 1300 651 251

Beyondblue: _____ 1300 22 4636

Rental crisis in Maldon

Continued from page 1

from the page.

Another long-term resident of Maldon, Liz Butterworth, is also struggling to find anywhere local to rent. She has lived in Maldon for 17 years and has been in her current rental property for three of these. Due to the owners selling Liz and her family have to find a new home as soon as possible.

Most nights will find Liz scrolling through rental properties, trying to find somewhere suitable for her, her husband and daughter to live.

"I'm more worried about the families with small children. If there's nothing to rent locally and the families have to move elsewhere, then the children are forced to leave their school behind," said Liz.

Liz has applied for four properties over the last few months, looking in Maldon, Castlemaine, Harcourt and Bendigo, in order to try and keep the family close to work, friends and community.

"You get knocked back so many times and it's hard to keep looking knowing there's nothing much out there. And the application process is crazy," said Liz. "I haven't ever given that much information to the ATO or to Centrelink.

"I don't know what we'll do if we can't find anything. We'll just have to keep trying."

Stephen Gardner, Mount Alexander Shire Council representative for Tarrengower Ward, told the *TT* that he is discussing declaring a housing emergency with his fellow councillors to see if they can raise the profile of the issue higher up in the Australian Government.

"Housing affordability and the cost of rental is becoming a crisis in my opinion, but there are limited options for Council to drive down the cost of housing and rents. We are experiencing an influx of people from Melbourne driving up prices, which makes it hard for local people on limited incomes to live here," said Cr Gardner. "Council have been looking at what we can do including conducting research with Melbourne University to identify possible social housing options and is lobbying the Victorian government to access their recently announced social housing fund. Council owns vacant land in Maldon and across the shire which may be suitable.

"We are currently reviewing the rating strategy and how we can

persuade investors to make houses available for rent and possibly increase rates on Airbnb so they can be turned into permanent homes," said Cr Gardner.

"We are also looking at the planning scheme to see if it's possible for new houses but particularly mindful that we don't want over development."

"It greatly concerns me and we are trying to do whatever we can but it requires substantial policy changes and investment from the Victorian and Australian governments."

Kirsty Mulholland from Waller Realty in Maldon told the *TT* that they currently have no rentals available in Maldon. At present she has three tenants that require a new house due to their rental properties being sold and they need to stay in Maldon because of work, family and community.

"All we can do is hope someone buys a property and will want to rent it out," said Kirsty. "More people are selling than renting. We are encouraging those that buy properties to rent them, but they want to live there themselves."

"I find it so hard, so many

people apply but only one person can have it. It's an awful situation," Kirsty said.

Leah Panos from Jellis Craig Castlemaine, told the *Tarrangower Times* that the rental crisis is not specific to Maldon and is being felt throughout regional Victoria.

"The recent changes to rental laws have made it less appealing to be a landlord, or rental provider as they are now known. This in conjunction with the boom in property prices has caused rental providers to re-evaluate their situation or portfolio and many have decided that selling their investment property in a heated market is the more appealing option," said Leah.

"The low supply and high demand for rental properties has seen an increase in rent prices in Maldon, so we are not just dealing with a lack of rental properties but more importantly a lack of affordable rental properties. We are receiving large numbers of applicants and inquiries for each property and some of these applicants are faced with the prospect of paying more than 50% of their gross income on rent."

Become a dementia friend



☆ Free Dementia Friend session at the Athenaeum Library.

THE Tarrengower Dementia Alliance's free Dementia Friend session will be at 10.30am on 23 July, with the Athenaeum Library kindly providing the venue and cuppas.

Liza Shaw who is Maldon Hospital's Health Promotion Officer, chairs the alliance and says that each person who completes this training brings Maldon a step closer to becoming a dementia-friendly community.

"For people living with dementia, performing daily tasks and maintaining social networks can sometimes be challenging. This is why building communities in which people living with dementia feel understood, accepted, and included, is so important," says Liza.

"This Dementia Friends session will help you to learn more about dementia and the challenges faced by people living with dementia. Participants will also

learn how to help people with dementia remain connected."

"The session will be delivered by alliance members Philippa Calwell and Claudia Meyer. Tea and coffee will be available."

All are welcome to attend, but bookings are essential as numbers are limited. You can book by calling Maldon Neighbourhood Centre on 5475 2093 or emailing: info@maldonnc.org.au.

Bursting at the seams



☆ Eight carriages long and using both the diesel and steam engines.

IF you were out and about in Maldon last Sunday you would have found yourself hard pressed to find a carpark. The town was bustling with tourists visiting the local shops, the monthly market, the Maldon Swap Meet and taking a ride on the Victorian Goldfields Railway (VGR).

Brendan Barry, a volunteer at VGR for the past 15 years, working in the shed as a fitter and getting 'roped' into driving the train on weekends, told the *TT* that it was a busy day for the VGR.

"We've had a 175 visitors on the train today, with eight carriages, requiring

both the diesel and steam engines to pull them," said Brendan. "We could fit more passengers, but due to COVID we've had to make sure everyone's spread out. Back when I first started volunteering at VGR we used to only have two or

three carriages, so it's great to see so many."

Mark Blythe, organiser of the Maldon Swap Meet said he was very happy with the turn-out, with 300 stalls and 1000 visitors to the Maldon Racecourse and Recreation Reserve.



☆ Rob Noyce, self proclaimed 2nd greatest Aussie picker, travelled from Clare in SA for the Swap Meet.

"It went very well. The weather was fantastic and I'm in love with the venue," said Mark who also organises the Maldon Antique Fair. "It's great for a one day event, although it wouldn't work as well for a two dayer when more people camp overnight and there's not enough facilities. Plus in summer it would likely turn into a dustbowl."

"I'd really like to thank everyone involved in the

day. CERT for keeping everyone safe and the Maldon Fishing Club did a great job keeping everyone fed. The Machinery Museum for lending equipment and a big thank you to the tourism section of the Mount Alexander Shire Council, Lucie Curry Cheene and Natalie Parsons, who've been great to deal with and very supportive."

More photos page 12.

STEVE BARTY GAS

Proudly servicing Maldon and surrounding districts in:

**Domestic LPG deliveries • LPG appliances
Forklift gas • Industrial and hospitality gases
BP oils and greases**

For all your LPG needs, contact Steve Barty

5472 1262 OR 0417 524 713

MALDON *Quality* BUTCHERS

**Locally farmed
bio-dynamic beef &
lamb
Free local delivery**

Meat voucher is
on hold until
further notice.

19 Main St. Ph. 5475 2271

EDGE Exhibition Launch



☆ “I’m more comfortable behind the camera rather than in front of it!” Artist Arrayah Loynd, photographed at her exhibition opening last Saturday.

IT was a full house at EDGE Galleries last Saturday afternoon for the opening of an exhibition of photos by Melbourne-based artist Arrayah Loynd. The exhibition was opened by Joel Rainford (Program Coordinator Photography & Visual Arts, RMIT) and Eva Addensall, who has a graduate degree in Politics and Gender Studies.

Gender and politics are indeed two key themes of Arrayah’s exhibition, which is titled *More or less (in)complete*. In the light of the Me Too movement - both globally and closer to home - these photographs have much to say about patriarchal society’s domination of women’s minds and bodies. Women will immediately relate to many of these images and their meanings, while men can potentially learn a great deal. It is, therefore, a must-see exhibition - the

photographs themselves are the work of an accomplished artist who is in control of her medium, while the message is powerful and irresistible.

This writer’s preferred work? A compelling study of 11 women, whose bodies, eyes or mouths are all cancelled in some way, and are emblazoned with words that are often used against women: Calm down. Hormonal. Hysterical. Don’t try to be clever. Difficult. Sound familiar? This work, titled *Difficult*, was short listed for the Nillumbik Prize for Contemporary Art, and unsurprisingly won the People’s Choice Award.

All praise to the EDGE’S owners Simon Dow and Brad Hooper for staging another excellent - and controversial - photographic exhibition. You have until 15 August to view this exhibition - don’t miss it.



Australian Government

ARM yourself AGAINST COVID-19

A COVID-19 vaccine is your best defence and our only way forward. Now’s the time to arm yourself, your family, your friends, your work mates, your community – someone you love.

Book your vaccination online or call 1800 020 080.



Find out when you can get vaccinated australia.gov.au

Authorised by the Australian Government, Canberra.



☆ A selection of images on show at the latest exhibition at the EDGE Galleries.



☆ This impressive work, titled *Difficult*, won Nillymbik Art Prize’s People’s Choice Award.

Best Hair Ever!



A two-dimensional photo can’t really do justice to this hair style, modelled by Majella and seen at the Edge Galleries opening on Saturday - it really needs the 3D treatment.

Short on the back and sides, purple on top with a contrasting orange border. Cutting edge hair stylist and colourist? \$500 worth? “No,” Majella said. “I did it myself at home with the help of my house-mates.” With her mum and grandmother, Majella had travelled from Melbourne to check out the opening of Arrayah Loynd’s exhibition.

Seen anything
interesting?
Call the *Times* on:
5475 2256

People's Choice Award



☆ Winner of the People's Choice Award: The CWA indigenous themed window display hosted by Beaton's.

WEREN'T the shop windows great? Such a fantastic response this year, with 17 entries.

Shining a spotlight on women's mental health



WITH one-third of Australian women living in rural and regional areas, women play a crucial role in the growth and future of regional economies and communities.

Unfortunately, women experience some mental health conditions at higher rates than men. Women are often juggling the demands of trying to be a worker, parent, partner and friend, which can be nothing short of exhausting.

Animal Health company Zoetis, in partnership with Beyond Blue, will continue to support the mental health challenges faced by people living in rural Australia through its commitment to raise up to \$100,000 for the Beyond Blue Support Service in 2021.


Zoetis works closely with rural Australia through interactions with the country's farming community, agricultural stores,

Continued on page 13

It was particularly lovely to hear the comments from visitors to the town, who definitely appreciated the efforts of all the traders. We at Maldon Inc want to thank all the businesses who participated, for really making the town shine over the school holiday period. And thank you to everyone who voted for their favourite in the People's Choice!

The winner of the 2021 Shop Window Competition, People's Choice Award, is... the CWA entry, hosted by Beaton's Stores! Out in front by a proverbial country mile.

We will be in contact shortly to present your prize money! (Kindly sponsored by Waller Realty.)
Kate Gamble




Maldon Vet Clinic

IS YOUR PET TRYING TO TELL YOU SOMETHING?

To find out more - visit us to pick up your **FREE Arthritis Awareness Pack**

Tues - Fri 9am - 5pm | Ph 54 751 751
48 Hornsby Street Maldon
www.maldonvet.com.au






Thompson Family Funerals

NFPA (03) 5472 2202
123 Mostyn St, Castlemaine 3450

Compassion, Respect & Understanding

Prearranged & Prepaid Funerals available.

Peter Thompson and family of **Thompson family Funerals** Proudly serving the people of Castlemaine and district since 1950
~ The family that care ~



Arthritis Awareness



Photo by Alec Favale on Unsplash

WE'VE now entered the second month of our Arthritis Awareness promotion, with many information packs and samples going out the door.

A number of patients have started their Synovan injections, 4cyte supplements and Royal Canin mobility diet, with excellent results already! There are still some packs remaining so if you suspect your older dog or cat may be showing signs of arthritis, feel free to call by the clinic to find out more.

While the physical signs of arthritis can be obvious to see, animals will also exhibit behavioural changes when in pain. These may not always be so easy to pick up, so here are some examples to watch out for:

- Restlessness at night – during the day while they're active and their joints are mobile, arthritic pain may not be as noticeable. However, having to lie still at night puts pressure on certain areas and they may struggle to get comfortable.
- Loss of appetite – going off food may be a sign that they're struggling with pain, especially if they normally eat well.
- Aggression – unusual or recent aggressive behaviour towards other animals or people within their household may be a

sign of chronic pain.

- Decreased play/sociable behaviour – this may sometimes be confused with slowing down due to old age, however if this is a recent change in behaviour - especially if they are normally very playful - then it may indicate an underlying issue.
- Aversion to being patted or touched – cats may avoid being brushed, dogs may avoid being patted or touched.
- Inappropriate toileting

– due to mobility issues and associated pain, cats may start soiling outside of the litter tray when they previously had no issues. Likewise, dogs may start to wet the bed or toilet inside the house.

Of course, these pain indicators may not necessarily be related to arthritis, as there are many other causes of pain eg. dental disease, bladder stones, abdominal pain etc.

If your pet exhibits any behaviours that are out of the ordinary, especially recent changes in behaviour, it's always a good idea to have them checked over.

Pets will tell us a lot of information at home rather than in the clinic, that's why it's important that your vet spends the time gathering history and listening to owners' concerns, as this is just as valuable as doing a physical exam and ordering diagnostic tests.

Have you gone to the website and downloaded our newsletter? Issue 1 is now available online and in print at the clinic – pick up your copy today and read about 'the science behind Synovan'!

Andrea Khong
Maldon Vet Clinic

EDGE GALLERIES
MORE OR LESS (IN)COMPLETE
ARRAYAH LOYND
PHOTOGRAPHIC ARTIST
JULY 10 - AUGUST 15

weekends 11 - 3 or by appointment
35 Main St Maldon



This powerful exhibition is probing, personal and compelling springing from a strong feminist experiential perspective.

*'A woman is like white cloth, once soiled, it can be washed but never be made clean again.
A man is like gold, once soiled, it can be washed and shines like new again'* **Khmer Proverb**

Community Bank
Maldon, Newstead & Dunolly

**Small town.
Big Bank.**

Everything you need, right here

We deliver the products and technology you'd expect from a big bank, plus the personal service you wouldn't.

As one of Australia's biggest banks, our heartland remains firmly local. As does our focus on you and the quality banking products you need.

Feel good about who you bank with. Try Bendigo.

Find out more. Call 5475 1747 or search Bendigo Bank Maldon.

**BANK
LOCAL**

Bendigo Bank

Bendigo and Adelaide Bank Limited ABN 11 068 049 178, AFSL/Australian Credit Licence 237879 A1455027 OUT_2056504_10/05/2021

Newstead Uniting Church Final Service



☆ 1. George Milford and the kaleidoscope.
Photos courtesy Jim Foley

MEMBERS of the Newstead Uniting Church, Castlemaine and District Parish and friends attended the final service on 27 June 27. It was a very poignant service led by Rev Sarah Tomlinson, with hymns, prayers and shared memories including those of the Rev Rod Horsfield who came to Newstead in 1967 as a young trainee minister. Peter Moloney moved us with his singing. Preacher, George Milford, using a kaleidoscope began his message, “Many thoughts crowd in when we think of the happenings in this place over the years, and the after-effects of those happenings. So many thoughts, jumbled together,



☆ Peter Moloney.

so that to look back upon them is like looking into a kaleidoscope. You recall the kaleidoscope. Place it to your eye and a beautiful pattern is to be seen. Give the lens a half turn and another pattern falls into place, another turn and a still more beautiful view is given.” George, holding every-one’s attention, used his scope to recall many anecdotes and stories from the first service conducted under a tree in the mid 19th century. The final hymn was the first hymn sung at the first service in the church on September 15 1907. In the *Newstead ECHO* at that time, it stated, ‘The words of the first hymn, *All people that on earth do dwell*, was sung lustily



☆ Rev Sarah giving a blessing after closing the church door.

by all present to that grand tune of *Old Hundred*; it could not fail but to impress.’ Sarah invited us to sing it with gusto which we did even with masks. When Fay White led us with a sung blessing as everyone left the church building, the door was closed for the final time and the bell was rung by Ray Stevenson. Members then gathered for morning tea and the sharing of the farewell cake. Members of the Newstead congregation will continue to gather locally with Rev Sarah.

Earthquake damage



☆ Roy’s castle on the hill.



☆ Mountains of granite on the old disused quarry at Roy and Ellen’s property.



☆ The earthquake cracked and buckled massive slabs of granite.

ELLEN and Roy Howell have lived in Maldon’s township for 35 years. They also own a large property on the outskirts of town with an old disused quarry and a half built house that Roy fell in love with.

After the earthquake a few weeks back, Ellen and Roy discovered that big

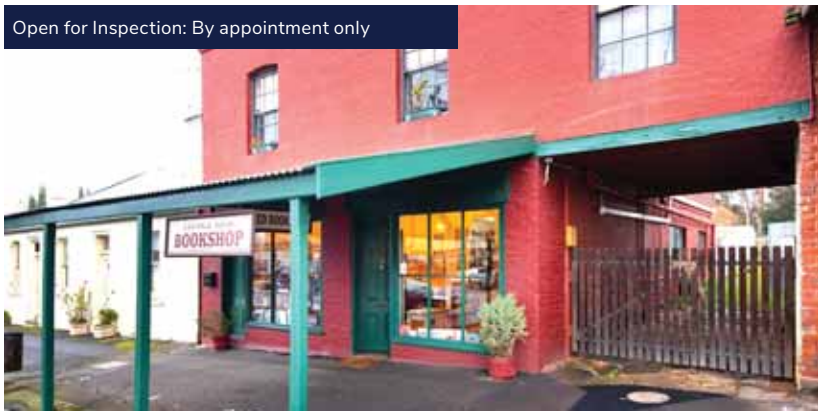
slabs of granite had been cracked and buckled. “It’s almost like they erupted,” Ellen said. “We had the family up from Melbourne and we went for a look and couldn’t believe how much of an impact the earthquake had on massive, slabs of heavy granite.” According to Roy and Ellen the granite from the quarry has been used on Government House in Canberra and on the Sydney Harbour Bridge. They’ve asked around and been told that even though there’s miles of granite spread over two hills, and it’s worth quite a bit of money, it’s not cost effective to get it out. Ellen and Roy have been married for 70 years and have worked together in a building business, with Roy doing the building,

plumbing and plastering and Ellen doing the clean up. This eventually lead to Ellen having asbestosis as a result of renovating and cleaning up old houses. Roy at 92, still comes out to the property a few times a week to work on the house. Over the years he’s added a second storey and with the help of family members, concreted the dirt floor. “He’s been coming out and working on the house for years,” said Ellen. “About eight to ten years ago he had a bad accident. Roy fell off the scaffolding he was working on and fell onto the granite. I found him about two hours later, unconscious. He broke everything; his eye socket, shoulder, ribs, punctured lung and had seven pins put in his arm. I went up to the prison and asked them to

ring an ambulance that took him to Bendigo Hospital and then they flew him in a helicopter to the Alfred Hospital. It only took him a few months to heal.” “No sense, no feeling,” laughs Roy. The couple’s large family often come and stay at what Roy fondly refers to as ‘The Castle’ and now his sons do a lot of work on the place too. “There will always be work to be done,” said Roy. ‘Luckily we’ve got children and grandchildren who can keep it going.’

Have you noticed anything strange or altered since the earthquake? Contact Jade at the Tarrangower Times on 5475 2256 or email Jade@tarrangowertimes.com.au and tell us your story.

Open for Inspection: By appointment only



Maldon

67-69 High Street

\$769,000

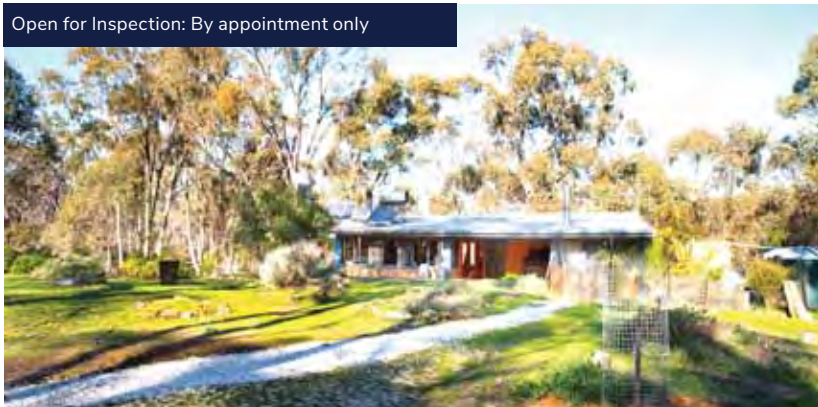
HISTORIC HORNSBY'S BUILDING circa 1900 - DUAL SHOP AND 2 BEDROOM APARTMENT LIVING IN THE HEART OF MALDON

2

1

Rarely do opportunities present themselves with a freehold shop and 2 bedroom dwelling being offered for sale in the heart of Maldon. This solid brick double fronted shop and residence sits behind its pretty heritage red façade with wide verandah over the footpath. Steeped in history this historic freehold investment is built on land first owned by J.C. Hawkey in 1854 and built by local entrepreneur the Hornsby's in 1900. The inviting character filled retail shop of approx. 65sqm is split level with 4 rooms, joined by 2 arched brick walls, there are 2 working fire places, stunning Baltic flooring, air conditioning and large street windows.

Open for Inspection: By appointment only



Muckleford

78 Cruits Lane

\$735,000 - \$745,000

BEAUTIFUL BUSH TRANQUILLITY – 10 ACRES WITH A MUDBRICK COUNTRY HOME PLUS SECOND DWELLING

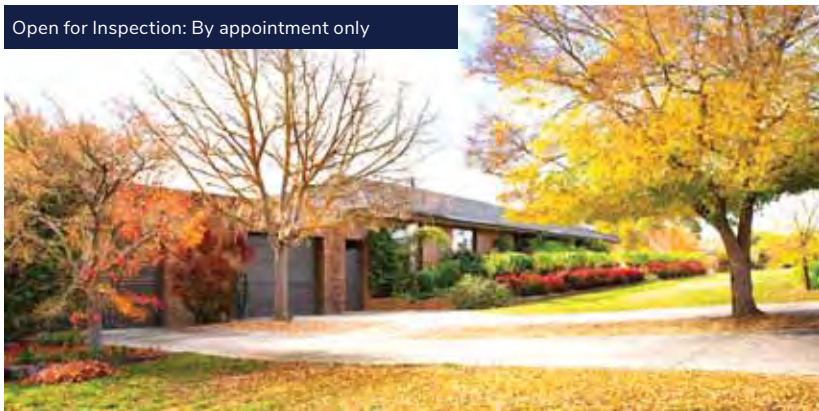
4

2

2

Set on 10 acres with eucalypts, this peaceful country property is just 12km to Castlemaine and 136km to Melbourne. The property offers a great country lifestyle with Muckleford Forest at your doorstep and Castlemaine just a hop, skip and a jump away. The property has 2 good size dams, a seasonal creek, firewood supply, off-grid power, a chook run and many plantings of Oaks, deciduous trees and Casuarinas. The Main Mudbrick Residence features 4 bedrooms, an open plan kitchen with walk-in pantry, gas plus slow combustion cooker, spacious bathroom, and much living space with a combustion fire, exposed Oregon and hardwood timbers and windows.

Open for Inspection: By appointment only



Castlemaine

34 Wheeler Street

\$875,000

WONDERFUL WHEELER STREET LOCALE WITH GARDENS AND GARAGING One Owner – beautifully cared for Brick Home, so close to the town centre!

4

2

4

Positioned on Wonderful Wheeler Street, just an easy 700m from the Supermarket and shops, this special long held property can provide you a central convenient life-style without the compromise. The spacious brick veneer home has been thoroughly renovated and is set on a 983m² allotment with access from both Wheeler and William Streets. The home offers a large front verandah entry and a rear garden room outdoor entertaining area, 4 double bedrooms with robes and new carpets, main and ensuite bathrooms, 2 living areas plus a sun-room with garden outlook, a modern kitchen with dishwasher and stainless steel oven, plus meals area.

Open for Inspection: By appointment only



Campbells Creek

4 Chapel Street

\$525,000

1800s BRICK & TIMBER CHARMING COTTAGE - Level garden and much to love!

3

1

1

Quietly tucked away on Chapel Street, in the heart of Campbells Creek, this charming brick and timber Miners Cottage is on a level garden of 575m². The home has a garden verandah entry, central hallway with original archway, 3 cottage-double bedrooms, a cosy lounge room with a gas heater in the fireplace, gas kitchen with euro laundry and timber floors, plus a sunny sitting-dining area with large windows overlooking the garden. Offering great character with further room to improve, this home is tenanted until early February 2022 at \$290.00 per week.

Are you up to date with the new tenancy laws?

Navigating the rental market can be confusing.

Speak to us today to get the right advice.



Rob Waller

Director/Sales

rob@wallerrealty.com.au

0418 571 130



Narelle Waller

Director/Leasing

narelle@wallerrealty.com.au

0408 571 131



Blasi Mulholland

Senior Asset Manager

blasi@wallerrealty.com.au

0417 311 733



Kirsty Mulholland

Assistant Property Manager

rentals@wallerrealty.com.au

03 5475 1055

BENDIGO - YOUR COMMUNITY NEEDS YOU!

VOLUNTEER WILDLIFE RESCUE & TRANSPORT TRAINING

BENDIGO NEIGHBOURHOOD HUB
155 CROOK STREET, STRATHDALE 3350

Saturday 14 August 2021

9:30am - 4:00pm



You are invited to become a trained volunteer wildlife rescuer in your community. This training covers rescue techniques for common species in your region. This is an opportunity to meet with and learn from experienced wildlife rescuers.

BOOKINGS ESSENTIAL

Places are limited to the Bendigo region and surrounding areas.

To register, visit the Wildlife Victoria website here:

<https://www.wildlifevictoria.org.au/rescue-and-transport-training-registration>

\$90 per person

WILDLIFE
VICTORIA



☆ Mount Alexander Business briefing discussing climate change.

Photo courtesy Craig Gaston

An occasional column on the future of our region by Melanie Scaife

Maldon is home to many locally run businesses, some clearly visible on Main and High Streets, others tucked away in home offices, clinics and studios or operating on the town's outskirts – wineries, tourist accommodation and farms producing cherries, honey and flowers.

Peter Strang's business, Willow Cottage, falls into the latter category and is the reason he attended Business Mount Alexander's briefing on the business of climate change last month, keen to find out how to grow his business while reducing its carbon emissions.

"At the moment I'm providing energy generated by solar power and I've just signed up for a [State Government] subsidised battery – covering my own power needs, but also for people staying in the cottage," says Peter. "We use recycled materials as much as possible and encourage people to recycle while they're staying. We have 'keep cups' for guests to use, we bulk buy soap and shampoo to minimise waste, we generally try to have a low-impact business."

The briefing offered Peter and other business owners from Maldon and across the shire access to advice from experts from Sustainability Victoria, the Department of Environment, Land, Water and Planning, Sustainable Australia Fund, EnviroShop Newstead and Cola Solar,

among others.

While solar and battery rebate schemes are perhaps better known, the briefing highlighted several other government programs on offer to business owners in Mount Alexander Shire to help them cut business energy costs, reduce emissions, save money and contribute to a sustainable future, including for those who rent premises, run farms or operate as sole traders.

These included; the Business Energy Advice Program, offering free independent assessments to help small businesses get better energy deals and increase their efficiency. The Victorian Energy Upgrades Program, unlocking discounts on lighting, water efficiency, hot water, space heating and cooling; and the Central Victorian Greenhouse Alliance's Small Business Energy Saver Program, offering savings on energy-efficient upgrades, from reverse cycle air conditioners to display cabinets, fridges and freezers.

For farmers, Agriculture Victoria's On Farm Energy Grants are designed to help them invest in equipment to improve energy efficiency to boost competitiveness and protect local jobs.

Protecting and growing local jobs is something that can only benefit Maldon.

"Short-term accommodation is quite a big business in Maldon. Maldon Getaways alone lists just short of 20 properties," said Peter.

"Maldon needs a bit more activity. You wouldn't think so on a Saturday morning, but mid-week it can be quiet, and there's an advantage in promoting a clean, green offering, for Maldon to be seen as an attractive destination. The young couple who stayed just this weekend at the cottage commented that they see this as a positive."

For more information visit:

- businessenergyadvice.com.au
- victorianenergysaver.vic.gov.au
- cvga.org.au
- solar.vic.gov.au/business
- agriculture.vic.gov.au
- sustainableaustraliafund.com.au

Melanie Scaife is a Maldon resident and graduate of the ADAPT Loddon Mallee Region Climate Leadership

"I grew up in the bush, on a farm outside of town. I know how country towns work. People don't judge you because you're transgender, they judge you on what you do," said Josie.

And boy has she done a lot!

In 1974 Josie worked as a geology assistant in the Northern Territory, before working as a forestry tech officer in the ACT.

Josie has worked as a builders labourer, steel fixer and grave digger!

She then moved into a career in writing, film production and journalism and was the head of writing at AFTRS University in Sydney before becoming the Director of the Australia Council for the Arts Literature Board at which time Josie, born a man, became a woman.

"There was a lot of trauma associated with the gender change while I was working as the director,

so when my friends, Jim and Pam from way back in the 60s, needed someone to house sit in Maldon for three months I jumped at the chance. I arrived in Maldon on a cold dark night in August 2011 with some clothes, books and my guitar.

"I started filling in for Viv as Editor of the *Tarrangower Times* while she was on leave, and when my friends came back from their trip they discovered I knew more people in Maldon than they did," laughed Josie. "I also began my own furniture business. I originally started by making a few pieces for myself and then others began asking if I could make things for them. My knowledge came from my dad who was a joiner and carpenter as well as a musician and farmer."

At present Josie is focussed on her music career, playing guitar and piano, mostly jazz, and she will be performing with

Kaz McKay at the Maldon Community Centre on 7 August.

When she's not in her studio rehearsing you can find Josie in her impressive garden.

"I get a big kick out of growing veggies. I think it's genetic. I once grew some really impressive celery and later learnt that my great uncles were known as the 'celery kings' of the Adelaide Central Market."

Amongst her many other achievements, Josie has written a number of books, including a memoir that initially began as a diary to help clarify her thoughts, particularly in relation to the pain of gender transition and the loss of family.

"I've always tried to be open about myself. Being transgender might be unusual but there's nothing wrong with it. We're essentially no different to anyone else."

Jade Jungwirth

Call for winter clothes donations

AFTER a particularly busy lead up to winter, regional Victoria's Vinnies Shops are calling for more donations of warm winter clothing of good-quality jackets, overcoats, jumpers, scarves and trousers, which will go on to serve local communities.

The call-out to regional areas in particular is due to lockdowns last winter when people were not buying seasonal clothing as normal, which affected donations.

Regional areas also generally experience lower

temperatures than metropolitan, so the demand for warmer clothes has been higher rurally.

Vinnies Victoria keeps stock transportation to a minimum to keep costs and emissions low to save money and maintain their sustainability standards, so they prefer to source donations close to where they are needed as much as possible.

Jeff Antcliff, Vinnies Victoria's Executive General Manager of Commercial Services, says: "We know that our local communities love to help each other

out, so we hope that our regional friends can find the time to go through their wardrobes and bring any cosy winter clothes they are no longer using into their nearest Vinnies Shop during opening hours.

"We always encourage people to give their donations directly to one of our volunteers at the counter so we can say 'Thank you'.

"Our regional Vinnies Shops kept the flag flying for us through nearly all of last year when our metropolitan shops had to close and we want to be

well-stocked with good-quality winter clothes this year for our loyal customers in those areas.

"All profits from Vinnies Shops go back into their local communities to fund our welfare services that help people experiencing homelessness or who are struggling to put food on their tables or pay their rent, utility and medical bills. Every cent spent in a Vinnies Shop supports our good works for people in need."



ROBERT COX MOTORS
HIGH STREET, MALDON, 3463

Robert Cox

SPECIALISING IN MECHANICAL REPAIRS

- Lubrication Service • Smash Repairs • Tyres
- Windscreen Replacement • Batteries • Parts
- Disc and Drum Brake Machining
- Wheel Alignments

* LICENSED MOTOR VEHICLE TESTER *

TELEPHONE 03 5475 2381



BRACKEN LAWYERS

A boutique legal practice specialising in:

- Conveyancing • Property Law
- Commercial Leases • Guarantee and Loan advice
- Business Sale and Purchases

Based in 'The Hub' 3/233 Barker Street, Castlemaine and servicing Maldon by appointment.

Phone 5470 5062 or email ian@brackenlawyers.com

www.brackenlawyers.com

CASTLEMAINE FINANCIAL SERVICES

- Accounting & Taxation
- Business Services
- Financial Planning
- SMSF Advice

12 Mostyn Street, Castlemaine. Phone: 5470 6100

TT Dine Out Directory

BERRYMAN'S CAFÉ & TEA ROOMS - MALDON

30 Main Street - 5475 2904
Open 7 days
Full menu is available to take away.
We also have some individual home-made frozen meals and we will soon be offering them in family size portions.

DIG CAFE - NEWSTEAD

13 Lyons Street - 5476 2744
Well known, well loved cafe with excellent food and coffee, fully licensed. Open 8.30am until 3.30pm each day and Friday nights for takeaway pizza from 5pm until 8pm. Bookings advisable at present on 5476 2744. www.digcafe.com.au

MALDON ROSE CAFE - MALDON

6 Main Street
(formally Zen Cafe)
Everything baked on premise.
All Press coffee, Harney & Sons tea.
High teas available.
Open 10am - 4pm Saturday & Sunday.

MALDON TAKEAWAY - MALDON

10 Main Street - 0476 887 062
Open 11am-7ish every day.
Fish and Chips, burgers, hot dogs, loaded fries, souvlakies, pizza, coffee and happy to be here service.



BULL & MOUTH HOTEL - MARYBOROUGH

119 High Street - 5461 3636
Open for Breakfast, Lunch and afternoon tea
Sunday - Tuesday 9am - 5pm and
Breakfast, lunch, afternoon tea and dinner
Wednesday - Saturday 9am - 10pm.



GOLD EXCHANGE CAFE - MALDON

46 Main Street - 0439 368 077
Open 7 days
Limited dine-in and takeaway.
Monday-Friday from 6.45am-3pm and
Saturday and Sunday from 7.30am-3pm.

MALDON HOTEL - MALDON

58 Main Street - 5475 2231
OPENING HOURS
Monday & Tuesday: 4pm
Wednesday - Sunday: Midday
Lunch Specials: Wednesday - Friday
Meat Tray Raffle: Friday nights

NEW BOOTS CAFE - NEWSTEAD

16 Lyons Street - 0492 867 319
Great menu - excellent Allpress coffee
Golden North award winning ice-cream
Open Thursday - Sunday 8.30am - 4pm
Bookings advisable



CAFÉ MALDON - MALDON

52 Main Street - 5475 2022
Open 7 days.
Open for takeaways only
Monday-Friday from 7.15am-2pm and
Saturday and Sunday from 8am-3pm.
<https://order.hungryhungry.com/cafemaldon/menu>

KANGAROO HOTEL - MALDON

89 High Street - 5475 2214
Bookings Advisable
Open Tues & Thurs 4pm - Close. Dinner only
Closed Mon. *Tight ass Tues evening - \$15 meals.
Wed, Fri, Sat & Sun 12pm - Close. Lunch & Dinner.
Takeaway - Fish & Chips or Parma Tues - Sun.

Le Sel DELI - MALDON

12 Main Street - 0417 329 776
Open for dine-in from Mon -Thurs from 9am-3pm
and Fri, Sat and Sun from 9am-5pm.
Sat night dinner bistro from 6.30pm to 10.30pm.
Takeaway breakfast, lunch & dinner also available.
Bookings are essential for the bistro.

RAILWAY HOTEL - CASTLEMAINE

65 Gingell Street - 5472 1250
Great food, both traditional pub food and gourmet.
Daily specials.
Open 7 days a week for dinner and lunch on weekends. Phone : 5472 1250 for bookings.

Health & Fitness Directory



WINTER IS HERE - A GREAT TIME TO GET YOUR BIKE SERVICED

51 Templeton Street,
Castlemaine
Ph: 5470 6333

(Mention this ad and we will donate \$10 from the service fee to the
MALDON, MURRAY TO MOYNE cycling team, in support of the MALDON
HOSPITAL)



MALDON GOLF CLUB

GOLF LESSONS – on demand - all standards - clubs available
SOCIAL GOLF – 9am Monday and Friday. Ring to check times -
9 holes, free for members or \$10 green fees
RECREATIONAL - exercise and dog walking memberships available.
Enq: maldongolf4u@gmail.com or Gay Reid 0413 013 766.



MALDON CROQUET CLUB

(Established 1925)
Francis Street Maldon
Social Croquet every Tuesday, Thursday and Saturday from 9.30am
and Tuesday evening from 7pm.
New players always welcome to come and give it a try. Equipment supplied.
Also open to young players, Working With Children certificated members to help with
learning and coaching available. Weekly green fees \$5.
Enquiries: Ray Austin 0448 338 251.



KEYSTONE PILATES

Keystone Pilates provides a safe friendly environment where people of all
ages and abilities can work on their strength, flexibility and balance.

CALL FOR A FREE ONLINE TRIAL

The Faulder Watson Hall, Barker Street, Castlemaine
Contact Lloyd 0421 329 895



MALDON FOOTBALL NETBALL CLUB Committee 2019/2020

Executives:
President Jamie Cox 0429 477 223
Vice President Nick Kinross 0439 114 099
Secretary Luke Cox 0438 058 665
Treasurer Kyle Winstanley 0402 618 123
General committee members: Coby Cox, Simon Cox, Eddie Peaslee, Luke Dyer,
Kirsten Cain, Georgia Spokes, Ross Egleton, Steve Webb



TREAD PODIATRY

Providing superior foot care to those in need.

· Foot & ankle pain · Orthotics · Children's feet · Wound care
· Nail surgery · Sporting injuries · Diabetic foot health
· Gait analysis · General footcare

255 Barker Street, Castlemaine. Ph: 5472 3295

Did you know?

DEADLINES

Deadlines for classifieds
Before 12 noon Tuesday
Births and deaths before 10.30am
Wednesday

LOST AND FOUND ADVERTISEMENTS

All Lost and Found advertisements are
published in the *Tarrangower Times* **FREE**.

FOR SALE - UNDER \$200

Any items For Sale under \$200 are published
in the *Tarrangower Times* **FREE**.
You can even include a photo.

Ph: 5475 2256 ~ 0404 357 556 ~ karen@tarrangowertimes.com.au



97 High Street, Maldon. Enqs Joy 5475 1326.
Every Mon, Wed & Friday 2-4pm. Saturday 9.30am - 12 noon.

Inspiring Books

Following NAIDOC Week I thought that the Athenaeum Library should have some more recent books that focussed on our First Nations People. There are two this week and in the coming weeks I'll review more of these new books.

Truganini (published in 2020) is written by Cassandra Pybus and is described as 'a compelling story, beautifully told'. The name Truganini is probably known to most of us as the last surviving full blooded Tasmanian aborigine, but her story and importance to Tasmania and Australia is much more than that. It is likely that she was born on Bruny Island in 1812 and died in Hobart in 1876. It is also believed that she was outlived by another aboriginal woman named Fanny Cochrane Smith but there are doubts as to whether Fanny was really a full blooded aborigine. Amazingly Truganini survived the devastation of the 1820s when the aborigines of south-eastern Tasmania were all but

In Maldon Today



An exhaustive search has failed to identify the collective noun for editors; nevertheless three who have held that position at the *Tarrangower Times* in living memory will gather in the studio today. Old hands Nancy and Mike meet the current incumbent Jade Jungwirth.

Last week our guest was Ed Carthew (pictured) of Carthew Real Estate, who told many stories of dealings in property: a fascinating insight into the workings of the industry. One clear message was that no real estate is going down in price anytime soon. The program also included gossip from around the town, how to apply for the Victorian Government power saving bonus, and of course celebrating NAIDOC Week.

Next week's program will welcome Councillor Stephen Gardner and Nick Kinross from the MFNC (Maldon Football Netball Club) to the studio. Stevo and Loz in control of proceedings.

To catch up on our previous programs click on <https://www.mixcloud.com/nancymay007/>.

See our ad on page 13.

Mike Smythe

extinguished and she spent the next seven decades living through a psychological and cultural shift that is hard to imagine. This is a fascinating book for all Australians to read and think about.

Daughter of the River Country (published in 2021) is the story of an aboriginal girl, Dianne O'Brien, who was born in country NSW and taken from her mother at birth. Dianne tells her story with help from Sue Williams. This truly amazing child and woman has lived through such tragedy and horror that would completely unhinge most of us but she has somehow survived and is today a leader for her people who have had similar experiences. She was adopted by an Irish mother who sadly died before she revealed Dianne's heritage to her and from then on, having been abandoned by her adoptive father she suffered unbelievable indignities. At the age of 36 she discovers that she is a Yorta Yorta woman and she is re-united with her birth mother. She has forgiven those in her past and has become an important leader.

Devorgilla Days is a biography by Kathleen Hart. Devorgilla is the name the author gave to a very dilapidated cottage that she bought in Wigtown in a remote part of Scotland. She decided to move to Scotland after many years of battling illness which left her body badly damaged and covered in scars. She hoped to heal body and soul and at Devorgilla her life changed forever. Before her illness Kathleen had been happily married and mother of two adult children, the owner of a wardrobe of designer clothes and expensive handbags ('show and tell' items at coffee mornings). In Wigtown she found a community which readily accepted her and provided warmth and friendship as she immersed herself in a simple way of life and village

Petanque Club Tree Planting



☆ The Maldon Petanque Club's Beverley Forsyth and Barry Droney (with Andrew Leckie in the background), digging holes at last Sunday's tree planting.

IT was a hive of activity last Sunday afternoon when MULGA's Bev Phillips helped Maldon Petanque Club members to plant out the area surrounding the pistes in the St. Brigid's church grounds.

The trees and shrubs, from Frances Cincotta's Newstead-based plant nursery, are either indigenous to the area or are well-suited to Maldon's climatic conditions. The Petanque Club gives thanks to MULGA for organising the purchase of the plants as well as providing expertise, stakes and tree guards.

activities.

Bereft is a novel by Chris Womersley which was short listed for the Miles Franklin award in 2011 and in that year won the Abia and Indie awards. It's a story set in 1919 after World War I when the Spanish Flu epidemic is raging across Australia. There are parallels with today's COVID virus pandemic as state borders are closed and guarded by armed men, travel is severely restricted and there are rumours that it's the end of the world. The personal story of Quinn Walker is interwoven with the epidemic and his struggle to find peace back in his home town which he had left 10 years earlier when accused of an unspeakable crime.

I hope that you will enjoy these fascinating and challenging books.

Joy Leneaux-Gale

MALDON BRIDGE CLUB RESULTS

DOUBLE TROUBLE.....



IT was 'double trouble' this week at the Bridge tables. A great turn-out of 21 players arrived, eager to get the better of the cards!

Fred and Mary were back, refreshed from the holiday break and it was 'player beware' as Fred and partner

Louise took their place at the tables.

Gretchen and Ken returned to defend their great win from last week but did not draw each other so it was up to them individually to try to achieve the top score again. Paul gave the statistics of their winning margin from last week as an equal second best, 74% winning margin score recorded during our 12 years of the Club's existence.

Play resumed with heads down and total concentration, for a while at least!

There were quite a few moans and groans as the cards were dealt with West players receiving very ordinary cards to try and make sense of. A couple of slams were there to be had but everyone was a bit hesitant in making the bid for a top score.

Another way to get a top score is to *double* your opposition's bid! We were certainly not let down this week with Fred, at his *doubling* best, with a record four successful *doubles* and top scores to boot! That is *double trouble* for the opposition.

The scores were tallied and the winners and placings announced by Paul.

In first place, came the call, by one point were Gretchen and Werner with 127 points. It was 'neck and neck' to the last board counted to get a final decision.

A very gallant second place was earned by Kevin and Roger with 126 points.

Third place went to Paul and Newstead Jo with 113 points. Danny and Judy managed fourth place with 103 points, followed in fifth place by Mark and Mary with 100 points. Congratulations to everyone on another successful and happy afternoon.

At our afternoon tea break we rendered a Happy Birthday song to Castlemaine Jan and Newstead Jo. We then settled in to enjoy the warm scones, jam and cream along with a good 'cuppa'. Thank you Maldon Hotel team once again.

Whatever your age group or skills, please feel free to join us to, 'dip your toe in the water' each Thursday from 12.45pm to 4.30pm or on Mondays 1.15pm to 4.30pm to help us in our endeavour to:

USE IT OR LOSE IT

Judy McKnight

WHO WILL YOU NOMINATE?

The Awards recognise, encourage and reward the positive achievements of regional and rural Victorians.

Category winners will receive \$2,000 into an account in their name from Westpac or a PRIME7 Television Package.



For more information call 03 9720 1638 or email vic@awardsaustralia.com

Nominations close 23 July 2021.

The **Community Achievement Awards** are looking for outstanding regional Victorians in the following categories:



Business Achievement Award



Community Group Award



Customer Service Award



Leadership and Innovation Award



Community Education Award



Community Hero Award

NOMINATE NOW: www.awardsaustralia.com/viccaa

AWARD PARTNERS:



A FATAL EXPLOSION

Just after one o'clock on the morning of Thursday 7 January 1886 a terrible explosion occurred at the Great Western Cymru mine, which was located where the Machinery Museum now stands, south of the Beehive mine. The *Tarrangower Times* reported that the explosion woke local residents who thought it might have been an earthquake or a dynamite blast. Unfortunately it was neither of these but was instead the explosion of a boiler at the mine.

Several people living nearby rushed to the site and found the engine house and surrounding buildings enveloped in a cloud of steam with debris scattered in all directions. They also found Joseph Obermeyer, the engine driver on duty, sitting near the poppet head about five metres from the engine house in a pitiful state.

John Stevenson who was the first person on the scene ran to Dr Arthur Farr's surgery in Main Street. Meanwhile several others, including blacksmith William Vincent and Susan Rickard the hostess at the Phoenix Hotel, arrived at the mine and comforted Obermeyer.

When Dr Farr arrived he found that Obermeyer was badly scalded and his left arm was broken below the elbow. Farr did what he could to make him comfortable before Obermeyer was placed on a board and carried to the Hospital. On arrival his clothes were removed and Farr found that he had been scalded all over. Obermeyer died about six hours later.

At the inquest into Obermeyer's death and the cause of the explosion, evidence was given that the boiler had been examined and tested about six months previously and been found in good working order. Henry Nicolson, a mining inspector, said that he thought that the safety valve had been left open and the water level had fallen to a dangerous level resulting in the flue through which steam passed collapsing. The inquest found that Obermeyer's death was the result of an unfortunate accident and that there was no direct evidence to show how the explosion occurred.

Obermeyer's wife Julia survived him. They had come to Maldon in about 1860 when Obermeyer opened a blacksmith shop near the Eaglehawk Hotel. When news of his death was known many business people in town paid tribute to him by closing their shops.

Fortunately Obermeyer had insured his life for £300 with the London and Lancashire Insurance Company. He was also insured by the Accident Indemnity Society. As he was also a member of the local branches of the Oddfellows and Foresters friendly societies, his widow Julia was entitled to various benefits.

Julia Obermeyer remained in Maldon until her death in 1898. She is buried in the Maldon Cemetery with her husband.

This information was supplied by the Maldon Museum and Archives.

Bursting at the seams



☆ Ron has been travelling from Port Adelaide for years to attend the Antique Fair. He enjoyed catching up with 'people that feel like relo's' at the Swap Meet.



☆ Local Nathan Anton selling his unique lamps at the Swap Meet last Sunday.

Discounted desexing vouchers



MOUNT Alexander Shire Council is offering low income earners in the shire a reduced rate on cat and dog desexing to help encourage responsible pet ownership.

Council is working in partnership with local vet clinics on the initiative, with heavily discounted vouchers available to dog and cat owners who are healthcare card or pensioner card holders, and living in Mount Alexander Shire.

Under the voucher scheme, cat owners pay only \$50 to have their female cat desexed or just \$30 for a male. At the same time, cats will be microchipped to enable them to be traced to their owners if they stray or are lost.

Owners are encouraged to register their cats with Council once desexing and microchipping is complete.

Under the voucher scheme, eligible dog owners can save up to \$85 for desexing their male or female pet.

Vouchers are available throughout the year from the Civic Centre, and redeemed at participating veterinary clinics including Castlemaine Vet Clinic, Healthy Pets and Maldon Pets.

"July is National Desexing Month, a time when pet owners across the country are invited to desex their pets, so there's never been a better time to book your pet in for the procedure," said Brooke Pannett, Acting Coordinator, Community Safety and Amenity, at Mount Alexander Shire Council.

"Evidence indicates that cats and dogs that have been desexed are less likely to spray in and around the house, or be injured while out looking for a mate.

"In addition, desexed animals are often more relaxed and affectionate, and less likely to be aggressive," said Brooke.

For further information, contact Council's Local Laws team on 5471 1700.

MUCH ADO
GENERAL STORE. MALDON

22 Main Street

We've got your Dry July sorted with our
alcohol-free wines, sparkling + gin!
Mon - Wed 10am-3pm
Thurs - Sun 10am-4pm



Shop Online: www.muchado.com.au
Follow Us: @muchadomaldon
Email: info@muchado.com.au
Call 03 5475 1005

THE LAST HURRAH

Original Funerals for Unique People

Have a funeral that actually reflects the life of the person you have loved and lost. We bring YES energy to funeral planning, and offer kind-hearted, professional, and authentic care at a reasonable price.



www.lasthurrahfunerals.com.au
0430 378 388

MALDON



GROCERIES OPEN

Mon-Sat: 7.30am - 7pm
Sun: 9am-5.30pm

LIQUOR OPEN

Mon-Thurs: 9am - 7pm
Fri-Sat: 9am - 7.30pm
Sun: 9am-5.30pm

SPECIALS

from Wednesday 14th July to Tuesday 20th July

Sorbent 24 roll pack
\$9.00ea

XXXX Gold 30 Can Block
\$44.00

Bananas 750g pack
\$2.00ea

Great Northern Super
Crisp 24 pack \$45.00

11-17 Main Street Maldon.
Ph: 5475 2458

PUBLIC NOTICES



"I NEVER THOUGHT I'D BE HOMELESS."

Donate today

Visit salvationarmy.org.au or scan the QR code




THE SALVATION ARMY
RED SHIELD APPEAL
LEAVE NO ONE IN NEED

PUBLIC NOTICES

IMT - In Maldon Today Radio Program

Tune in to 94.9 MAINfm

Every Friday morning between 9am and 11am.

Tune into www.mainfm.net or the TuneIn Radio App.

Studio guests and latest news and gossip in 'Street Talk'

Suggestions and feedback: inmaldontoday@gmail.com

or Facebook (IMT - In Maldon Today Radio Program)

SMS comments during the show (0488 863 186)

and sign it so we can read it out on air

Listen later on <https://www.mixcloud.com/nancymay007/>

Tarrangower Times NEW OFFICE HOURS

Monday:

9am - 11am

Tuesday:

9am - 12pm

Wednesday:

9am - 1pm

Ph: 5475 2256

To appear in the
Tarrangower Times
**Business & Services
Directory**
for only \$14.40 per
week, give Karen a
call on:
0404 357 556
or
[karen@tarrangower-
times.com.au](mailto:karen@tarrangower-times.com.au)

PUBLIC NOTICES

ROB LEESON

Photographer



Pets, People, Portraits

0400 100 075

www.robleson.com.au

Seen anything interesting?
Call the *Times* on: 5475 2256

Shining a spotlight on women's mental health

Continued from page 5

veterinarians and their families, has helped raise \$500,000 in the past five years by donating \$5 from each sale of the company's livestock, pig and poultry vaccines and drenches. The money raised goes directly to the Beyond Blue Support Service to continue helping people living in remote areas who experience higher rates of mental health conditions and suicide. To date these donations have helped over 8,000 people who have been able to get the support they need through the service.

In addition to everyday demands, major life transitions such as pregnancy, motherhood and menopause, can create physical and emotional stresses for women. Negative life experiences such as infertility and perinatal loss, poverty, discrimination, violence,

unemployment and isolation also impact on women's mental health and well-being. In addition, unequal economic and social conditions can contribute to women's higher risk of depression.

Beyond Blue CEO Georgie Harman said the Beyond Blue Support Service continued to experience increased demand since the beginning of the COVID-19 pandemic.

"This year has brought its challenges and people have got in touch with us for many reasons. They might be feeling worried, lonely, concerned about their health or the health of friends and loved ones, finances or job security," Ms Harman said.

"Whatever the reason, Beyond Blue wants people to reach out, regardless of how big or small the problem. Sometimes, just

talking to someone can make a difference.

To talk to a mental health professional for free, contact the 24/7 Beyond Blue Support Service on 1300 22 46 36. Free web chat is also available from 3pm until midnight at beyondblue.org.au/getsupport and you can join the forums for free and download the BeyondNow app from the website.

The free Coronavirus Mental Wellbeing Support Service is available 24/7 at coronavirus.beyondblue.org.au. Its dedicated phone line, staffed by mental health professionals trained on the pandemic response, is available on 1800 512 348.

For more information about how you can help Zoetis to raise vital funds to support mental health in our rural communities through its partnership with Beyond Blue please visit www.zoetis.com.au.

Proudly
sponsored
by

Maldon Newsagency & Tattsлото



TATTS INSTANT SCRATCH-ITS

Scratchie sales have returned to Tatts.

Try your luck with Tatts Instant Scratch-Its (\$1-\$10) at Maldon Newsagency. We are not just a paper/magazine Lotto shop.

Come and check out our range of ever changing products.

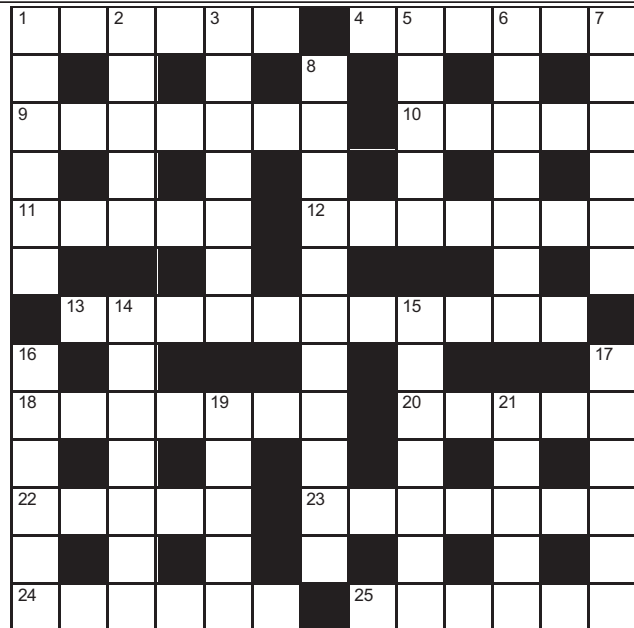
Open for your convenience from 5.30am daily.

Use us at your convenience.

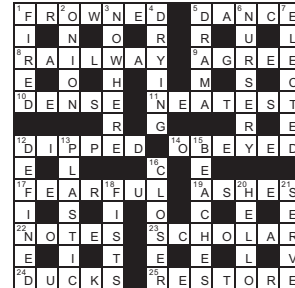
CROSSWORD Number 809

Across

- 1 Antidote
- 4 Provides evidence
- 9 Distribute
- 10 Bogus
- 11 Artist's stand
- 12 Spouse
- 13 Suggestion
- 18 Blaze
- 20 Concern
- 22 Type of hat
- 23 Entail
- 24 Fancy
- 25 Feature



Solution to No. 808



Down

- 1 Cash in
- 2 Thaws
- 3 Progress
- 5 Flat boats
- 6 Mountain that erupts
- 7 Pays out

- 8 Before recorded history
- 14 Umpire
- 15 Burglars
- 16 Lied
- 17 Choose
- 19 Fees
- 21 Answer

Rainfall Baringhup

Week Ending 13.7.21

8.2mm

Monthly Totals So Far:

Month	2021	2020	2019
Jan	92.9	44.6	3.2
Feb	8.9	56.3	12.6
Mar	72.3	32.8	4.3
Apr	9.8	99.6	4.5
May	42.0	49.2	100.8
June	54.0	38.3	75.2
July	15.1	23.5	35.3
Aug		48.7	45.7
Sept		40.9	19.1
Oct		47.1	4.9
Nov		25.7	38.6
Dec		29.1	3.9
TOTAL	295.0	535.8	348.1

Rainfall Maldon

Week Ending 13.7.21

16.2mm

Monthly Totals So Far:

Month	2021	2020	2019
Jan	83.4	35.2	4.8
Feb	17.0	52.8	21.6
Mar	83.8	37.0	7.6
Apr	14.4	145.4	5.6
May	53.6	66.2	115.5
June	81.0	49.2	92.2
July	31.2	32.8	53.6
Aug		62.2	57.6
Sept		54.6	29.4
Oct		73.2	8.6
Nov		37.2	43.0
Dec		39.2	9.8
TOTAL	364.4	685.0	449.4

Rainfall Newstead

Week Ending 13.7.21

8.4mm

Monthly Totals So Far:

Month	2021	2020	2019
Jan	101.6	53.6	5.0
Feb	13.6	38.0	18.2
Mar	67.2	35.8	6.2
Apr	11.4	107.6	5.0
May	53.2	56.2	113.6
June	62.6	46.6	82.8
July	20.8	29.4	43.0
Aug		69.6	51.6
Sept		46.8	31.2
Oct		56.2	9.8
Nov		22.8	42.0
Dec		31.2	8.4
TOTAL	329.8	593.8	416.8

Water Storage Capacity as at 13.7.21

Site	Cairn Curran	Max ML	147,130	Current ML	59,938	% Full	40.74
Site	Malmsbury	Max ML	12,034	Current ML	4,289	% Full	35.6



The Book Wolf

Who said: "It is my lady! O, it is my love! O, that she knew she were!"

0487 193 223

1/26 High Street

ARBORIST


Arborea
Tree Management
Consulting Arborist
Contract Climber • Tree Pruning & Removals • Cable Bracing & Risk Assessment • Mulching & Stump Grinding • Tree Maintenance & Protection • All Tree Works
Fully insured
Reubin Williams
0439 326 113

BUILDING DESIGNER

BUILDING DESIGNER
Maldon Based

*Home Design
Planning Applications
BAL Assessment
Project Management*
0402532082
eric@s3design.eco

CABINET MAKER

CABINET MAKING & INTERIORS
Custom-made fitted and free-standing furniture
Kitchens, kitchen renovations, wardrobes, vanities, bookcases etc.
Repairs and restorations
No job too small
Martin Waddington
Ph: 0423 405 863
Email: mwaddington70@gmail.com

CABINET MAKER

JOINERY & HANDYMAN
All Woodwork Jobs
Interior & Exterior.
Maldon and surrounds.
No job too small.
Free quotes.
Nick Pierce
Ph. 0491 115 459

CARPENTER


Local Registered Builder.
Renovations and New Builds.

CONCRETER

CONCRETER
PAT COLLINS
PATHS, SHEDS, FLOORS, DRIVEWAYS, PATTERN, COLOUR
PAVING ALSO BRICK PAVING
Shelbourne Road
Maldon
Ph. (03) 5475 1080

DRESSMAKER

DRESSMAKER / TAILORESS
Alterations & repairs.
Experienced and reliable.
Maldon based.
Very reasonable rates.
Phone: 5475 2952
or 0448 510 103

ELECTRICAL

Cainpower
Bernie Cain
Your Trusted Local
Electrical Contractor
Rec 8335
Maldon & Surrounds
0417 526 308

ELECTRICAL


SQS ELECTRICAL
Qualified Licensed Professionals
Servicing Goldfields Area
All jobs big or small
Call Simon on
0408 314 662
sgs.sparky@gmail.com
Rec 19673

ELECTRICAL

Ian Cain Electrical
Rec No 13585

Domestic, industrial, commercial, farming,
emergency call out on request
Carisbrook
Phone/Fax 5464 1402
Mobile 0418 388 226
ices@westnet.com.au

FLOORING

TRUE BLUE FLOORS
• Sanding & Polishing Specialists
• New & Old Floors
• Free Quotes
For Quality Workmanship
Ph: RIC LANG
0417 110 922
MALDON

FRAMEMAKER

MOLLYPENNY
UNIQUE, TRADITIONAL & GALLERY STYLE
FRAMEMAKER
• FOR ARTWORKS ON ALL MEDIA, ANY SIZE
• BOXWORK FOR MEDALS & EPHEMERA
• CANVAS STRETCHING
• MIRRORS • REPAIRWORK
BY APPOINTMENT:
0412 194 760
mollypenny1@gmail.com

HAIR DRESSER

Debbie's Salon
Mens & Ladies
HAIRDRESSER

for all your Hair Care
Closed Tuesdays
Sat. mornings by appt.
27 Harker St., Maldon
Ph: 5475 2400

JP

Justice of the Peace (JP)
Local JP Margaret McKnight can be available for witnessing documents at the Community Centre by appointment.
Contact: 5475 2440 or 0439 752 465

PAINTING


Interior & Exterior
Residential & Commercial
New/Old houses
Staining
Roofs
Over 15 years experience
Free Quotes
Ph: Daniel
0400 090 480

PAINTING

INTERIOR REPAINT SPECIALIST
Alan Chapman
"Not just a Painter"
wallpaper stripping
plaster repairs and more...
No job too small
0423 475 431
Maldon

PAINTING

Jim's Painting

0458 374 579

PAINTING

Malcolm Stone Painting Services
Maldon & Surrounds
Over 40 years Experience

All types of painting Interior - Exterior - Inc. Heritage
Please call Mal on
0400 417 417
Maldon

PET CARE


Maldon Vet Clinic
Opening hours:
Tues - Fri 9am - 5pm
Ph 54 751 751
Fear-free consultations and home visits available

48 Hornsby Street
Maldon
Emergencies
0492 805 480

PET CARE


Mutz Kutz
All your pet grooming needs
Pet & stock feed + accessories
Bookings Essential
5475 1212
57-59 Main Street
Maldon

PLASTERING

Maldon Plastering Services
Heritage restoration, new homes, extensions and renovations.
No job too small.
Phone Richard Port
0412 397 404

PLUMBER

Steve Kile
Licensed Plumber & Gasfitter
VBA Lic No 28819
Ph. 0409 638 966
All your plumbing, gasfitting, roofing & drainage needs at competitive prices.
Free quotes/estimates,
32 yrs experience
stephenkile@outlook.com

STOCK FEED

Stock Feed and Pet Food
Brands incl: Black Hawk, CopRice, Cobber and Barastoc Poultry Feed & Wild Bird Seed.

FREE LOCAL DELIVERY
Open 7 days a week
14 High St, Maldon.
Ph: 5475 1018
S P MACHINERY



The Tarrangower Times is bound by the Standards of Practice of the Australian Press Council. If you believe the Standards may have been breached, you may approach the newspaper itself or contact the Council by email (info@-presscouncil.org.au) or by phone ([02] 92611930). For further information see <http://www.presscouncil.org.au>.



4.1 million Australians read *community newspapers* in print.

emma™ 12 months to February 2017. Readership based on last four weeks. Survey conducted by Ipsos MediaCT, people 14+ ; Nielsen DRM February 2017, People 14+ only.

MALDON FOOTBALL NETBALL CLUB REPORT

Round 11

Huge Day for the Maldon FNC - 11 wins out of 12 matches



Continued from page 16

quarter and came away with a huge 77 point win, putting themselves one game clear in 4th position. Billy Miller and Bailey O'Dell continued their brilliant seasons, both dominating for four quarters. Robbie Muscat ran rings around Lexton's defence kicking 6 majors.

Goal Kickers: R. Muscat 6, M. Smolak 3, X. Noy, N. Upton, B. O'Dell, J. Rewell, B. Miller, T. Webb

Best Players: B. Miller, B. O'Dell, D. Ross, T. Brereton, J. Rewell, N. Webb

UNDER 14.5s FOOTBALL

Maldon 10.12-72 def Lexton 2.5-17

It was always going to be an exciting game and big test for our under 14.5 boys with both Maldon and Lexton heading into the game undefeated. Lexton got the jump on Maldon kicking a couple of goals and headed into the quarter-time break with 4 points up on Maldon. After the first break Maldon played a lot more attacking football and proved why they are premierships favourites, keeping Lexton goal-less for the last 3 quarters and coming away with a 55-point win. Daniel Zammit had a best on ground performance dominating in the backline.

Goal Kickers: S. O'Grady 3, R. Muscat 2, L. Anton 2, I. Mason, C. Buchanan, L. Mason

Best Players: D. Zammit, C. Buchanan, I. Mason, N. Turner, B. Roberts, R. Burchell

UNDER 11.5s FOOTBALL

Maldon 9.8-62 def Lexton 1.1-7

Under 11s continued to gel as a team with a convincing win over Lexton. We lent players to the opposition so we tested our skills against each other. Vance had a break out game with solid defence and attack on the ball and Jazmin continues to impress.

Lysander kicked 4 in the first and Essie and Xavier T kicked a major, whilst Jack S helped and couldn't stop his instinct and kicked one for the other side.

Overall great display of efforts to help the team, with the coach rejoicing that training drills are making an impact, while Aihen, Jack, Tommy and Wallsy were leading by example.

Five games to go and we're going against undefeated Avoca in our next game.

Goal Kickers: L. Tansley 4, T. Hamilton, Z. Turner, F. Walls, A. Turner, J. Smith

Best Players: V. Jones, E. Egleton, L. Tansley, J. Smith, F. Walls, J. Hokai

A GRADE NETBALL

Maldon 44 def by Lexton 69

Best on: Rachelle McLean

Maldon got off to a slow start in the first half of the first quarter, finding it difficult to get the ball into the goal ring. The second part of the first quarter Maldon turned on the heat and started to get back in the game. Another slower start to the second quarter saw the score creep out a little further.

The second half of the game with some position changes saw a big shift in Maldon's work rate. The girls made Lexton work very hard for their win with what felt like a finals atmosphere.

An excellent team effort by all the girls out there today.

B GRADE NETBALL

Maldon 36 def Lexton 35

Coming off the bye, Maldon B grade were ready to get back into the swing of things, as Maldon shaped up against Lexton determined to get another win on the board. The B grade girls came out firing, leading the whole way through the game but Lexton didn't go down without a fight, with Maldon only winning by 1 point. The girls will be resting and shaping up for a big game against lead runners Avoca for this Saturday.

C GRADE NETBALL

Maldon 23 def Lexton 22



This week had us at home against Lexton. This was going to be a tough game, with Lexton 3rd and Maldon 4th on the ladder. After a loss last week to Harcourt, the girls were ready for another tough encounter. Maldon came out strongly and gave it everything in the first quarter to be down by 1 goal.

It was still tight in the second quarter with scores tied. The girls knew they had to play their hardest and were still in with a chance with a few changes in the 3rd quarter. We were down by 3 goals going into the last quarter. The girls knew it was all or nothing and needed to really push out. It was an amazing last quarter to watch. The whole team right through the court had done an exceptional job and it felt like watching a final. To their credit, with team support and determination, they came away with a one goal win. Congratulations girls - keep up the awesome effort!

Best On: Georgia Roberts

UNDER 17s NETBALL

Maldon 35 def Lexton 10

The 17 and under team had a great game with some 15 and under players filling in for the team - they played well with good team plays down the court. The Lexton team was a very worthy opponent and certainly challenged the Maldon team making converting the goals hard with their constant pressure in defence. Maldon responded well to the pressure of Lexton each quarter and were able maintain a very tight and secure defence. It was a brilliant win for the girls; they are certainly starting to hit their best as we close in on finals.

Best player: Claire Hamilton with her unbelievable defence and peripheral vision in the goal circle.

UNDER 15s NETBALL

Maldon 58 def Lexton 3

What a start to a brilliant game by the 15 and under team. They came out of the blocks fast and never slowed down, showing Lexton no mercy in the win. It was great to be on the winners list after a couple of tough games in the last two weeks. The Lexton team had no reply for the well-tuned Maldon side and struggled to put a score on the board. Lexton only recorded 1 goal per quarter with the last quarter being held scoreless. The Maldon team were able to maintain their excellent defence and convert their goals, which allowed them a brilliant win at the end of the day. It was an explosive win for a lead up to finals.

Best Player: Mackenzie Shepherd with only her second game back this year from injury, her shooting skills were exceptional.

UNDER 13s NETBALL

Maldon 20 def Lexton 11

The under 13s stood up and took on Lexton who are 8th on the ladder. It took us until the 4th quarter to really take off where we put the foot to the metal and really utilised the ring. Our defence was tight and tall. It was a credit to them all. We saw play from players that we have never seen before and it was exciting. When this happens, everything falls into place. Encouragement awards Kloe and Eva.

UNDER 11s NETBALL

Maldon 15 def Lexton 1



Pumped, awesomeness, proud, thrilled and emotional are just some of the words I will use to share how I (Bec Buchanan, Coach) am feeling about today's day at the office. So proud of how the under 11s made their leads, came out in front, used big strong passes that opened up the game allowing our attackers to be able to shoot perfectly. We kept Lexton goalless for 3 quarters. What a top effort by our defence! Congratulations under 11s on your first win for the year.

Encouragement awards: Holly and Elsa.

Jamie Cox

President | MFNC

MALDON GOLF CLUB



LAST Saturday's event, Stableford Multiplier, is a two-player team game where the player's scores on each hole are multiplied to determine the team score. If one player fails to score a point on a particular hole, the resulting team score is zero.

This game relies heavily on each player scoring on each hole and contributing. The stand-out winners on the day were Bill and Steve Moore - 81 points, averaging 4.5 points per hole. It was a great result indicating very solid contributions from each player.

RESULTS

...18-HOLE STABLEFORD MULTIPLIER...

WINNERS	Steve Moore/Bill Moore	81 points
RUNNERS-UP	Nick VanWamel/ John Purcell	68 points
BALL-WINNERS	Ian Harry/Jeremy Tripcony	65 points
	Colin Francis/ Colin Windebank	62 points
	Noel Oliver/ Peter Gerolemou	59 points
Ca\$h-HOLE	John Purcell	HOLE 2

GOLF THIS WEEKEND ANNUAL TOURNAMENT

FRIDAY: 4BBB STABLEFORD - HIT-OFF 10.30am

SATURDAY: 3person AMBROSE - HIT-OFF 12 noon

SUNDAY: 18-HOLE STROKE - HIT-OFF 11am

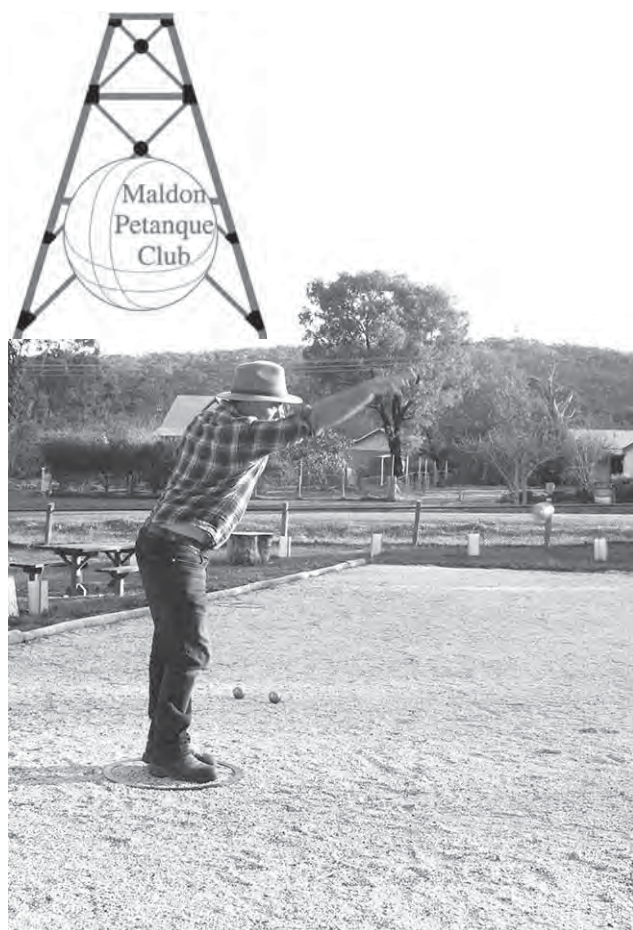
Incorporating WALTER TRAVIS trophy for
HICKORY PLAYERS

Golfers in 'Plus Fours' attire playing with traditional wooden golf-clubs.

Bob Briggs



MALDON PÉTANQUE CLUB



☆ With the new shrub plantings behind him and Mt. Tarrenower in the background, Gerry Marthe from the Smythesdale Club joined in the club's Sunday's games.

*There was no breeze
Why not plant some trees*

Before last Sunday's games we had a working bee to plant 14 native shrubs around our pistes. As we are petanquers, not gardeners, we enlisted Bev Phillips from MULGA (Maldon Urban Land Group) to supervise. By game time they were all planted, watered and shields erected. Now all we need is Mother Nature to do her bit.

We welcomed Peter Wells from Woodend Hanging Rock Club as he has joined our Club as an associate member. The weather was kind to us; the weak sunshine had no heat but it did look bright, which meant good petanque playing conditions. After our regulation games, the computer advised us that three players had all won their three games, they were Andrew Leckie with 22 Points, Chris Przygody 21 points and Matt Loake 14 points.

Our next fortnightly games at St Brigid's on 25 July will start at 1.30pm and after the games, our Annual General Meeting will take place in the hall.

Saturday 31 July, 2021 will see round 1 of a round robin tournament with Mt Macedon Petanque Club, two teams of five from each club will do combat. These games will be played at our home pistes at St Brigid's with round 2 to be on Saturday 28 August at Gisborne.

The Mt Macedon Club is also going to join us for games on Sunday 8 August. Everyone wants to come to Maldon.
Geoff McLennan

Maldon & District
Community Bank® Branch
Bendigo Bank

MALDON FOOTBALL NETBALL CLUB REPORT

Round 11

Huge Day for the Maldon FNC - 11 wins out of 12 matches



Photos courtesy Alysha McKnight.

SENIOR FOOTBALL

Maldon 15.15-105 def Lexton 4.4-28

Playing back at Maldon in front of a home crowd was going to be a big advantage to Maldon going up against a top four side. We needed to have a win to place ourselves in the top four and also to win our first game against a side above us on the ladder. The boys jumped out of the blocks in the first quarter and put a handy 19-point lead on the board and never looked back, increasing the lead at every change. From the backline to the forward line, we had no passengers for the day and it was our best performance yet! Better players were Nick Kelly at centre-half-back who also took a massive hanger and mark of the year, Tommy Horne, Rhys Ford with 9 goals, Tom Cain, Hayden Kelly and Josh Pascoe who did the ruck work all afternoon in a great display! After a terrific win by 75 points, we now look forward to cementing our place in the top four with only five rounds to go for the season.

We look forward to tackling Avoca away this week!

MALDON DONS ON THE RUN IN TWENTY 21!

Goal Kickers: R. Ford 9, H. Kelly 3, T. Horne 2, D. Wilson, J. Fowler, H. Muscat, M. Gray, A. Wilson
Best Players: N. Kelly, T. Horne, R. Ford, T. Cain, H. Kelly, J. Pascoe

RESERVES FOOTBALL

Maldon 15.15-105 def Lexton 4.4-28

The reserves took on second placed Lexton with a battle for a higher position at stake. After a disappointing loss the

previous game, the start was all important. The boys were able to jump their opponents right from the start and took a 24-point lead at the first change. From there, the reserves were able to take full charge and piled on 15 goals to 4 after quarter time to run away winners by 96 points. Steve Freemantle was instrumental in gaining first use out of the middle and received solid support from Loche Brennan.

Andy Davidson repelled many forward thrusts by Lexton and was able to utilise Harley Brereton and Ricky Bastin's run off half-back. Dave Carroll was a key target up forward bagging 7 with Bailey Muscat dangerous on the ground kicking 3. The win consolidates our position in the top 3.

Goal Kickers: D. Carroll 7, B. Cole 4, B. Muscat 3, J. Cox 2, S. Freemantle 2, M. Carroll, L. Dyer

Best Players: A. Davidson, R. Bastin, B. Muscat, H. Brereton, M. Carroll, S. Freemantle

UNDER 17.5s FOOTBALL

Maldon 15.15-105 def Lexton 4.4-28

The under 17.5s knew they would have a tough game on their hands coming up against second placed Lexton. But with almost a full team for the first time this season the boys got off to a flying start and outscored Lexton in every

Continued on page 15

48
Main

Local Bar
Local Beer
Live Music

Open: Every Thursday, Friday, Saturday & Sunday

Maldon Newsagency
& Tattslooto

Open every day of the year! Shop when it suits you!
Come and browse our ever changing range of cards, ribbon and wrap.
Telstra & Optus prepaid mobile cards in stock.
Home delivery of all major newspapers, magazines & The Tarrangower Times.

effpos

Your local specialist
stationery store
Phone 5475 2433

In
store
ATM

• ALAN
• CHERYL
• STEVE

LANG

CARTAGE & DRAINAGE CONTRACTORS

House Sites - Driveways - Postholes
General Trenching & Excavations
Septic Tank Installations
Sand - Soil - Gravel
(Own supply of Muckleford Gravel)

licensed drainer no: 39620

Ph: 5475 2218 0438 560 128