

Tarrangower Times

Est 1858

www.facebook.com/TarrangowerTimes

www.tarrangowertimes.com.au

Friday, June 4, 2021

Inside
this
week

Community
Grants Launch.
Page 3



Heaps of Letters
to the Editor.
Pages 5, 9,
10 & 15



Know your local.
Page 9



Gravestone pranksters revealed



☆ The pranksters responsible for the gravestone in Main Street.

Former shire councillor Sharon Telford and her husband Chris have outed themselves as the pranksters who placed a headstone in one of the controversial out-stands on Maldon's Main Street.

Actually, the idea was conceived by Sharon's sister, Helen Whiteman who, while taking photos at Maldon Cemetery, sent a snap of James Murphy's headstone to the couple for inspiration. Craft wood from the back shed and felt pens purchased by Sharon from the local newsagency were all that was required to create the irreverent icon. Another member of the family, Kathy Whiteman, was responsible for the flower arrangement.

"Thankfully neither Graeme nor Barb were there or they

would have asked what I was doing," said Sharon. The headstone read: 'Herein Lies Maldon Heritage. Died 21st May 2021. Sadly neglected and misunderstood for many years. Passed away without remorse.' The words reflect sentiments expressed to Sharon by many local residents and passers-by as she sold raffle tickets on the street.

Many, she said, held grave concerns for the loss of the town's heritage appearance.

Thompson Family Funerals
NFDA (03) 5472 2202
123 Maitlyn St, Castlemaine 3450

Compassion, Respect & Understanding

Prearranged & Prepaid Funerals available.

Peter Thompson and family of **Thompson family Funerals** Proudly serving the people of Castlemaine and district since 1950
~ The family that care ~



ADVERTISEMENT



Federal Member for Bendigo

LISA CHESTERS MP



PO Box 338 Bendigo 3552
Cnr. Williamson & Myer Sts, Bendigo 3550

T: 03 5443 9055 • F: 03 5443 9736
E: Lisa.Chesters.MP@aph.gov.au

www.lisachesters.org

@LMChesters • @LMChesters

Authorised by L. Chesters, ALP, 16 Myers Street, Bendigo

ADVERTISEMENT

Maree Edwards MP

STATE MEMBER FOR BENDIGO WEST

Listening Posts are postponed until further notice.

My office is still available for assistance, please contact us on 5410 2444 or maree.edwards@parliament.vic.gov.au.

Suite 3, 16 Lockwood Road
(PO Box 1238),
Kangaroo Flat, Vic 3555
P: 5410 2444

www.mareeedwards.com.au

Authorised by M Edwards, 16 Lockwood Road, Kangaroo Flat
Funded from Parliamentary Budget





Community Diary

If you have a community event that you would like publicised in this Community Diary, please email: karen@tarrangowertimes.com.au or send details to us at PO Box 18 Maldon 3463, or drop a note into the letterbox in the office door to have it listed.

This is a free community service.
It is a good idea to advertise closer to the event.

EVERY DAY EXCEPT MONDAY

LIONS CLUB OP SHOP 10am to 2pm. Enq: Jenny 0407 158 833.

FIRST SUNDAY OF THE MONTH

CASTLEMAINE FARMERS MARKET, 9am to 1pm at the IGA carpark in Forest Street. Enq: www.castlemainefarmersmarket.org or 0490 366 243.

EVERY SUNDAY

MALDON MUSEUM, Shire Gardens, 11.30am - 2pm. Admission \$2.50 adults, children free.

EVERY SUNDAY FORTNIGHT

MALDON PÉTANQUE CLUB games every second Sunday at St. Brigid's at 1.30 for a 2pm start. Enq: Sandy Noble 0429 006 130. Andrew Leckie 5400 1054.

SOCIAL PÉTANQUE is played on the Penny School pistes every second Sunday, alternating with MPC, at 1.45 for a 2pm start, unless rain is bucketing down, or it is over 30°. Enq: 0459 093 452.

SECOND SUNDAY OF THE MONTH

MALDON MARKET: Hand Made, Home Grown, 9am – 1.30pm. Bill Woodfull Recreation Reserve.

LAST SUNDAY OF THE MONTH

CASTLEMAINE REPAIR CAFE, 10am - 1pm at Castlemaine Community House ,30 Templeton St. Enter from back door. Bring along broken electrical, general sewing repairs and maybe a cuppa and weekend paper in case you have to wait a while. No kitchen because of COVID. Gold coin donation. Learn to repair.

EVERY MONDAY

OCCASIONAL CHILDCARE, Maldon Neighbourhood Centre 9.30am-2.30pm. Enq. 5475 2093 or info@maldonnc.org.au.

ATHENAEUM LIBRARY High Street, Maldon. 2-4pm. Suzette Phillips 0429 776 893.

MALDON BRIDGE CLUB at the Maldon Hotel, 1.15pm - 4.30pm. New players welcome including solo players. Enq: Danny Murphy 0430 733 782.

MALDON WALKING GROUP, starting at 9.30am for a gentle walk. Start at Maldon Neighbourhood Centre. No booking required. Cancelled if heavy rain or a Code Red Day. Enq: 5479 1000.

SOCIAL GOLF – 8.30am – 9 holes, free for members or \$10 green fees. Enq: maldongolf4u@gmail.com or Gay Reid 0413 013 766.

Tarrangower Times

Your Paper, Your Stories, Your News!

Est 1858

Available from: Maldon Newsagency, Castlemaine Newsagency, Newstead Country Store and Baringhup General Store.

4/93 High Street (PO Box 18), Maldon Vic 3463.
Tel: (03) 5475 2256

Email: editor@tarrangowertimes.com.au
www.tarrangowertimes.com.au
www.facebook.com/TarrangowerTimes
www.instagram.com/tarrangower_times

Other contact details:

Jade Jungwirth (Editor) 0408 594 246 or jade@tarrangowertimes.com.au
Karen Sloan (Design | Accounts) 0404 357 556 or karen@tarrangowertimes.com.au
Kerry Cain (Advertising) 0419 102 723 or kerry@tarrangowertimes.com.au

Guaranteed Office Hours:

Mon: 9am - 11am, Tues: 9am -12pm, Wed: 9am - 1pm.

ADVERTISEMENT LODGEMENT TIMES:

- Classifieds - 12noon Tuesday.
- Casual Display - 12noon Tuesday.

CONTRIBUTED ARTICLES:

- Community and News 12noon Tuesday.
- Late notices such as Births and Deaths by 10.30am Wednesday.

The Tarrangower Times is a member of the Victorian Country Press Association. The Times is owned by Tarrangower Times Pty Ltd, edited by Jade Junwirth and printed at Express Print, Morwell.

Copyright in this publication is held by Tarrangower Times Pty Ltd. Reproduction of any portion including advertisements and photographs without permission is not permitted and may constitute an offence. Copyright © 2021.

FIRST MONDAY OF THE MONTH

CRYPTIC CROSSWORD MORNINGS from 10am MNC Community garden.

SECOND MONDAY OF THE MONTH

THE MALDON GARDEN, FLORAL ART AND CRAFT CLUB, 2pm. Enqs: Carmel 0417 014 763 or Robyn 0418 544 966.

THIRD MONDAY OF THE MONTH

CRYPTIC CROSSWORD MORNINGS from 10am MNC Community garden.

THE MALDON GARDEN, FLORAL ART AND CRAFT CLUB, 2pm. Enqs: Carmel 0417 014 763 or Robyn 0418 544 966.

EVERY TUESDAY

COMMUNITY TRANSPORT SERVICE. Book the day prior for your door-to-door service. Trips within and to Maldon & Castlemaine in the morning, fortnightly trips to Maryborough and Kangaroo Flat. Phone 5475 2093. \$3 one way, \$5 return. More info: www.maldonnc.org.au/community-bus.

MAH JONG for seniors 10am-1pm at Maldon Community Centre. Beginners welcome. Enquiries: Kerry 0407 738 855.

COMMUNITY PANTRY Delicious home-delivered meals. Order info@maldonnc.org.au or 5475 2093.

MALDON BOWLING CLUB, at 10am, as long as COVID restrictions allow.

MALDON BRISK WALKING GROUP, 7.30am meet at Maldon Neighbourhood Centre.

MALDON SOCIAL TABLE TENNIS 1.30pm-3.30pm, Maldon Community Centre. Cost \$10 subscription to Maldon Seniors, \$2 donation on the day. Enq. Anne 0425 859 662.

MALDON CROQUET CLUB 9.30am. New members welcome. Enq. Ray Austin 0448 338 251.

YOGA AND RELAXATION, Maldon Neighbourhood Centre Hall. Evenings 6-7.30pm. Come and try, first class free. Enq: Andrea 0427 772 878.

FIRST WEDNESDAY OF THE MONTH

NUGGETTY LAND PROTECTION GROUP meeting. For further info contact Christine Fitzgerald – ckfitz5@bigpond.com – 0419 347 408.

EVERY WEDNESDAY

ATHENAEUM LIBRARY High Street, Maldon. 2-4pm. Enqs Suzette Phillips 0429 776 893.

CANASTA for seniors 10am at Maldon Community Centre. Beginners welcome. Enquiries: Lyn 0409 566 551.

COMMUNITY LUNCH, 12 noon, Maldon Community Centre. Delicious two-course lunch. Every Wed. during school terms. All welcome. \$5. Enq: 5475 2093.

EASY STEPS TO FITNESS AEROBICS, 9am - 10am Maldon Neighbourhood Centre, beginners welcome. Starts 5 May. \$10 concession, \$15 full. Enq: Sean 0419 210 043.

MALDON MEN'S SHED, 10am to 4pm at rear of Vintage Machinery Museum (accessed from Phoenix Street). All welcome. Contact Barry Murfett 0403 352 753. (Note: Closed on days of Total Fire Ban or over 38°).

MALDON MUSEUM, Shire Gardens, 11.30am - 2pm. Admission \$2.50 adults, children free.

HATHA YOGA WITH WENDY 5 – 6.30pm at Maldon Neighbourhood Centre.

YOUNG AT HEART PLAYGROUP, Maldon Neighbourhood Centre 10-11.30am. Enq. 5475 2093 or info@maldonnc.org.au.

EVERY WEDNESDAY FORTNIGHT

ART & CRAFT GROUP 1.30pm – 4pm at Maldon Neighbourhood Centre.

EVERY FOURTH WEDNESDAY

MALDON CEMETERY FRIENDS WORKING BEE 9.30am - 11.30am. Please come out and help get our historic cemetery clean, weed free and blooming! Our cemetery grounds and buildings need a little care and attention from some willing helpers on a regular basis. Training, equipment and morning tea provided. BYO Hat, sunscreen, insect repellent and especially gardening gloves.

EVERY THURSDAY

GENTLE TAI CHI Resumes 30 January, 2020. 11.30-12.30 at Maldon Neighbourhood Centre. Contact Jenny 0417 475 270 to register.

MALDON BOWLS CLUB, Bowls practice anytime Thursday until dark.

MALDON BRIDGE CLUB 12.45pm to 4.30pm at the Maldon Hotel. New players welcome including solo players. Enq: Danny Murphy 0430 733 782.

MALDON CROQUET CLUB 9.30am. New members welcome. Enq. Ray Austin 0448 338 251.

MALDON CHESS CLUB 10.30am. Do you play? Come along. Do you want to learn? Come along. For enquiries contact John 0438 012 076.

OASIS KID'S CLUB, 3.20pm-4.45pm Maldon Baptist Hall, Edward Street. All primary aged children welcome. Free. Enq Gavin & Julie 5475 2338 or 0458 084 728.

SECOND THURSDAY OF EVERY MONTH

FREEMASONS MALDON meet at 7.30pm. Enq: Peter 5472 2202.

EVERY FRIDAY

ATHENAEUM LIBRARY High Street, Maldon. 2-4pm. Enqs Suzette Phillips 0429 776 893.

CHAIR YOGA 11am – 12 noon at Maldon Neighbourhood Centre.

COMMUNITY PANTRY Delicious home-delivered meals. Order mtalexcommunitypantry@gmail.com or phone 0472 537 866.

COMMUNITY TRANSPORT SERVICE. Book the day prior for your door-to-door service. Trips within and to Maldon & Castlemaine in the morning, fortnightly trips to Maryborough and Kangaroo Flat. Phone 5475 2093. \$3 one way, \$5 return. More info: www.maldonnc.org.au/community-bus.

MALDON MUSEUM HISTORY RESEARCH CENTRE 10am - 1pm.

MALDON SOCIAL WALKING GROUP, Gentle walking. 9.30am meet at Maldon Neighbourhood Centre.

HATHA YOGA WITH WENDY 9 – 10.30am at Maldon Neighbourhood Centre.

IMT - ARE WE BEING HEARD? You can listen to us on your phone you know. Listen on the TuneIn Radio App- MAINfm 94.9, or on your computer <http://mainfm.net>, OR SMS during the program on 0488 863 186. Please SIGN Your SMS.

SOCIAL GOLF – 8.30am – 9 holes, free for members or \$10 green fees. Enq: maldongolf4u@gmail.com or Gay Reid 0413 013 766.

SECOND FRIDAY OF EVERY MONTH

MALDON RSL SUB-BRANCH Monthly meeting in the Maldon RSL Hall behind the Athenaeum Library at 3pm. All Service and ex Service members are welcome to attend. No meeting in January.

LAST FRIDAY OF EVERY MONTH

MAREE EDWARDS LISTENING POSTS are postponed until further notice. My office is still available for assistance, please contact us on 5410 2444 or maree.edwards@parliament.vic.gov.au.

EVERY SATURDAY

ATHENAEUM LIBRARY High Street, Maldon. 9.30am - noon. Enqs Suzette Phillips 0429 776 893.

MALDON MEN'S SHED From 9am to 12pm at rear of Vintage Machinery Museum (accessed from Phoenix Street). All welcome. Contact Barry Murfett 0403 352 753. (Note: Closed on days of Total Fire Ban or over 38°).

MALDON CROQUET CLUB 9.30am. New members welcome. Enq. Ray Austin 0448 338 251.

THURSDAY 17 JUNE

MALDON GOLDEN MOVIES *presents: **As it is in Heaven***, 7.15pm for a 7.30 start, Maldon Neighbourhood Centre, corner of Church and Edwards Sts. Bring your smart phone to use the QR Code on the door. Enquiries: 5475 2093 or www.maldonnc.org.au.

SATURDAY 17 JULY - POSTPONED

MALDON GARDEN CLUB EVENT POSTPONED ~~welcomes you to a presentation by Penny Woodward at 1pm-4pm Maldon Community Centre. Tickets \$35 incl. 3 raffle tickets and afternoon tea. Enq: Carmel 0417 014 763 or carmelnaismith@gmail.com.~~



Bendigo Health Psychiatric Services Regional Triage

24 hour emergency –

1300 363 788

EMERGENCY COUNSELLING SERVICES

Kids Helpline: 1800 55 1800

Lifeline (24 hours): 13 11 14

Mensline Australia: 1300 78 99 78

Parentline: 13 22 89

Suicide Helpline: 1300 651 251

Beyondblue: 1300 22 4636

Maldon streetscape revitalisation project



THE *Tarrangower Times* spoke with former Councillor Sharon Telford this week about the highly disputed out-stands on Main Street.

Sharon was on the original subcommittee that provided recommendations regarding a pedestrian crossing.

“It was a huge commitment by a lot of people who gave their time and worked really hard to get the streetscape right.”

Sharon told the *TT* that in 2016 there was a push to gain momentum on getting underground power, packaged along with revitalisation of the town.

A steering committee was formed, and a bid was put together to take to government.

Subcommittees were established for various elements of the streetscape design, and people with particular skills and knowledge were on each committee.

According to Sharon, there was a subcommittee providing advice with respect to pedestrians, lighting, heritage and plants.

Public meetings were held, council consultants were brought in, and a grant was submitted.

Recently, new council consultants were brought in and none of the initial recommendations were implemented.

Recommendations made by the original Pedestrian subcommittee were:

- Wider openings for scooters and wheelchairs
- Crossings which are adjacent one another
- Treatments so cars can't block access
- Use of posts and rails which are already present in the town.

Sharon told the *TT* that no one on the subcommittee was shown any designs by council or made aware that the current out-stands would

be installed.

Peter Cuffley, a resident in the area for 50 years, was also involved with the Streetscape Committee.

“It’s a sad thing for the town, which has had an open streetscape since 1854. It has always been fine; people have managed to cross the street for years,” he said. “Heritage towns in years gone by didn’t have plants—it’s a modern traffic engineering concept.”

He expressed his concerns over the speeds of trucks and cars on High Street and believes this is the area most needing a crossing in Maldon.

Sharon mirrored Peter’s concerns about this particular stretch of road.

As a member of the Tarrangower Village Committee of Management at the time, she was involved in consultations with the residents and assisted in writing a report with recommendations which they took to the

manager of Regional Roads Victoria.

They were told by the manager of Regional Roads Victoria that High Street is the width of a four lane highway. He discussed options in relation to how traffic responds to various road treatments and informed the group that if they were able to raise \$170,000 Regional Roads Victoria would be able to deliver a safe crossing.

Plans were made to implement a crossing while maintaining the heritage appearance of the town.

This proposal was taken to local council and it appears nothing has been done.

A statement issued by Mount Alexander Shire Council regarding the pedestrian crossing states:

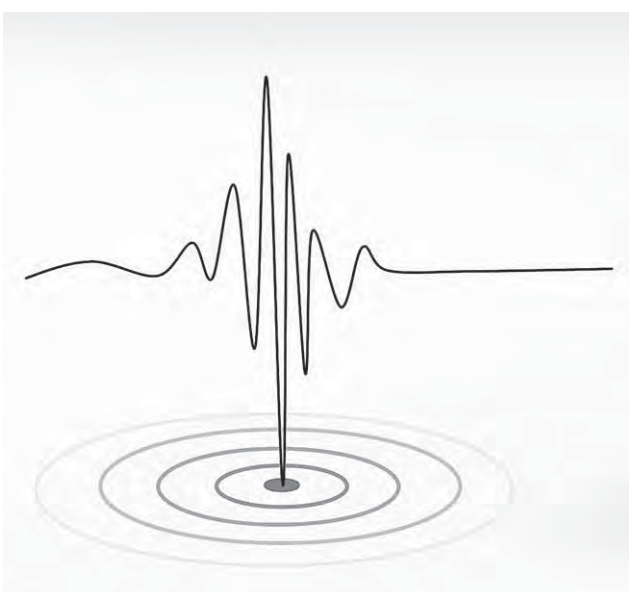
“Each of the prototype materials has been selected with consideration given to the Maldon Heritage Design Guidelines, and in consultation with the Heritage Working Group, project consultants, Council staff and local horticulturists.

“We’re inviting people to use the pedestrian crossing point, and then tell us what they like about the various kerb and landscape options there,” said Tanya Goddard, Executive Manager Infrastructure, Mount Alexander Shire Council.

Community input on the trial pedestrian crossing point will be incorporated into the final design.

Online feedback forms are available at shape.mountalexander.vic.gov.au.

Earthquake in Maldon



THERE was a magnitude 3 earthquake in Maldon on Thursday 27 May.

The effects of the earthquake were felt as far as Bendigo and Daylesford, with 300 fault reports on the Geoscience webpage.

Senior seismologist, Dr Trevor Allen, from Geoscience Australia, told the *Tarrangower Times* that fault lines run all across Victoria, yet they don’t all necessarily produce earthquakes.

Data shows a cluster of earthquakes in the Castlemaine/Bendigo region.

In the last 20 years there have been around 27 earthquakes in a 100 km radius from where the event occurred in Maldon, which equates to around one or two a year.

It has been approximately 20 years since there has been

a size 3 or larger magnitude earthquake in the area.

According to Dr Allen there is a possibility that aftershocks may be felt over the next one to two weeks, although it is difficult to predict due to the size of the shock.

He explained that we are still experiencing shocks from a series of three magnitude 6 earthquakes in Tennant Creek in Central Australia in 1988.

“I am awed by the forces the earth can produce,” he said.

Dr Allen asks readers to report earthquakes to the Geoscience Australia website: earthquakes.ga.gov.au. “This is incredibly useful data to determine national building codes and standards.”

Launch of Community Grants 2021 program



☆ Shannon Burdeu discussing the grants process with the eager crowd.

THE bad weather and COVID restrictions looming did little to deter a large and enthusiastic crowd from turning up at the Maldon Golf Club last Wednesday night to hear about the launch of the Community Bank Maldon & District \$150000 grants program.

The program is now open and closes on Friday 9 July.

Community Bank Maldon & District Chair Ross Egleton was pleased with the community’s excited response to the program launch.

“The large number of people attending demonstrates the importance of our

Continued on page 10

Maldon Newsagency & Tattsлото



Open every day of the year! Shop when it suits you! Come and browse our ever changing range of cards, ribbon and wrap.

Telstra & Optus prepaid mobile cards in stock. Home delivery of all major newspapers, magazines & The Tarrangower Times.



Your local specialist stationery store
Phone 5475 2433

In store ATM

MALDON



GROCERIES OPEN

Mon-Sat: 7.30am - 7pm
Sun: 9am-5.30pm

LIQUOR OPEN

Mon-Thurs: 9am - 7pm
Fri-Sat: 9am - 7.30pm
Sun: 9am-5.30pm

SPECIALS

from Wednesday 2nd June to Tuesday 8th June

Continental Cup Soup 2 serve Selected Varieties \$1.05 ea	30 Can Block xxx Gold \$43 ea
Australia Pink Lady Apples \$3.69kg	Carlton Dry 24 pack \$46 ea

11-17 Main Street Maldon.
Ph: 5475 2458

STEVE BARTY GAS

Proudly servicing Maldon and surrounding districts in:
Domestic LPG deliveries • LPG appliances
Forklift gas • Industrial and hospitality gases
BP oils and greases

For all your LPG needs, contact Steve Barty
5472 1262 OR 0417 524 713

MALDON *Quality* BUTCHERS

Locally farmed
bio-dynamic beef &
lamb
Free local delivery

Meat voucher is
on hold until
further notice.

19 Main St. Ph. 5475 2271

Reconciliation Week opens



☆ Uncle Rick and Kathryn Coff presenting awards.



☆ Vote 1 Uncle Rick for Mayor hoodie.



☆ Celtic-Indigenous fusion duo Kinja.

THE earth literally shook at the opening of National Reconciliation Week last Thursday.

A brief shudder was felt by the audience at the Market Building in Castlemaine as a small earthquake made itself felt. They were listening to Vic Say, winner of the Senior Citizen of the Year Award for 2020. Vic, who had won the award for his work with local Indigenous and South Sudanese communities, discussed how the humanity of Indigenous people was not even recognised until the 1960s.

Paulette Nelson, descendant of Henry 'Harmony' Nelson and sister of Elder Uncle Rick, gave the welcome to country.

A representative from Mount Alexander Shire Council spoke to the

audience about the theme for this year's Reconciliation Week: 'More than a word. Reconciliation takes action.'

Details were given relating to the Council's upcoming Welcome to Country project, an interactive exhibition that will be housed in the Market Building.

Celtic-Indigenous fusion duo Kinja performed a moving rendition of *I am Australian*, with Sarah James singing and Ron Murray on the didgeridoo.

Ron, a Wamba Wamba man living in Yapeen, captivated the audience with a story from his people about how Burra the kangaroo became their totem.

Kathryn Coff, coordinator of Nalderun, discussed the trauma of Sorry Day for her family and how Nalderun

was important in effecting change for their future and that of their kids.

"There's lots of learning and love that needs to be done, she said"

Unfortunately, due to the lockdown, remaining events for Reconciliation

Week have been cancelled or postponed.

When the lockdown has been lifted, take a look at the wonderful exhibition of art, portraits and artefacts on display at the Market Building, 44 Mostyn St., Castlemaine.

Sorry for Sorry Day speech

AN apology was issued at the opening of National Reconciliation Week on behalf of Mt Alexander Shire Mayor Tony Cordy for his speech at Sorry Day.

When contacted by the *Tarrangower Times* Mayor Cordy said that his speech wasn't appropriate.

He told the *TT* that he

had not been to a Sorry Day before.

"It wasn't really the right speech for the occasion," he said. "Please note that I did acknowledge the traditional owners of the land and paid respects to the Dja Dja Wurrung and what a great job they are doing."



☆ Ron Murray playing the didgeridoo at Reconciliation Week Opening.

PSA/DET0016-03



3-YEAR-OLD KINDER
Best Start
Best Life

To dream big, our kids need the best start in life.

It's why the Victorian Government is rolling out Three-Year-Old Kinder **across the state in 2022**. This means new kindergartens, upgraded facilities and new teaching jobs.

Find out more: vic.gov.au/kinder



Newstead Goods Shed and Harcourt Station restoration projects



☆ Newstead Goods Shed opposite the Arts Hub.



☆ Historic Harcourt Railway Station abandoned but not forgotten.

TENDERS have opened for restoration works on both the historic Newstead Station goods shed and the Harcourt Station building, which are set to be transformed into new spaces for locals and visitors to enjoy.

The works are scheduled to get underway late this year, with improvements to the Newstead Station goods shed including carrying out structural repairs and refurbishment, as well as installing a kitchenette and accessible

toilet so the building can be used for community events and meetings. The Maldon & District Community Bank will be the head tenant and the building will be managed by the Redshed Arts Workshop Inc. as a community arts workshop, learning and skills centre.

The works on the Harcourt Station building will include carrying out structural repairs and refurbishment, as well as installing a kitchenette and accessible toilet so the building can be used

for community events and meetings. Mount Alexander Shire Council will be the head tenant and it will be managed by the Harcourt Progress Association as a community neighbourhood house with meeting, training, office and performance spaces.

Local contractors interested in carrying out the works are encouraged to apply, and should visit the website tenders.vic.gov.au

Letters to the Editor

Carriers Arms

Hello to readers of the *TT*, I am greatly concerned regarding the abandoned derelict condition of possibly one of the most important and historical buildings in central Maldon. It was once the Carriers Arms and former Cobb and Co booking office and the former home of one of Maldon's great former identities, our loved and remembered Coral O'Hara - famous for her whistling piano playing and acts on the boards at the Theatre Royal also down in Melbourne, she was greatly admired. In later life she was a vocal and passionate supporter for nature and our planet; constantly lecturing anyone in talking distance from her front door. Now the Carriers Arms is abandoned open to the elements and an invitation for vandalism and possible burning down with other heritage buildings in direct proximity, while we all get bothered about Maldon streetscape issues there is a possible destruction by fire of Central Maldon if proper protection to this extraordinary State Heritage building remains abandoned; sadly unloved continues.

Owen Martin

Carriers Arms

I am writing to reassure residents of Maldon concerned about the future of the former Carriers Arms Hotel, that major repair and conservation works to the building are due to commence shortly.

A contract has been signed with a builder experienced in conservation works in the local area to undertake the restoration and conservation works. The work includes the replacement of damaged roof slates, flashings and gutters, repairs to the external render, doors and windows, and the refurbishment of the interior including new floors, wiring

and plaster repairs.

The owner of the property is acutely aware of the significance of Carriers and is investing a significant amount of time and resources into restoring the building and securing its future. A Planning Permit has been obtained for sensitive additions to the rear of the building that will enable the resumption of its original function as a commercial building in this significant location in Maldon, and for the construction of a new residence at the rear of the property.

We are very pleased to be involved in the conservation of this significant building and are sure that all in Maldon will be pleased with the result.

Ian Coleman

Director

Coleman Architects

Pty Ltd

Architects & Heritage Consultants

Plaistow Biggest Morning Tea 2021

What could go wrong? The privately owned marquee collapsed in the wind and rain on Tuesday, total reorganisation of when and how on Wednesday, cold and miserable first thing Thursday morning and COVID threats all week. But still the show went on with more money raised for cancer research than ever before at Plaistow, in fact over \$6100 and still coming in online donations. There would have been much more if the Saturday had not been cancelled.

Lilian and Peter would like to sincerely thank the visitors who contributed over \$850 at the gate, the volunteers who served tea and coffee, the gent who washed dishes (he still has wrinkles on his fingertips), the people who donated raffle prizes, Maldon Community Bank who lent the replacement marquee, the people who

manned the stalls and who donated product to sell and the smiling musicians from *Platform Souls* who played, constantly entertaining guests. We must also mention our granddaughters, Madison, Poppie and Erin who took annual leave to help and made all the scones, erected tents, shifted tables and chairs, filled the wood box, kept the stove hot and any other tasks needed.

A special mention and thanks for the generous and well written articles in the local press. Your photos and stories are obviously read both in print and online. In fact we had phone calls from all over Victoria checking on details and would have had a very busy Saturday but for the COVID shutdown.

If anyone would like to donate, search 'Lilian Skilbeck's biggest morning tea' on the Cancer Council website.

Lilian and Peter Skilbeck
5476 2450 or
0419 884 710.

Cemetery on Main Street?

The Mount Alexander Shire Council has constructed a so called 'Trial Pedestrian Crossing' on Main Street, Maldon.

It has the hallmarks of four graves which is ridiculous. Put simply it's a no brainer. Furthermore, it is not a Pedestrian Crossing of any description as it does not comply with the Victorian Road Rules, so pedestrians could have a false sense of security as drivers are not compelled to give way at any crossing that has no lawful status. Downright dangerous! I reckon that council is leaving itself open to litigation. Council needs to go back to the drawing board and arrive at a sensible practical solution.

Keith Roberts

Maldon

Letters continued on page 9.

THE LAST HURRAH

Original Funerals for Unique People

Have a funeral that actually reflects the life of the person you have loved and lost. We bring YES energy to funeral planning, and offer kind-hearted, professional, and authentic care at a reasonable price.



www.lasthurrahfunerals.com.au

0430 378 388

MUCH ADO

GENERAL STORE. MALDON

22 Main Street

Gin Masterclass Friday 11th June at 6.30pm

Cost \$160 pp

- Meet the founder + maker of Heathcote Gin
- Enjoy a seven Gin tasting/ samplers, cocktail sampler, garnishes, various mixers, tasting notes + cocktail
- Enter the delicious world of locally crafted Gin
- Take home a bottle of Heathcote Gin's Founders Gin (bookings essential + limited spaces)

BOOK VIA INSTAGRAM/FACEBOOK MESSAGE, EMAIL OR DROP

IN-STORE TO SECURE YOUR PLACE IN GIN HEAVEN!

HOMEWARES – TABLETOP – GARDEN – PROVISIONS – ALCOHOL – MEET THE MAKERS WORKSHOPS

Shop Online: www.muchado.com.au

Follow Us: @muchadomaldon

Email: info@muchado.com.au

Call 03 5475 1005

CASTLEMAINE FINANCIAL SERVICES

- Accounting & Taxation
- Business Services
- Financial Planning
- SMSF Advice

12 Mostyn Street, Castlemaine. Phone: 5470 6100

48
Main

Local Bar
Local Beer
Live Music

Open: Every Thursday, Friday, Saturday & Sunday

Super Blood Moon



“I took this long exposure photo with an iPhone on a tripod while the moon was fully eclipsed. It shows the moon (in the top left corner) and part of the Milky Way which was quite visible because of the darkness of the sky at that moment. The colours have been enhanced because at those low levels of light, even though they are there, they aren’t visible to the human eye.”

A super blood moon occurs when the Moon is directly opposite the Sun.

It doesn’t happen every full moon —only when the Moon’s orbit is aligned so it passes through some part of Earth’s shadow.

When the Moon moves through the deepest part of the Earth’s shadow (the umbra), it takes on a distinctive red glow — an effect caused by the bending of light in Earth’s atmosphere.

PHOTOS of the spectacular lunar eclipse on Wednesday night flooded social media.

Geoff Palmer sent this photograph to the *Tarrangower Times*.

Maldon and Newstead Primary Schools in lockdown



IT’S back to remote learning for Victorian students following last week’s announcement of the latest lockdown across the state.

Alisa Burdett, Principal of Maldon Primary School, told the *Tarrangower Times* that the school is using a mixture of online learning tools such as Webex and Google Classroom, along with physical paper packs, to assist with home schooling.

“It’s been fairly smooth this time,” she said. “We just need to be creative and think in different ways. We are aware that parents and carers may also be trying to work from home so we are trying to be as flexible as possible.”

Kathy Callander, Principal of Newstead Primary School told the *TT* that the school had prepared for a lockdown to the best of their ability.

“It has been a short turn-around, which can put pressure on teachers,” she said. “However, it is a statewide lockdown so we are all in the same position.”

We love your Letters to the Editor

We are always interested to hear your views on current topics and important issues.

Please include your full name, address and phone number for verification purposes. Only your name and location will be included if the letter is printed.

You can choose to withhold your name and/or location in print, but you must provide this information to the *TT*.

Please keep letters to 300 words or less.

By submitting a letter, you agree that we may edit it for legal, space or other reasonable reasons. Publication does not imply that the *Tarrangower Times* endorses your view.

Please send your letter to editor@tarrangowertimes.com.au or drop it into at our office at 4/93 High Street, Maldon 3463.

AGED 50 AND OVER?

COVID-19 vaccines continue to roll out to those most at risk.

People aged 50 and over can receive their COVID-19 vaccine at one of the selected vaccination clinics or at participating general practices.

It’s voluntary, free and the best way to protect you and your community.

Our Therapeutic Goods Administration continues to closely monitor the safety of all vaccines in Australia.

To find out where you can get vaccinated visit australia.gov.au or call 1800 020 080

COVID-19
VACCINATION
KEEPING AUSTRALIA COVID**SAFE**

INSPECT BY APPOINTMENT



Campbells Creek

31 Moscript Street

\$465,000

FAB FORTIES COTTAGE WITH BALCONY OUTLOOK AND 700M2 GARDEN

3 1 1

Positioned on a 700m2 garden with a north facing rear, this 1940s era weatherboard cottage features a balcony with views, and a double door entry with central hallway and Baltic timber floor. The home has high ceilings, picture railings, 2 large double bedrooms, a formal lounge room and an adjoining dining room or 3rd bedroom. There is an electric kitchen with meals area, bathroom with shower over the bath, and a toilet. The rear garden is private and well fenced with a north orientation and lots of space for gardens or playing. The property has a garden shed, rear porch and an off-Street park. Live in now and have the option to open the back up for further renovations later!

INSPECT BY APPOINTMENT



Castlemaine

34 Wheeler Street

\$875,000

WONDERFUL WHEELER STREET LOCALE WITH GARDENS AND GARAGING ONE OWNER – BEAUTIFULLY CARED FOR BRICK HOME, SO CLOSE TO THE TOWN CENTRE!

4 2 4

Positioned on Wonderful Wheeler Street, just an easy 700m from the Supermarket and Shops, this special long held property can provide you a central convenient lifestyle without the compromise. The spacious brick veneer home has been thoroughly renovated and is set on a 983m2 allotment with access from both Wheeler and William Streets. The home offers a large front verandah entry and a rear garden room outdoor entertaining area, 4 double bedrooms with robes and new carpets, main and ensuite bathrooms, 2 living areas plus a sun-room with garden outlook, a modern kitchen with dishwasher and stainless steel oven, plus meals area. There is ducted gas heating and ducted evaporative cooling throughout.

INSPECT BY APPOINTMENT



Castlemaine

4 Douglas Crescent

\$545,000

CHARMING MID-CENTURY TIMBER HOME WITH NATURAL LIGHT & TALL CEILINGS LEAFY, PRIVATE GARDENS!

2 1 2

Situated in a quiet street, nearby the Winters Flat Primary school and within walking distance to the shops and train station, this charming 1950s property is ready for new life. With a sunlit entry vestibule and French doors opening to the main living area, the home is intriguing from the first step. The kitchen has a functional layout with servery window to the lounge, electric cooking, dishwasher and adjoins the dining space with VJ wall paneling which adds a coastal feel. There are two bedrooms, main with a built in wardrobe, a central bathroom, external laundry with a bath and separate second toilet. The grounds feature mature shade trees and rock garden beds while the covered outdoor patio area has your entertaining needs sorted and the single garage offers a perfect workshop.

INSPECT BY APPOINTMENT



Castlemaine

Unit 1, 60 Blakeley Road

\$465,000

SUPER BRICK UNIT WITH STUDIO SPACE AND LOTS OF SOLAR!

2 1 1

Set in a block of 2 units in a quiet setting, this two-bedroom, well-maintained brick unit comprises a spacious living/dining room, kitchen, bathroom, laundry, both bedrooms have built-in robes, its newly carpeted has a gas heater and air conditioner. The garage has been converted to a home office/studio/workshop (could easily revert back to a lock up garage); there's a private back garden with courtyard & car space, and power bills are very low with a huge 4kw solar system! The unit would make a charming and convenient home or an ideal investment - close to Castlemaine Secondary College, Kaweka, Golf Course, walking trails and the north end of the Botanical gardens!



Rob Waller

Director/Sales

rob@wallerrealty.com.au

0418 571 130



Narelle Waller

Director/Leasing

narelle@wallerrealty.com.au

0408 571 131



Blasi Mulholland

Senior Asset Manager

blasi@wallerrealty.com.au

0417 311 733



Kirsty Mulholland

Assistant Property Manager

rentals@wallerrealty.com.au

03 5475 1055

Arts About

by [Nancy Whittaker](#)
June, 2021



Catherine seduces our imagination

was only right to learn from the source of fine art. She learned how to paint using tone and a piece of string called a plumb line, which trains the eye to ensure accuracy in shape, height and placement of the still life objects.

Currently Catherine is working on a big commission for clients in Hamburg, organised by Andreas Maske, a German entrepreneur. The work is in its preliminary stages. It is Art Deco in style with cubist inspired buildings in the background. It is very large, 90cm high by 200cm wide.

Catherine's preferred medium is oil on oil-primed linen from Italy. She uses Old Holland and Langridge paints and highly praises the latter, which are manufactured in Collingwood, Melbourne. The figures in her paintings are based on a photo shoot of the model. She then uses a combination of sketches and photos as source material for her painting. When asked how she achieves such smooth surfaces in her work she said it involved a lot of wrist action.

At the beginning of the year, just after opening her Maldon Gallery, Catherine was invited to exhibit by Stuart Purves, Director at the Australian Galleries. She sold all five of her paintings in that group exhibition in April.

Presently in her Maldon Gallery, Catherine 'wears all the hats', which means she does her own publicity, manages the gallery and sells her work. However, as an outcome of her success with Australian Galleries, some of these roles may be subsumed which will mean she can dedicate more of her time to painting.

This may mean that her present gallery will possibly become a working studio that she will open to the public. Catherine said that, despite the drive from Trentham, she loves her Gallery in Maldon, however the offer from Australian Galleries is an opportunity of a lifetime.



☆ Painted Flowers No 1 - 97x76cm.

Almost all of Catherine's original art works are either sold or in progress, however you can buy full sized prints of the originals in her light filled Maldon Gallery at 28 Main Street, open at

weekends from 10am - 4pm, after lockdown.

For further information contact: www.catherineabel.com.

Continued on page 9



☆ Catherine at work in her studio.



☆ Still Life with Carrots - 41x36cm.

ON a very cold autumn morning I met with Catherine Abel in her elegant Art Gallery in High Street, to discuss her aspirations and ideas about her beautifully finished paintings. What makes her work even more fascinating is that she is primarily self-taught.

Catherine's art teachers at both primary and secondary school in Townsville were both very encouraging, then she enrolled in a Diploma of Art but found the teaching style did not suit her desire to paint, guided by the geometric motifs of the Art Deco and Cubist movements for inspiration. These styles were not fashionable in art schools at the time. Also she wisely did not want her work to be shaped by anybody. The influence of Art Nouveau's characteristic curves and the classical-realist disciplines of the Old Masters into her work came later.

In 2000, while she was living in Paris, she set the goal of painting 10 paintings back-to-back, as an exercise to see what would happen, making a pact with herself that she would 'become an artist' if they turned out OK.

They did, and not long after, through happenstance, she was offered the chance to be represented by Just Looking Gallery in California. So she moved to live there in 2002 and exhibited regularly, before returning back to Australia a few years later.

Eventually, some years later, as a 50th birthday treat, Catherine enrolled in a six-week intensive workshop in painting, drawing and art history at the Florence Academy of Art in 2016, where she learned to paint using the traditional techniques of the Renaissance masters like chiaroscuro, evident in her still life paintings to date. Being half Italian, Catherine felt it

During these difficult times...



**We are still here to help you,
24 hours a day, every day**



12 Campbell Street, Castlemaine
Ph 5470 5951 all hours
www.mafunerals.com.au



Community Bank
Maldon, Newstead & Dunolly

Community Bank Maldon & District Grants Program 2021

A Community Grant can support your organisation when it needs the most.

Applications from 1 June - 9 July 2021
Contact Shannon Burdeu on 0478 435 110 or executiveofficer@mdcb.com.au to discuss
bendigobank.com.au/foundation

Bendigo Bank

Community Enterprise Foundation™

The Maldon & District Community Grants Program is a management account of the Community Enterprise Foundation Fund ABN 12 122 648 868 (the Fund). The Bendigo Centre, Bendigo VIC 3550. Sandhurst Trustees Limited ABN 16 004 030 737 AFSL 237906, a subsidiary of Bendigo and Adelaide Bank Limited ABN 11 088 049 176, AFSL 237979, is the trustee of the Fund. 1408008-1408008 CUST_2004471



Kalamazoo Resources Limited (ASX: KZR) is a gold exploration company with a primary focus on identifying commercial gold deposits within the central Victorian Goldfields consisting of two key projects.

Our Castlemaine Gold Project is located approximately 100km NW of Melbourne. It consists of three granted licences (EL6679, EL6752 and EL7112) which lie East and South of the Castlemaine township, covering most of the historic Castlemaine Goldfield.

Our South Muckleford Gold Project is located approximately 150km NW of Melbourne. It consists of two granted licences (EL6959 and EL7021). This project is located only 10km from the Castlemaine Gold Project.

Kalamazoo are planning to conduct low-impact gold exploration activities within these projects, which is primarily public rather than private land.

To discuss any of our projects or if you require any further information, please visit <https://kzr.com.au/castlemaine-gold> or Luke Mortimer on 03 9988 7796 or luke.mortimer@kzr.com.au.



Catherine seduces our imagination

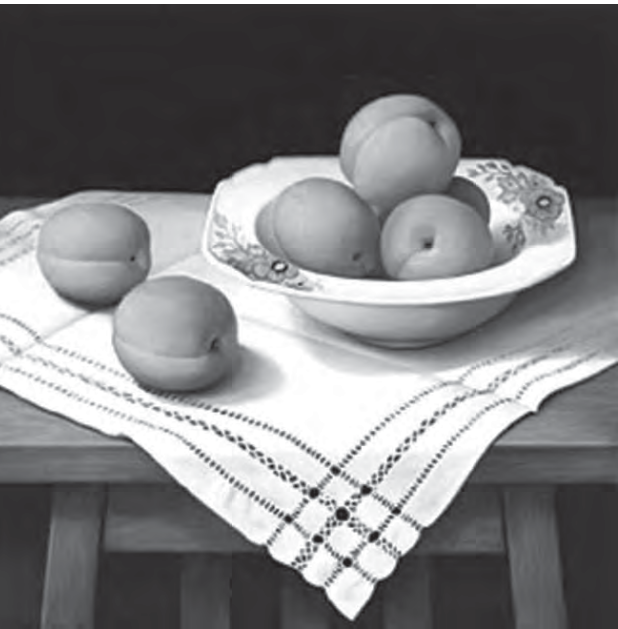
Continued from page 8



☆ Still Life with Quail Feather - 76x56cm.



☆ Still Life with Art Deco Cloth - 41x36cm.



☆ Still Life with Apricots - 36x36cm.



☆ Still Life with Bunnykins - 36x36cm.

LIKE many in our community, I know Ray as the crossing guard at Maldon Primary School. Here, for the past 12 years, he has helped countless children cross the busy road on High street.

His smiling face welcomes the young students and their parents as they begin and end a busy school day.

Dressed in his fluorescent jacket and armed with his stop sign, he safely guides his charges between the flow of trucks and cars, with a sharp blow of his whistle and a call to ‘have a nice day.’

Originally from Charlton, Ray moved to Newstead 40 years ago with his young family. He wanted to live in the country and was glad his kids got to grow up on a beautiful block by the Loddon River.

As we sit by the warm fire inside Berryman’s Cafe and Tea Rooms, Ray takes a sip of his long black and recounts his studies in behavioural science, education and psychology.

These qualifications led him to work at the Aboriginal Co-op in Bendigo for a number of years. He was also involved in setting up the Indigenous Tertiary Support Unit at Latrobe University in

Bendigo in the 80s which is still running today.

Ray had various teaching and pupil welfare roles and balanced these by doing trade work, painting and historical restoration which he has a keen interest in.

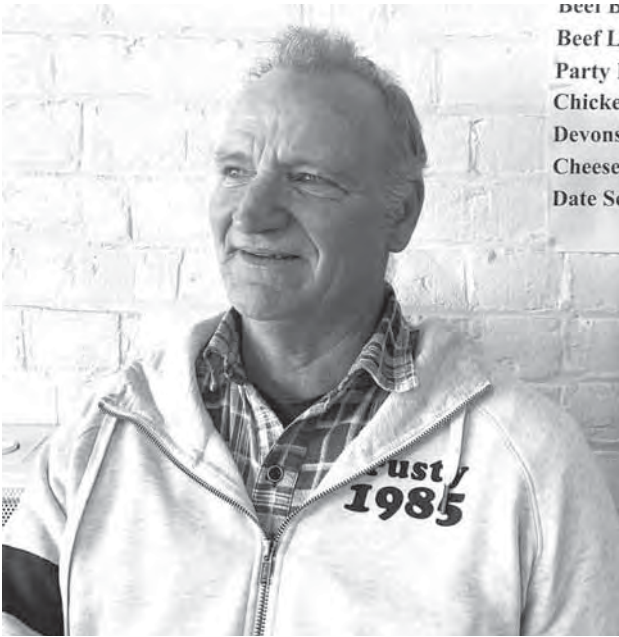
Now officially retired, I ask what Ray does for fun and watch his face light up as he describes working on his sportscar, a red 1976 MGB.

“It’s like a thoroughbred, you’ve got to put the time in if you want it to run at peak performance.”

Although I can’t imagine he has much time to work on his car given the number of commitments he has.

Here’s what ‘retirement’ looks like for Ray!

- Organising bus tours for the Maldon Visitor Information Centre
- Mentoring work at Maldon, Newstead and Winters Flat Primary Schools
- Lay Preacher at Newstead Uniting Church
- Member of the Lions Club
- Editorial Committee with Newstead Historical Society
- General member of the RSL
- Active Firefighter for 20



years

- Community engagement with the local CFA
- Mentor at Nalderun
- Conducting walking tours of Maldon and Newstead
- Day walks and storytelling at the Blue Light Youth Camp

“Always remember that a good walk restores balance, gives you clarity of mind. Connects with country. Keeps your feet on the ground.”

In what seems an unending list of contributions to the community, Ray

is also an ardent campaigner against family violence and has been actively involved as a Respect Ambassador.

“Family violence has a massive impact on children and families and the community needs to have a greater awareness.”

Ray’s knowledge and passion for so many wonderful groups, communities and causes is truly inspiring.

“I’m a great believer in giving the best you can and having a go. If you’re willing to have a go, give it all you’ve got.”

COVID-19 screening and vaccinations in Castlemaine

CASTLEMAINE Health and CHIRP Community Health are working together to deliver COVID-19 testing for the local community.

Drive-through COVID-19 screening clinics are located at CHIRP Community Health 13 Mostyn St., Castlemaine.

The clinic is open every Tuesday 10.30-11.30am.

If you have symptoms and require a test please call 5479 1000 to make an appointment.

Alternatively, the Department of Health and Human Services website lists other testing clinics.

New hours of operation for local COVID-19 vaccination clinic

Castlemaine Health’s COVID-19 vaccination clinic is open to the general public. Bookings are preferred, but limited walk-in



appointments are also available depending on vaccine availability.

The clinic is providing AstraZeneca vaccine to all adults aged 50 years and over. Bring your Medicare card and photo identification.

Clinic hours

The Castlemaine Health COVID-19 vaccination clinic is open Monday, Wednesday and Friday 9

am-1pm. Last vaccinations are at 12.45pm.

Eligibility
Check the government’s eligibility calculator covid-vaccine.healthdirect.gov.au/eligibility to know which phase you are in. Eligibility phases have been determined by the Australian Government.

Address
The clinic is located in

the Castlemaine Health Auditorium. Access is via the Odgers Road entrance outside main reception. Disabled access is via the main entrance. Parking is available across the road from the main entrance. All visitors should check in on arrival at the screening booth.

Registration
Book in using the Loddon Mallee registration hub at castlemainehealth.org.au or call the State Government Coronavirus Hotline on 1800 675 398.

Timing
The AstraZeneca vaccine is delivered in two doses 12 weeks apart. The Australian Technical Advisory Group on Immunisation (ATAGI) has advised the AstraZeneca vaccine is safe for people aged 50 and over. Vaccination is free.

Letters to the Editor

Let’s have a real design choice

Oh dear! Here we go again. Yet another assault on the heritage values of Maldon with the proposed pedestrian crossing options. And yet another round of ‘pseudo-consultation’. Yes we are being given the opportunity to have a say but not about different designs; just the preferred material for an

already determined ‘design’.

No one would oppose the intention to provide a safer crossing for pedestrians. That’s a no brainer. It’s the solution that is wrong.

The widened timber crossings are great. But what happened to the option of delineating the crossings with the same type of white timber posts already in various locations around

town, for example, at the post office and the corner of Spring and High Streets? To our understanding, this option was put forward by one of the consultancy firms, after extensive community consultation, and yet has somehow dropped out of contention with no real explanation.

These white markers are readily visible, fit with the

existing Maldon streetscape, are inexpensive and could easily be added where necessary without detracting from the town’s heritage value.

Some people have commented that safety should take precedence over everything else. If this is the case why now introduce a design that sits well below normal sight lines and

Continued on page 10

Launch of Community Grants 2021 program



☆ Some of the Community Bank Maldon & District team including Branch Manager Adam Balzan, Chair Ross Egleton and EO Shannon Burdeu.

Continued from page 3

work. It's a great privilege that this grants program, where we expect to give over \$150,000 in grants, will be the catalyst for ideas that will have positive impact across our communities," said Ross.

Previous grant recipients recounted their experiences, encouraging groups to apply for funding to support their group and benefit the wider community.

Shannon Burdeu, Executive Officer with the Community Bank, spoke passionately about applicants considering the impact that funding from the Maldon & District Community Bank

will have on the broader community.

"We would really love to see projects and ideas that have been driven by the community. We want to be inspired by outcomes which make our local towns better places to live by connecting people, connecting places and just creating more vibrant communities," commented Shannon.

Shannon said that some organisations were not eligible to apply for this program but still encouraged smaller groups or groups without ABNs to still apply for grants. Local rural transaction centres (RTCs), neighbourhood and community houses can be contacted

by groups needing a project partner in the grants round or support to run a project.

Community groups from Maldon, Newstead, Dunolly, Harcourt and the broader Mount Alexander Shire are encouraged to apply for grant funding. Contact the bank's Shannon Burdeu (0478 435 110 or executiveofficer@mdcb.com.au) to discuss your group's proposed project prior to submitting an application. Otherwise pop in and discuss at the Maldon Branch or Dunolly and Newstead RTCs.

Applications are available online at www.bendigobank.com/foundation.

Balanced Whole with Karla

Baby on the way



EXCITING news from Karla, our local Naturopath, and her partner Maikel – they are expecting their first baby in July.

Karla will be taking time off from seeing clients for the time being, but hopes to reopen her business late 2021, or early 2022... depending on variables such as sleep!

Karla wishes to thank the local community for their support with her naturopathy business over the last 2.5 years; it's been a pleasure serving the community and contributing articles to the *Tarrangower Times*.

If you would like holistic health care support before Karla returns from maternity leave, there are some other fantastic naturopaths in the area. Contact Karla via email karla@balanced-whole.com.au before the end of June if you would like a recommendation.

Letters to the Editor

Continued from page 9

brings both a trip hazard and vehicle hazard, not to mention a litter trap. And, if we choose prioritising risk management over all else, then logically we should remove the children's playground in the park in case a child falls off and breaks a limb.

If COVID has taught us anything it is the need to balance competing and equally valid risks, rights and interests. Yes, we need to improve pedestrian safety and disabled access but surely we can do that without risking the unique heritage value of the town that brings tourists and fuels the local economy.

Unlike many small country towns, Maldon does not have to find a draw card, such as painted silos, to attract tourists. People come to Maldon because of the unique 'time capsule' Main Street and environs that still exist in a living, breathing, working town (as opposed to a Sovereign Hill). After all it was the intact Main Street, among other things, that earned Maldon its Notable Town status. Let's enhance not destroy the very thing that gives Maldon an economic edge over many other towns.

So many people, some now being painted as heritage wowsers, have put in so much work over the years to eventually get the power underground to preserve the streetscape. To now introduce these grave-like out-stands that have never been a feature of the Maldon landscape seems to defeat the purpose.

Preservation of heritage has been at the top of the list of importance at just about every community forum we have attended over the years. So why is it that these battles have to be fought over and over again? The now well-financed Streetscape

Project is a rare opportunity to enhance a whole range of features of Main Street, including safety and access, let's not stuff it up.

We will be submitting our form with the comment that none of the 'designs' offered are acceptable and asking the Shire to offer a genuine community consultation on the question of design not just material. Let the community decide between at least the two different designs proposed by the two consultant firms: the timber posts or some version thereof and the garden style out-stands. Otherwise we fear what the rest of the street 'beautification' is going to look like.

Neil & Deanna Buck
Residents
Maldon

So-called 'temporary' examples

It is with concern, alarm and indeed, even wonderment, we note that constructions previously unseen in historic Maldon have sprung into being in Main Street.

Council has now asked rate payers to choose a design from these so-called 'temporary' examples using a form left at several locations for 'voting' for their preferred option, and allowing for comments.

Nowhere on this form is the option given to reject the entire design concept.

As for the claim that the present examples are 'temporary', their construction presents a far from temporary appearance.

As ratepayers, we believe there is a significant cost involved just getting these 'temporary' constructions to the stage at which they are at present and would like to know at precisely what cost?

Were the results of community consultation made available to all and

were the present 'temporary' constructions contained anywhere within proposals that were finally put out to tender?

The four 'temporary' constructions which bear a striking resemblance to grave sites, effectively remove four car parking spaces from Main Street. These may be important parking places for elderly or people with a disability, as well as presenting significant tripping hazard; and for both residents and visitors, a parking hazard due to the low level at which they are installed.

While we concede there is a need to improve street crossing for the elderly and for those with a disability or mobility aid, there must be more suitable means of delineating these by use of more historic solutions such as hitching posts (as are already seen in Maldon), which are much more in keeping with the heritage aspects of Maldon and would uphold its status as Australia's first notable town.

We call on Council to immediately remove these unsightly constructions and, if necessary to re-assess the project to keep the design within what is appropriate for Maldon's historic streetscape.

There will doubtless be those who cry health and safety should take precedence.

However, with the wider timber cross overs in place where the 'temporary' constructions have been placed, these would surely improve access for those whose mobility may be effected, especially if car parks were slightly further away on both sides of the cross over to significantly improve visibility in both directions.

Debbie and Paul McDonald.
Maldon.

Continued on page 15.

REGIONS; BRING OUT YOUR BEST!

THE Community Achievement Awards for Regional Victoria have been launched for 2021 and the state-wide search has begun.

Every town has an inspiring individual, who we all wonder where they always find the time, a local business forever supporting its community while running the best business in town or a community group that is helping... well, everyone and everything.

Nominations are open across a broad range of categories, some of which include:

- Regional Development

- Victoria Business Achievement Award
- Regional Development Victoria Leadership and Innovation Award
- Ricoh Australia Customer Service Award
- GOTAFE Community Education Award
- Awards Australia Community Group Award
- Southside Plumbing, Heating and Cooling Community Hero Award

Category winners will receive \$2000 into an account in their name from Westpac, or a PRIME7 Television Package. One of

the category winners will be named the 'Westpac Regional Achiever of the Year' and will receive an additional \$2000 and state trophy.

All nominees will receive a letter of congratulations and a certificate of encouragement for their nomination.

To submit a nomination, simply go online to www.awardsaustralia.com/vicrca and select 'Nominate Now'.

Or call 9720 1638 or email vic@awardsaustralia.com.

Nominations close Friday 23 July.

TT Dine Out Directory

BERRYMAN'S CAFÉ & TEA ROOMS - MALDON

30 Main Street - 5475 2904
Open 7 days
Full menu is available to take away.
We also have some individual home-made frozen meals and we will soon be offering them in family size portions.

DIG CAFE - NEWSTEAD

13 Lyons Street - 5476 2744
Well known, well loved cafe with excellent food and coffee, fully licensed. Open 8.30am until 3.30pm each day and Friday nights for takeaway pizza from 5pm until 8pm. Bookings advisable at present on 5476 2744. www.digcafe.com.au

MALDON ROSE CAFE - MALDON

6 Main Street
(formerly Zen Cafe)
Everything baked on premise.
All Press coffee, Harney & Sons tea.
High teas available.
Open 10am - 4pm Saturday & Sunday.

MALDON TAKEAWAY - MALDON

10 Main Street - 0476 887 062
Open 11am-7ish every day.
Fish and Chips, burgers, hot dogs,
loaded fries, souvlakies, pizza, coffee
and happy to be here service.



BULL & MOUTH HOTEL - MARYBOROUGH

119 High Street - 5461 3636
Open for Breakfast, Lunch and afternoon tea
Sunday - Tuesday 9am - 5pm and
Breakfast, lunch, afternoon tea and dinner
Wednesday - Saturday 9am - 10pm.



GOLD EXCHANGE CAFE - MALDON

46 Main Street - 0439 368 077
Open 7 days
Limited dine-in and takeaway.
Monday-Friday from 6.45am-3pm and
Saturday and Sunday from 7.30am-3pm.

MALDON HOTEL - MALDON

58 Main Street - 5475 2231
OPENING HOURS
Monday & Tuesday: 4pm
Wednesday - Sunday: Midday
Lunch Specials: Wednesday - Friday
Meat Tray Raffle: Friday nights

NEW BOOTS CAFE - NEWSTEAD

16 Lyons Street - 0492 867 319
Great menu - excellent Allpress coffee
Golden North award winning ice-cream
Open Thursday - Sunday 8.30am - 4pm
Bookings advisable



CAFÉ MALDON - MALDON

52 Main Street - 5475 2022
Open 7 days.
Open for takeaways only
Monday-Friday from 7.15am-2pm and
Saturday and Sunday from 8am-3pm.
<https://order.hungryhungry.com/cafemaldon/menu>

KANGAROO HOTEL - MALDON

89 High Street - 5475 2214 - NEW MANAGEMENT
Bookings Advisable
Open Tues & Thurs 4pm - Close. Dinner only
Closed Mon. *Tight ass Tues evening - \$15 meals.
Wed, Fri, Sat & Sun 12pm - Close. Lunch & Dinner.
Takeaway - Fish & Chips or Parma Tues - Sun.

Le Sel DELI - MALDON

12 Main Street - 0417 329 776
Open for dine-in from Mon -Thurs from 9am-3pm
and Fri, Sat and Sun from 9am-5pm.
Sat night dinner bistro from 6.30pm to 10.30pm.
Takeaway breakfast, lunch & dinner also available.
Bookings are essential for the bistro.

RAILWAY HOTEL - CASTLEMAINE

65 Gingell Street - 5472 1250
Great food, both traditional pub food and gourmet.
Daily specials.
Open 7 days a week for dinner and lunch on
weekends. Phone : 5472 1250 for bookings.

Health & Fitness Directory



WINTER IS HERE - A GREAT TIME TO GET YOUR BIKE SERVICED

51 Templeton Street,
Castlemaine
Ph: 5470 6333

(Mention this ad and we will donate \$10 from the service fee to the
MALDON, MURRAY TO MOYNE cycling team, in support of the MALDON
HOSPITAL)



MALDON GOLF CLUB

GOLF LESSON – postponed until June - \$20 - all standards - clubs available
SOCIAL GOLF – 9.30am Monday and 8.30am Friday. Ring to check times -
9 holes, free for members or \$10 green fees

RECREATIONAL - exercise and dog walking memberships available.
Enq: maldongolf4u@gmail.com or Gay Reid 0413 013 766.



MALDON CROQUET CLUB

(Established 1925)

Francis Street Maldon

Social Croquet every Tuesday, Thursday and Saturday from 9.30am
and Tuesday evening from 7pm.

New players always welcome to come and give it a try. Equipment supplied.
Also open to young players, Working With Children certificated members to help with
learning and coaching available. Weekly green fees \$5.
Enquiries: Ray Austin 0448 338 251.



KEYSTONE PILATES

Keystone Pilates provides a safe friendly environment where people of all
ages and abilities can work on their strength, flexibility and balance.

CALL FOR A FREE ONLINE TRIAL

The Faulder Watson Hall, Barker Street, Castlemaine
Contact Lloyd 0421 329 895



MALDON FOOTBALL NETBALL CLUB

Committee 2019/2020

Executives:

President	Jamie Cox	0429 477 223
Vice President	Nick Kinross	0439 114 099
Secretary	Luke Cox	0438 058 665
Treasurer	Kyle Winstanley	0402 618 123
General committee members: Coby Cox, Simon Cox, Eddie Peaslee, Luke Dyer, Kirsten Cain, Georgia Spokes, Ross Eggleton, Steve Webb		



TREAD PODIATRY

Providing superior foot care to those in need.

· Foot & ankle pain · Orthotics · Children's feet · Wound care
· Nail surgery · Sporting injuries · Diabetic foot health
· Gait analysis · General footcare

255 Barker Street, Castlemaine. Ph: 5472 3295

Did you know?

DEADLINES

Deadlines for classifieds
Before 12 noon Tuesday
Births and deaths before 10.30am
Wednesday

LOST AND FOUND ADVERTISEMENTS

All Lost and Found advertisements are
published in the *Tarrangower Times* **FREE**.

FOR SALE - UNDER \$200

Any items For Sale under \$200 are published
in the *Tarrangower Times* **FREE**.
You can even include a photo.

Ph: 5475 2256 ~ 0404 357 556 ~ karen@tarrangowertimes.com.au



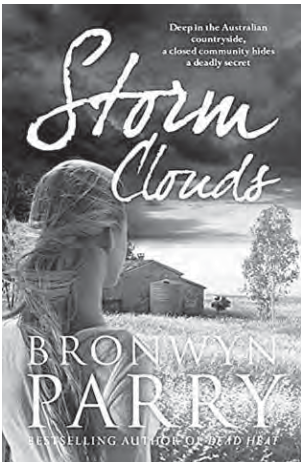
97 High Street, Maldon. Enqs Joy 5475 1326.
Every Mon, Wed & Friday 2-4pm. Saturday 9.30am - 12 noon.

More from the shelves

DUE to the COVID lockdown, the books and the audio book that I wrote about for last week's *Tarrangower Times* will not go into the Athenaeum Library until this Friday or whenever the lockdown is finished.

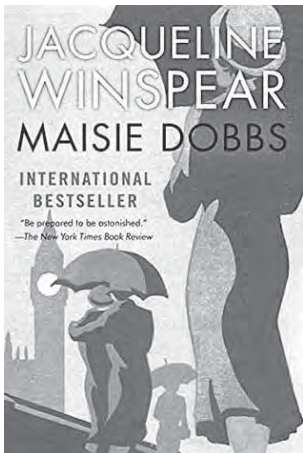
Rather than write about four other books, I've decided to choose some more of the great books already on our shelves; they come from a variety of genres.

Storm Clouds is written by Bronwyn Parry, another of our good current Australian writers. Bronwyn has a



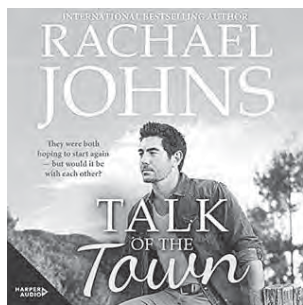
Ph.D. and this is reflected in her style and writing which are both serious,

yet very entertaining and well researched. This book is a mixture of a murder mystery, romance, an insight into the life and work of park rangers and a scary insight into a commune. It shows how an unscrupulous person can manipulate both young men and women for his own greed and self-aggrandisement. It is a book which will capture your interest and make you want to keep on reading to the end because it is exciting and fast moving.



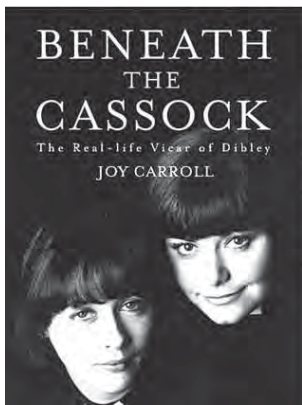
Maisie Dobbs is the first in the series of books about this entertaining and unusual young woman and the Athenaeum has two copies of this book, although it doesn't necessarily matter which order you read the books. The personal stories certainly follow a sequence as Maisie moves through the various events that influence her life. This first book is set

in 1929 and has much about Maisie's experiences as a nurse through WWI and its aftermath. There are many other titles in this series and I think that if you enjoy a gentle mystery and are also interested in life in the 1920s and 30s you really will enjoy these books. A few of the other titles are **The Mapping of Love and Death, Leaving Everything Most Loved, Birds of a Feather, In This Grave Hour, Journey to Munich, To Die But Once, Among The Mad & A Lesson In Secrets.** There are 15 titles in all.



Talk of the Town is by Rachael Johns, another Australian author who has written a number of books. There are three others in the Library so if you like this one you might like to follow on with the others. This is not the typical outback romance, although it certainly is a romantic tale. Megan moves from Victoria to a ghost town in Western Australia in an effort to forget her past and start a

new life. She is reluctant to make friends but gradually country life and the people overcome her fears and of course she meets a very nice man. Again this is different because he has a little son and his wife had died some years earlier. I don't want to give away too much about this book because part of the pleasure of reading it is the gradual unfolding of the story. It's light but enjoyable reading.



Beneath the Cassock is the story of the real-life Vicar of Dibley, Joy Carroll. The book has a foreword by Dawn French and tells how the famous series helped in the fight for the acceptance of women priests. Joy Carroll was one of the first Anglican women to be ordained and as well as being a pioneer in that way she has also led an unconventional life, making many question the traditional image of what it means to be a priest. You will find this book in the Biography section of the Athenaeum.

I hope I've whetted your appetite for looking through the shelves and maybe re-finding some of those books that you meant to read but haven't got around to yet. There really are some fascinating ones to be found there. Enjoy your reading.

Joy Leneaux-Gale.

MALDON BRIDGE CLUB RESULTS

SLICK CARD PLAY



fifth with 62 points.

Special mention must also be made of Jan Gower's and Sue Porter's wonderful result in the Castlemaine competition's Australia Wide Novice Pairs. Jan and Sue secured a brilliant first place result with steady sound defence and will gain Masters points for this effort. A number of other regular Maldon players also attended and added to the quality of the competition. Thanks to Graham Forbes and Ron Westcott for their smooth organisation and generous invitation.

Also, thank you to Jo for her seamless running of the day's play and Paul for helping with scoring, plus reading the results in his own inimitable style. Thanks to all club members who have stepped up of late and to the Maldon Hotel and their warm staff for always adapting to our table needs and providing a most indulgent chicken and chips afternoon tea.

PS: No Bridge this week due to lockdown.

Whatever your age group or skills, please feel free to join us to, 'dip your toe in the water' each Thursday from 12.45pm to 4.30pm or on Mondays 1.15pm to 4.30pm to help us in our endeavour to:

USE IT OR LOSE IT
Roger Shelton for
Judy McKnight

A neat field of 16 players eagerly gathered for Thursday Bridge, with no sit out table.

The Howell system was installed and 21 boards were played in quick succession.

All pairs came out of the gates fast, playing with good understanding and smooth running.

Ken and Sandy, Bob and Mark, and Jo and Roger were amongst the more fancied teams.

AND SO, IT CAME TO PASS...

Sandy and Ken, who have been in fine form, in the online Bendigo competition, streaked the field in first place with a formidable 82 points, followed by the experienced pairing of Bob and Mark on 73 points. This is Sandy's second win in a row, having paired with Mark for a win last week, Ken also scoring a second last week. They are 'our deadly duo' right now!

Jo and Roger were third with 69 points, followed by Jan Roberts and Mary with 63 points in fourth position. Jan Gower and Fred were

In Maldon Today



THERE'S been so much to talk about – a super blood moon in eclipse, an earthquake, a new TT editor, a controversial crossing on Main Street – and we have been squeezed off the airwaves by Lockdown #4.

Last week's near-guest was relieved, but she ain't off the hook just yet! And there will be no show today, as the uncertainty of an extended lockdown makes planning it

too last-minute difficult.

Watch this space. We may have to go silly in this column as we did last year! Get your sodding vaccination ASAP, please. Today's photo, Tony as DD in full flight.

To catch up on our previous programs click on <https://www.mixcloud.com/nancymay007/>.

See our ad on page 13.
Mike Smythe

10am - 4.30pm
weekdays
10am - 5pm
weekends

Open 7 Days

20 High St., Maldon
Ph: 5475 1136

www.themaldonlollyshop.com.au
Retailers and Wholesalers of Good Old Fashioned Confectionery; Gourmet Cordials and Delicious Chocolates

ROBERT COX MOTORS
HIGH STREET, MALDON, 3463

Robert Cox

SPECIALISING IN MECHANICAL REPAIRS
• Lubrication Service • Smash Repairs • Tyres
• Windscreen Replacement • Batteries • Parts
• Disc and Drum Brake Machining
• Wheel Alignments

*** LICENSED MOTOR VEHICLE TESTER ***
- 0173 -

TELEPHONE 03 5475 2381

Tarrangower Times Classifieds

karen@tarrangowertimes.com.au

Phone: 5475 2256

DEATHS

KANE - Gwenneth

Formerly of Maldon,
Gwen passed away
suddenly on 29th May
2021 in Melbourne.

Valued friend of Cheryl
and Tony Kane of
Maldon

A Lady at Peace

Heartfelt condolences to
Jim and family.



FUNERALS

YOGA & RELAXATION

Open your body, open
your mind
With gentle movements

Classes for women and
men of all ages and
abilities
Tuesday evenings
6-7.30pm
Maldon Neighbourhood
Centre
First class free

For inquiries and
bookings
Ph Andrea 0427 772 878
IYTA Trained & Accredited.

PUBLIC NOTICES

IMT - In Maldon Today Radio Program

Tune in to 94.9 MAINfm

Every Friday morning between 9am and 11am.

Tune into www.mainfm.net or the TuneIn Radio App.

Studio guests and latest news and gossip in 'Street Talk'

Suggestions and feedback: inmaldontoday@gmail.com

or Facebook (IMT - In Maldon Today Radio Program)

SMS comments during the show (0488 863 186)

and sign it so we can read it out on air

Listen later on <https://www.mixcloud.com/nancymay007/>

PHOTOGRAPHY

ROB LEESON

Photographer



Pets, People, Portraits

0400 100 075

www.robbleeson.com.au

Seen anything interesting?
Call the *Times* on: 5475 2256

PUBLIC NOTICES



Sunday 6 June 9am-1pm

Western Reserve, Forest Street

Stay safe | Be clean | Be kind

www.castlemainefarmersmarket.org

ph: 0455 332 692

MALDON GARDEN CLUB

Penny Woodward
Event July 17th
postponed until further
notice

Advertising deadline
12 noon Tuesday
Phone 0404 357 556

Chesters calls on Minister to ramp up vaccine rollout

"The Prime Minister has promised that 'ample supplies' of vaccines would be made available, however many people in our community are still being turned away from GP clinics due to a low supply," Ms Chesters said. "People in our community want to get vaccinated and want to help keep each other safe. By giving GPs the vaccine they need and getting pharmacies on board with distribution, we can normalise distribution and make access to the vaccines people need easier."

Pharmacy Guild of

Victoria Committee Member and Bendigo Community Pharmacist Kin Chong has demanded that the Commonwealth Government guarantees supply of the vaccine in regional areas so pharmacists across Victoria can play an important role in helping Victoria reach herd immunity.

"The Commonwealth Government has stated that there are no vaccine supply issues and if this is the case then there is no reason to delay pharmacy access to vaccines in regional areas," Mr Chong said.



MEMBER for Bendigo Lisa Chesters has written to the Minister for Health, Greg Hunt, calling on the Federal Government to ramp up the vaccine rollout.

Proudly
sponsored
by

Maldon Newsagency & Tattsлото



TATTS INSTANT SCRATCH-ITS

Scratchie sales have returned to Tatts.

Try your luck with Tatts Instant Scratch-Its (\$1-\$10) at Maldon Newsagency.

We are not just a paper/magazine Lotto shop.

Come and check out our range of ever changing products.

Open for your convenience from 5.30am daily.

Use us at your convenience.

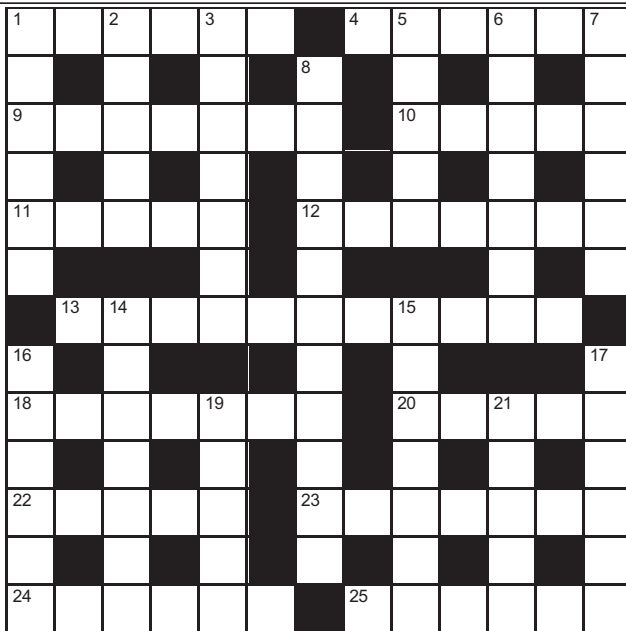
CROSSWORD Number 803

Across

- 1 Good sense
- 4 Confuse
- 9 Speaker's stand
- 10 Elegance
- 11 Choose by vote
- 12 Sunset
- 13 Brackets
- 18 Sack for sitting in
- 20 Lost colour
- 22 Command
- 23 Wood-eating insect
- 24 Rejected
- 25 Extreme

Down

- 1 Metal used in jewellery
- 2 Alcove
- 3 Operating room
- 5 Bicker
- 6 Easily broken
- 7 Come into view



Solution to No. 803



- 8 Scrutinise
- 14 Desert
- 15 Implement
- 16 Overseas
- 17 Stick
- 19 Flat-bottomed boat
- 21 Operate a vehicle

Rainfall Baringhup

Week Ending 1.6.21

0.6mm

Monthly Totals So Far:

Month	2021	2020	2019
Jan	92.9	44.6	3.2
Feb	8.9	56.3	12.6
Mar	72.3	32.8	4.3
Apr	9.8	99.6	4.5
May	42.0	49.2	100.8
June	0.0	38.3	75.2
July		23.5	35.3
Aug		48.7	45.7
Sept		40.9	19.1
Oct		47.1	4.9
Nov		25.7	38.6
Dec		29.1	3.9
TOTAL	225.9	535.8	348.1

Rainfall Maldon

Week Ending 1.6.21

0.0mm

Monthly Totals So Far:

Month	2021	2020	2019
Jan	83.4	35.2	4.8
Feb	17.0	52.8	21.6
Mar	83.8	37.0	7.6
Apr	14.4	145.4	5.6
May	53.6	66.2	115.5
June	0.0	49.2	92.2
July		32.8	53.6
Aug		62.2	57.6
Sept		54.6	29.4
Oct		73.2	8.6
Nov		37.2	43.0
Dec		39.2	9.8
TOTAL	252.2	685.0	449.4

Rainfall Newstead

Week Ending 1.6.21

0.0mm

Monthly Totals So Far:

Month	2021	2020	2019
Jan	101.6	53.6	5.0
Feb	13.6	38.0	18.2
Mar	67.2	35.8	6.2
Apr	11.4	107.6	5.0
May	53.2	56.2	113.6
June	0.0	46.6	82.8
July		29.4	43.0
Aug		69.6	51.6
Sept		46.8	31.2
Oct		56.2	9.8
Nov		22.8	42.0
Dec		31.2	8.4
TOTAL	246.4	593.8	416.8

Water Storage Capacity as at 1.6.21

Site	Cairn Curran	Max ML	147,130	Current ML	55,062	% Full	37.42
Site	Malmsbury	Max ML	12,034	Current ML	2,663	% Full	22.1



The Book Wolf

Lockdown: a great time to
catch up on reading

0487 193 223

1/26 High Street

ARBORIST


Arborea
Tree Management
Consulting Arborist
Contract Climber • Tree Pruning & Removals • Cable Bracing & Risk Assessment • Mulching & Stump Grinding • Tree Maintenance & Protection • All Tree Works
Fully insured
Reubin Williams
0439 326 113

BUILDING DESIGNER

BUILDING DESIGNER
Maldon Based

*Home Design
Planning Applications
BAL Assessment
Project Management*
0402532082
eric@s3design.eco

CABINET MAKER

CABINET MAKING & INTERIORS
Custom-made fitted and free-standing furniture
Kitchens, kitchen renovations, wardrobes, vanities, bookcases etc.
Repairs and restorations
No job too small
Martin Waddington
Ph: 0423 405 863
Email: mwaddington70@gmail.com

CABINET MAKER

JOINERY & HANDYMAN
All Woodwork Jobs
Interior & Exterior.
Maldon and surrounds.
No job too small.
Free quotes.
Nick Pierce
Ph. 0491 115 459

CARPENTER


Local Registered Builder.
Renovations and New Builds.

CONCRETER

CONCRETER
PAT COLLINS
PATHS, SHEDS, FLOORS, DRIVEWAYS, PATTERN, COLOUR
PAVING ALSO BRICK PAVING
Shelbourne Road
Maldon
Ph. (03) 5475 1080

DRESSMAKER

DRESSMAKER / TAILORESS
Alterations & repairs.
Experienced and reliable.
Maldon based.
Very reasonable rates.
Phone: 5475 2952
or 0448 510 103.

ELECTRICAL

Cainpower
Bernie Cain
Your Trusted Local
Electrical Contractor
Rec 8335
Maldon & Surrounds
0417 526 308

ELECTRICAL


Servicing Goldfields Area
All jobs big or small
Call Simon on
0408 314 662
sgs.sparky@gmail.com
Rec 19673

ELECTRICAL

Ian Cain Electrical
Rec No 13585

Domestic, industrial, commercial, farming,
emergency call out on request
Carisbrook
Phone/Fax 5464 1402
Mobile 0418 388 226
ices@westnet.com.au

FLOORING

TRUE BLUE FLOORS
• Sanding & Polishing Specialists
• New & Old Floors
• Free Quotes
For Quality Workmanship
Ph: RIC LANG
0417 110 922
MALDON

FRAMEMAKER

MOLLYPENNY
UNIQUE, TRADITIONAL & GALLERY STYLE
FRAMEMAKER
• FOR ARTWORKS ON ALL MEDIA, ANY SIZE
• BOXWORK FOR MEDALS & EPHEMERA
• CANVAS STRETCHING
• MIRRORS • REPAIRWORK
BY APPOINTMENT:
0412 194 760
mollypenny1@gmail.com

HAIR DRESSER

Debbie's Salon
Mens & Ladies
HAIRDRESSER

for all your Hair Care
Closed Tuesdays
Sat. mornings by appt.
27 Harker St., Maldon
Ph: 5475 2400

JP

Justice of the Peace (JP)
Local JP Margaret McKnight can be available for witnessing documents at the Community Centre by appointment.
Contact: 5475 2440 or 0439 752 465.

PAINTING


Interior & Exterior
Residential & Commercial
New/Old houses
Staining
Roofs
Over 15 years experience
Free Quotes
Ph: Daniel
0400 090 480

PAINTING

INTERIOR REPAINT SPECIALIST
Alan Chapman
"Not just a Painter"
wallpaper stripping
plaster repairs and more...
No job too small
0423 475 431
Maldon

PAINTING

Jim's Painting

0458 374 579

PAINTING

Malcolm Stone Painting Services
Maldon & Surrounds
Over 40 years Experience

All types of painting Interior - Exterior - Inc. Heritage
Please call Mal on
0400 417 417
Maldon

PET CARE


Maldon Vet Clinic
Opening hours:
Tues – Fri 9am - 5pm
Ph 54 751 751
Fear-free consultations and home visits available

48 Hornsby Street
Maldon
Emergencies
0492 805 480

PET CARE


Mutz Kutz
All your pet grooming needs
Pet & stock feed + accessories
Bookings Essential
5475 1212
57-59 Main Street
Maldon

PLASTERING

Maldon Plastering Services
Heritage restoration, new homes, extensions and renovations.
No job too small.
Phone Richard Port
0412 397 404

PLUMBER

Steve Kile
Licensed Plumber & Gasfitter
VBA Lic No 28819
Ph. 0409 638 966
All your plumbing, gasfitting, roofing & drainage needs at competitive prices.
Free quotes/estimates,
32 yrs experience
stephenkile@outlook.com

STOCK FEED

Stock Feed and Pet Food
Brands incl: Black Hawk, CopRice, Cobber and Barastoc Poultry Feed & Wild Bird Seed.

FREE LOCAL DELIVERY
Open 7 days a week
14 High St, Maldon.
Ph: 5475 1018
S P MACHINERY



The Tarrangower Times is bound by the Standards of Practice of the Australian Press Council. If you believe the Standards may have been breached, you may approach the newspaper itself or contact the Council by email (info@-presscouncil.org.au) or by phone ([02] 92611930). For further information see <http://www.presscouncil.org.au>.



4.1 million Australians read *community newspapers* in print.

emma™ 12 months to February 2017. Readership based on last four weeks. Survey conducted by Ipsos MediaCT, people 14+ ; Nielsen DRM February 2017, People 14+ only.

TENNIS COACHING IN MALDON



☆ Aaron Vissers loves the look kids get when they master a new skill.



☆ Leon and Hayden love coming to tennis.

Continued from page 16

His youngest student is three and his oldest is in his 70s.

“There’s nothing I don’t

like about coaching,” he said. “Everyone is different, so I use a different approach for each person.”

As well as coaching lessons for children and adults at

Maldon, he also runs a cardio tennis program for adults on Thursday nights.

“They run around getting fit to music, while having fun,” he said. “Maldon

Tennis Club is always keen to take on new members.”

For enquiries contact the Maldon Tennis Club on Facebook or call 0422 419 922.

Letters to the Editor



☆ Four posts, two rails.

Out-stand Survey

Re the survey on the matter of the kerb out-stands on either side of the new pedestrian ‘crossing’ over Main Street currently being foisted on Maldon by the Council.

The survey form is poorly designed (like the crossing) in that there is no option given to say NO to this crossing. They are tossing us a bone, where we can choose what material the crossing

will be constructed with, but have no say in whether it stays, or in a more suitable form. Council’s already decided that.

There are several examples around town of wooden post-and-rail guards around cross-overs and gutters. These two are on Main Street/Reef Street near the Beehive Chimney. They are superior in every way to the four gravesites that now embarrass our shopping strip. They are clearly visible



☆ Two posts.

to drivers, they are high enough that they are easy to see when reversing into an adjacent parking spot, and they provide something to hang on to if a pedestrian should stumble. Or there is the even more minimal two post option, see above. Either design would reduce the amount of parking space taken up by the currently proposed design. And they fit, heritage-wise, with what the town already has. One can only assume that the

Council wants to spend a whole lot of money, and post-and-rail constructions wouldn’t cost enough.

Again I urge concerned residents to contact the Council in writing (email or letter). If you haven’t already put in a comment form (available from the Newsagency), maybe make a mention of the post-and-rail option, in the margin.

Lauren Williams, Maldon



☆ Ollie takes a swing.

MALDON GOLF CLUB



THERE was no golf last Saturday due to the mandated COVID-19 Restrictions. Members were disappointed, given the great conditions of the course, but it was necessary and in a good cause.

Advice to members of one of our season’s most enjoyable golfing events - the annual Frank Fitzpatrick Memorial Golf Day and the visit to Maldon of 20 to 30 family and friends for a weekend of golf and friendship, which includes a 9-hole event for social golfers.

**SATURDAY JUNE 12 - STABLEFORD EVENT
12noon HIT-OFF - 11.30am BBQ SAUSAGES**

**GOLF TOMORROW
Subject to lifting of COVID-19 Restrictions**

**JUNE MONTHLY MEDAL and COUNT-PUTTS
REGISTRATION 12.15pm - HIT-OFF 12.30pm**

**SUNDAY
Junior Golf Clinic
ALL WELCOME
10am-11am
Golf Clubs available.**

Bob Briggs

We’re on the lookout for Outstanding Regional Victorians

The Community Achievement Awards highlight and reward the contributions that individuals, groups, organisations and businesses make towards building stronger local communities and a vibrant state. **We’re looking for Victorians in these categories:**

REGIONAL DEVELOPMENT VICTORIA

Regional Development Victoria
Business Achievement Award

gotafe

GOTAFE
Community Education Award

AWARDS AUSTRALIA

Awards Australia
Community Group Award

REGIONAL DEVELOPMENT VICTORIA

Regional Development Victoria
Leadership and Innovation Award

RICOH
imagine. change.

Ricoh Australia
Customer Service Award

southside plumbing

Southside Plumbing,
Heating and Cooling
Community Hero Award

SUBMIT YOUR NOMINATION: www.awardsaustralia.com/viccaa

AWARD PARTNERS:



COMMUNITY
ACHIEVEMENT AWARDS
Celebrating Regional Communities

NOMINATIONS CLOSE FRIDAY 23 JULY 2021.

The Community Achievement Awards for Regional Victoria are proudly owned and operated by Awards Australia. For more information visit www.awardsaustralia.com/viccaa



facebook.com/CommunityAchievementAwardsVIC



vic@awardsaustralia.com



Times Stories

Your Paper, Your Stories, Your News, Your Sport!

www.facebook.com/TarrangowerTimes



UNDER 11s NETBALL



☆ Rebecca Buchannan - netball coach.



☆ Grace and Alice at under 11s netball warmups.

BECCA BUCHANNAN has been coaching netball in Maldon for 10 years and playing for 35.

"I got into it because my mum played and I loved watching her," she said. "I enjoy the rivalry with other teams, makes it fun."

Bec, who has been working in childcare for the past 22 years, is a dedicated coach who encourages the children to

have fun and do their best.

"The under 11s have only been playing for three years, there was no team before that, so I advocated to get it up and running."

The under 11s team now has 14 players, which is the equivalent of two teams. Bec makes sure that each player gets half a game by rotating the players.

"I love watching them grow. Their enthusiasm is infectious."

Unfortunately the team had to postpone a special Netfit Netball run by elite netballer Sarah Wall that was due to run on Thursday afternoon in order to allow people time to prepare for the lockdown.

"We'll be straight back at it as soon as the lockdown ends."

TENNIS COACHING IN MALDON



☆ Nash collects the most balls after practice.



☆ Jack perfects his swing.

COACH Aaron Vissers has been working with Jim Wid Tennis as a coach for the past four years.

He particularly enjoys

watching the grin kids get when they master a new skill and says it's a similar experience with the adults.

Continued on page 15

MALDON PÉTANQUE CLUB



AND THE WINNER IS COVID

OUR inaugural Open Tournament was organised for Saturday, 28 May, with 48 players registered from various parts of Victoria.

Our Tournament organiser, Bev Forsyth and her committee had spent many hours and a lot of effort to put the event together. There was great excitement within the Club especially from the

six club members who were to play.

The Tournament was also going to be the unveiling of the 'FORSTER CUP', named in honour of the commitment of George, Janet and Susan Forster.

All was well until last Thursday's lockdown announcement, which meant we had to cancel, a big disappointment for the club and participants alike. It was also very disappointing for our generous sponsors: Maldon Community Bank, Chaperon Wines, Maldon Getaways and others who offered assistance.

A further upset was that we had to cancel our regular fortnightly games last Sunday. Our next games will be on Sunday, 13 June at the St Brigid's pistes starting at the winter time of 1.30pm.

Geoff McLennan

• ALAN
• CHERYL
• STEVE

LANG

CARTAGE & DRAINAGE CONTRACTORS

House Sites - Driveways - Postholes
General Trenching & Excavations
Septic Tank Installations
Sand - Soil - Gravel
(Own supply of Muckleford Gravel)



licensed drainer no: 39620

Ph: 5475 2218 0438 560 128

CASTLEMAINE FINANCIAL SERVICES

- Accounting & Taxation
- Business Services
- Financial Planning
- SMSF Advice

12 Mostyn Street, Castlemaine. Phone: 5470 6100



BRACKEN LAWYERS

A boutique legal practice specialising in:

- Conveyancing • Property Law
- Commercial Leases • Guarantee and Loan advice
- Business Sale and Purchases

Based in 'The Hub' 3/233 Barker Street, Castlemaine and servicing Maldon by appointment.

Phone 5470 5062 or email ian@brackenlawyers.com

www.brackenlawyers.com